



PROJECT: _____
 ITEM # _____ QTY: _____
 MODEL # _____
 AIA # _____ SIS # _____

UNDERCOUNTER FREEZER WITH DRAWERS

UNDERCOUNTER REFRIGERATOR WITH DRAWERS

VURD119HC-6



CABINET CONSTRUCTION

- Stainless Steel Exterior (galvanized back and bottom)
- Aluminum Interior
- Stainless Steel 20 Gauge Door/Drawers
- One Piece, Snap-In Magnetic Door/Drawer Gaskets
- 6" Casters Two With Brakes
- 8' Cord And Plug (see electrical data for details)

FEATURES

- Full Electronic Control
- Stay-Open Door Feature For Easy Product Loading
- Heavy-Duty Spring Loaded Cartridge Hinges
- Heavy-Duty Pan Supports Provided
- Drawers Accommodate 6" Deep Full Size Food Service Pans In Both Upper And Lower Drawers (pans not included)
- Telescoping Drawer Slides With Locking Mechanism
- Low Profile Horizontal Door/Drawer Handles
- Epoxy Coated Shelves (2 per section)

REFRIGERATION

- Refrigeration System Uses R-290 Refrigerant To Comply With All Environmental Concerns
- Side Mounted Refrigeration System
- Adaptive Defrost For Reduced Energy Consumption And More Consistent Product Temperatures
- Epoxy Coated Evaporator Coil
- Refrigerator Capable Of Maintaining Product Temperature 36°F To 38°F

- ▶ **3 Year Parts & Labor Warranty**
Plus An Additional 4 Year Compressor Warranty
- ▶ **Exclusive 2 Year Warranty On Magnetic Door/Drawer Gaskets**
- ▶ **Lifetime Warranty On Handles & Hinges (parts only)**



Please verify qualifying units by visiting:
www.energystar.gov/cfs

OPTIONS & ACCESSORIES

- Stainless Steel Interior
- Stainless Steel Back
- Secure-Temp™ Technology
- Door/Drawer Locks
- Cutting Board
- Additional Shelves
- Shelf Clips (set of 4)
- Door Swing Orientation (at time of order)
- 6" Legs Or 6" Seismic Legs
- Casters: 3", Roller Kit, Low Profile
- Correctional Package
- Remote Models* (6" legs only)
(refrigerant must be specified at time of order, see note on back on page)

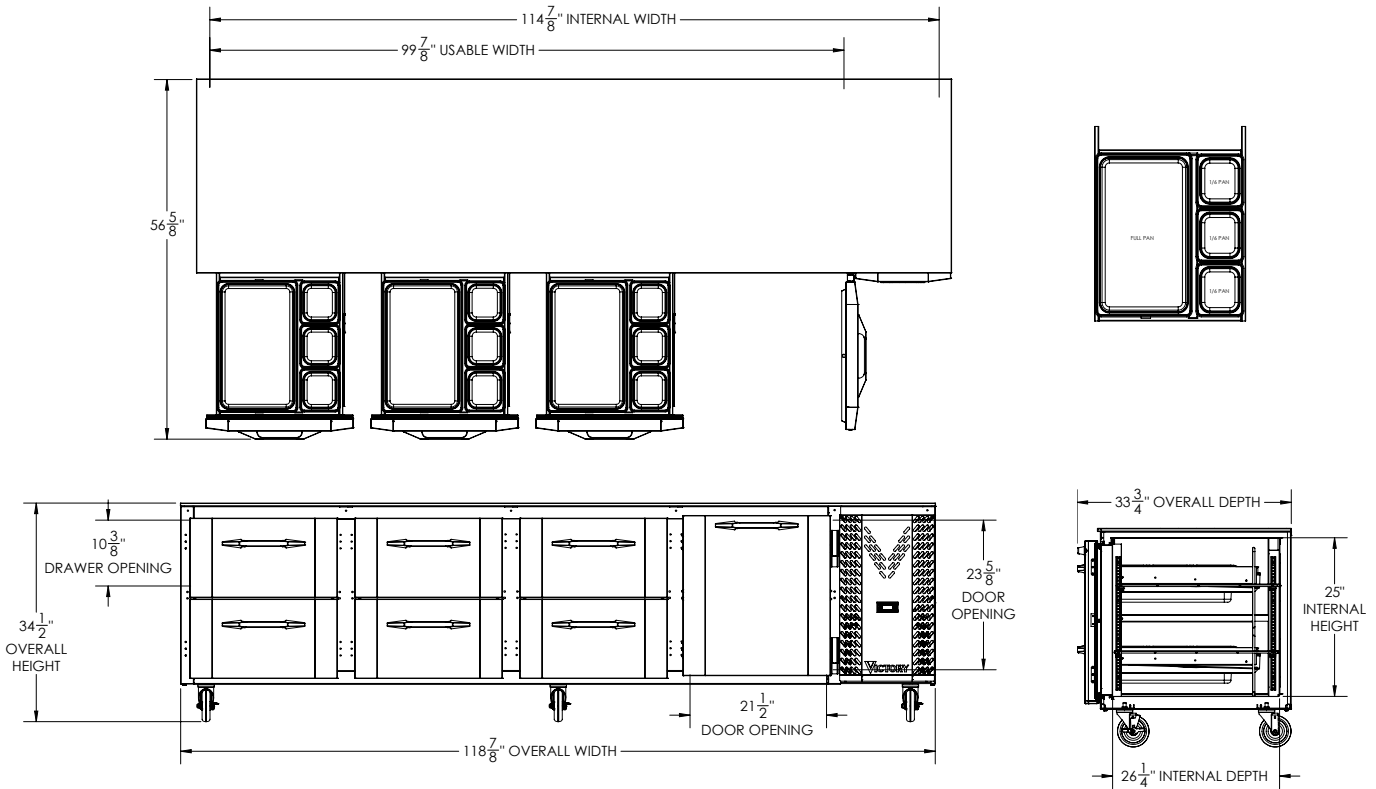
3779 Champion Blvd, Winston-Salem, NC 27105

ph: (888) 845-9800 | fax: (800) 253-5168

Sales@VictoryRefrigeration.com | VictoryRefrigeration.com

Rev. 11/3/21 Printed in U.S.A.

APPROVAL: _____ DATE: _____



We reserve the right to change specifications and product design without notice. Such revisions do not entitle the buyer to corresponding changes, improvements, additions or replacements for previously purchased equipment. Dimensional tolerances +/- 1/4". Metric dimensions (MM)

CHARACTERISTICS		ELECTRICAL DATA		SHIPPING DETAILS	
Net Capacity (cubic ft.)	40.12	Cabinet Voltage	115/60/1	Height	38"
Width, Overall (in.)	118 7/8"	Total Amperes	5.0	Width	122"
Depth, Overall (with handle)	33 3/4"	NEMA Plug (8' cord)	5-15P	Depth	42"
Height Overall (6" casters)	34 1/2"	REFRIGERATION DATA		Crated Weight	639 lbs
Depth, Drawer Open 90°	56 5/8"	Condensing Unit Size, HP	1/3	*NOTE: Remote units are field wired and comes with 6" legs. Refrigerant must be specified at time of order.	
Door Opening (in.)	21 1/2" x 23 5/8"	Refrigerant*	R-290		
Drawer Openings (in.)	21 1/2" x 10 3/8"	Capacity (BTU/HR) (100°F/20°F)	2630		
No. Of Doors/Shelves/Drawers	1/2/6	Heat Rejection (BTU/HR)	3945		
		Charge (lbs/grams)	0.3086/140		

3779 Champion Blvd, Winston-Salem, NC 27105 | ph: (888) 845-9800 | fax: (800) 253-5168

Sales@VictoryRefrigeration.com | VictoryRefrigeration.com

Rev. 11/3/21 Printed in U.S.A.

an Ali Group Company



The Spirit of Excellence