

VICTORY[®]

ULTRASPEC

PROJECT: _____

ITEM # _____ QTY: _____

MODEL # _____

AIA # _____ SIS # _____

BLAST CHILLER/SHOCK ROLL-IN FREEZER

VBCF20-230P

BLAST CHILLER/SHOCK ROLL-IN FREEZER



CABINET CONSTRUCTION

- Stainless Steel Exterior And Interior
- Die-Formed Interior Floor Has Rounded Corners
- Central Drain For Easy Cleaning
- Anti-Condensation Perimeter Heating Around Door Opening
- Ergonomic Door Handle And Stainless Steel
- Snap In Place Magnetic Gaskets Self Closing Door With Hold Open Stop At 100°

FEATURES

- Soft And Hard, Timed Or Core Probe Blast Chilling
- Soft And Hard, Timed Or Core Probe Shock Freezing
- Automatic Recognition Of Core Probe
- Multi Point Sensor Temperature Display Button
- Core Probe Heater Button
- HACCP Alarm Display Button
- Pre-Cooling Cycle Button
- Adjustable Evaporator Fan Speed Button
- Timed Manual Defrost Button
- USB Data Recorder
- Infinity Mode Program With Adjustable Set Point
- Automatic Conservation Mode At End Of Cycle
- On Board Recipe Book With 68 Pre-Set Programs
- 99 Free Memory Positions For Custom Programs
- LCD Illuminated Temperature Display
- Real Time Clock
- One, High Precision Heated Multi Sensor Probe
- Maximum Interior Dimensions For Carts: 33.4"W x 26.3"D x 75.5"H

REFRIGERATION

- Refrigeration System Uses R404 Refrigerant
- Evaporator Fitted With A High Flow Rate Fan Insures Maximum Cooling Efficiency
- Indirect Air Flow Assures Highest Product Quality
- Manual Defrosting With Door Open On A Timed Cycle
- Blast Chilling (194°F to 37°F in 90 minutes) Or Shock Freezing (194°F to 0°F in 240 minutes) Cycles



- ▶ 3 Year Parts & Labor Warranty
- ▶ Plus An Additional 2 Year Compressor Warranty
- ▶ Exclusive 2 Year Warranty On Magnetic Door Gaskets

OPTIONS & ACCESSORIES

- UV Sterilization Lamp (must be added at time of order)
- Change Door Swing
- Single Sensor Probes (up to 4 possible)
- Rs 485 Connection For External Monitoring System



Please verify qualifying units by visiting:
www.energystar.gov/cfs

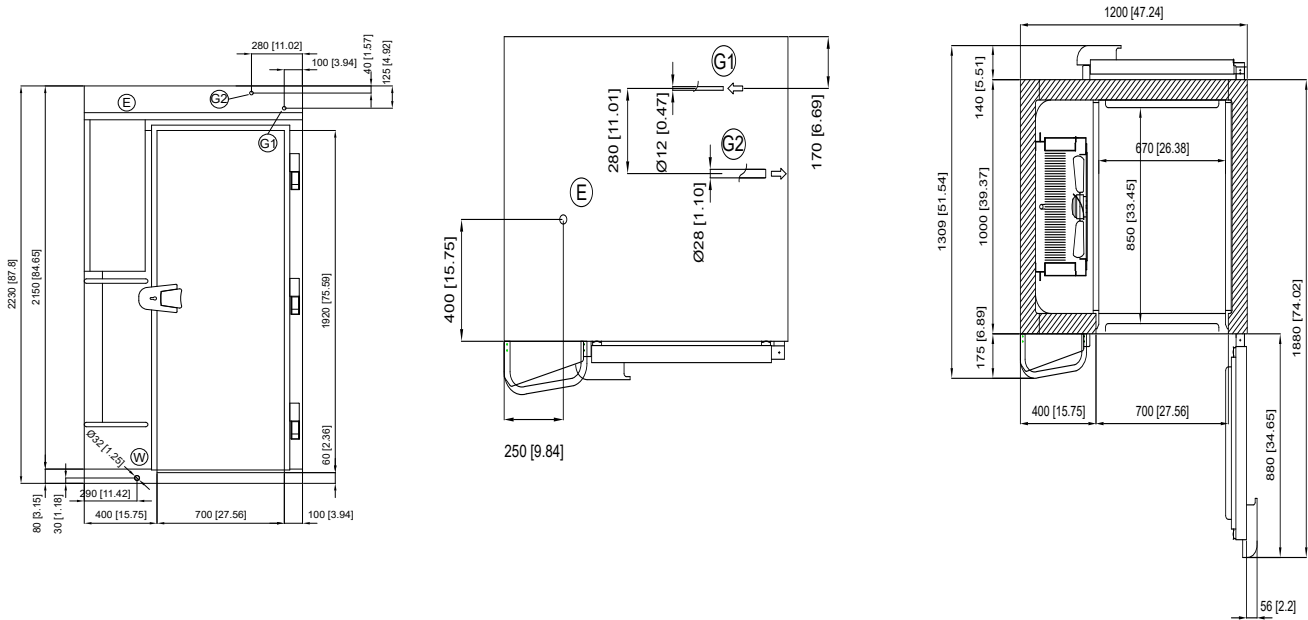
3779 Champion Blvd, Winston-Salem, NC 27105

ph: (888) 845-9800 | fax: (800) 253-5168

Sales@VictoryRefrigeration.com | VictoryRefrigeration.com

Rev. 8/17/21 Printed in U.S.A.

APPROVAL: _____ DATE: _____



We reserve the right to change specifications and product design without notice. Such revisions do not entitle the buyer to corresponding changes, improvements, additions or replacements for previously purchased equipment. Dimensional tolerances +/- 1/4". Metric dimensions (MM)

CHARACTERISTICS		REFRIGERATION DATA		SHIPPING DETAILS	
Width, Overall (in.)	47.24"	Condensing Unit Size, HP	N/A	Height	91"
Depth, Overall (with handle)	46.26"	Refrigerant	R404	Width	50"
Height Overall (in.)	87.80"	Capacity (BTU/HR) (113°F/14°F)	30,697	Depth	70"
Width, Door Open 90°	74.02"	PAN COUNT & PERFORMANCE		Crated Weight	976 lbs
Door Opening (in.)	27.56" x 75.59"	Sheet Pan Capacity (18"X26") Or Steam Table Pan Capacity (12"X20")	20		
Wall Thickness (in)	3.94"	Chilling Capacity In 90 Min	230 lbs		
Capacity Mobile Cart(s)	1 GN 1/1	Freezing Capacity In 240 Min	150 lbs		
ELECTRICAL DATA		Climate Class	5		
Cabinet Voltage	208-240/60/1				
Total Amperes	5.7				
NEMA Plug	N/A				

3779 Champion Blvd, Winston-Salem, NC 27105 | ph: (888) 845-9800 | fax: (800) 253-5168

Sales@VictoryRefrigeration.com | VictoryRefrigeration.com

Rev. 8/17/21 Printed in U.S.A.

an Ali Group Company



The Spirit of Excellence