



www.santos.fr



ICE CRUSHER #53



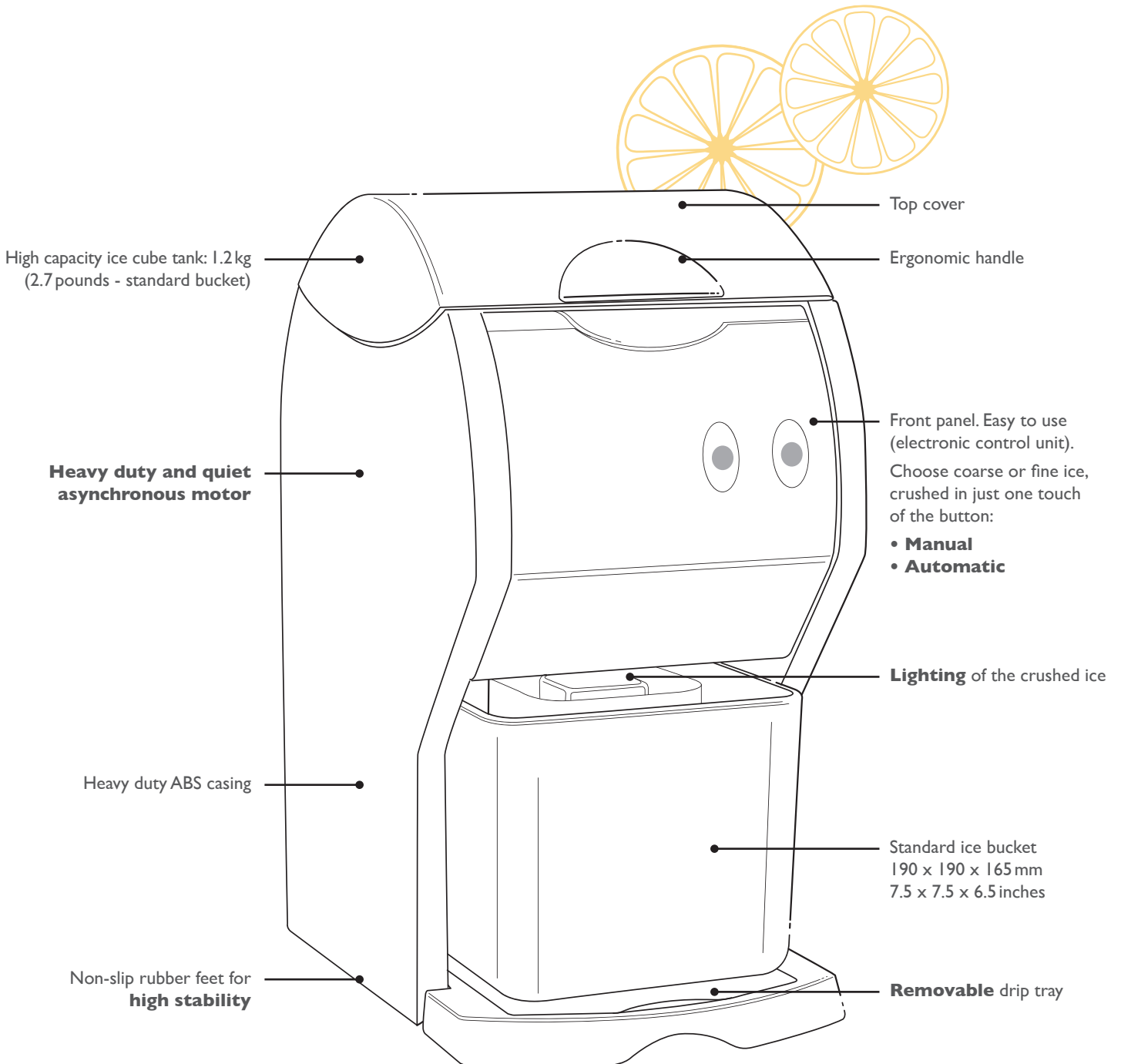
Internationally patented models





IDEAL FOR COCKTAILS, MOJITOS, MARGARITAS, DAIQUIRIS...

The ice crusher #53 is the ideal product **to make cocktails** (mojitos, frozen margaritas, daiquiris...) For use everywhere you need crushed ice: cocktail bars, hotels, restaurants, ice cream shops, bars and night clubs.



VIDEO

ICE CRUSCHER #53



EASY TO USE

www.santos.fr

Powerful, efficient and reliable

- Makes both **fine and coarse crushed ice** in just one touch of a button
- **Exceptional output:** simply and quickly makes 1.2kg of crushed ice in 30 seconds
- It is equipped with a heavy duty and quiet **asynchronous motor**
- It is adapted to **intensive use** and allows a **hands free use** thanks to its high capacity ice cube tank (1.2kg)

2 functioning modes:

- Long touch on the button: **manual function**
It crushes the ice as long as we push the button
- Quick touch on the button: **automatic function**
It automatically crushes the ice placed in the tank (hands-free use)

Instructions for use:

- Put the content of the ice bucket into the ice cube hopper
- Place the ice bucket on the drip tray
- Press the button corresponding to the size of crushed ice required (fine or coarse)



TECHNICAL SPECIFICATIONS



Motor

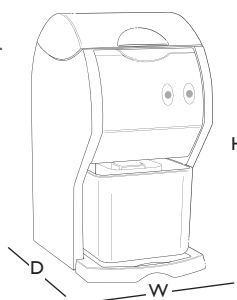
Single phase: 100 - 120V - 50/60Hz - 130W - CE - ETL
220 - 240V - 50/60Hz - 130W - CE

Speed: 73 rpm (50 Hz)
89 rpm (60 Hz)

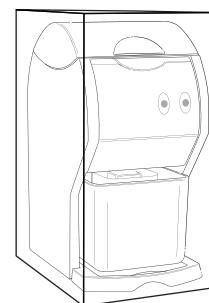


Weight

Net: 10 kg (22 lbs)
Shipping: 11 kg (24 lbs)



APPLIANCE
W: 236 mm (8")
D: 353 mm (14")
H: 474 mm (19")



SHIPPING BOX
W: 375 mm (14.7")
D: 415 mm (16.3")
H: 520 mm (20.5")

SAFETY, STANDARDS, HYGIENE

In accordance with the following regulations:

Machinery directive 2006/42/EC
Electromagnetic compatibility 2014/30/EU
RoHS directive 2011/65/EU
"Low voltage" directive 2014/35/EU
Regulation 1935/2004/EC (contact with food)

Harmonized European standards

EN ISO 12 100-1 and 2: 2004
EN 60204-1: 2006
EN 60335-2-64: 2004 Commercial electric kitchen machines

CE European standards
ETL Listed Mark (USA & Canada)

Thermal safety

Motor protected by internal thermal detector.

Electrical safety

Waterproof Electric Control Unit. Overload safety.
All mechanical parts are ground connected.
Appliances are 100 % tested after assembly.

Acoustic safety

The asynchronous motor is particularly silent.

Hygiene

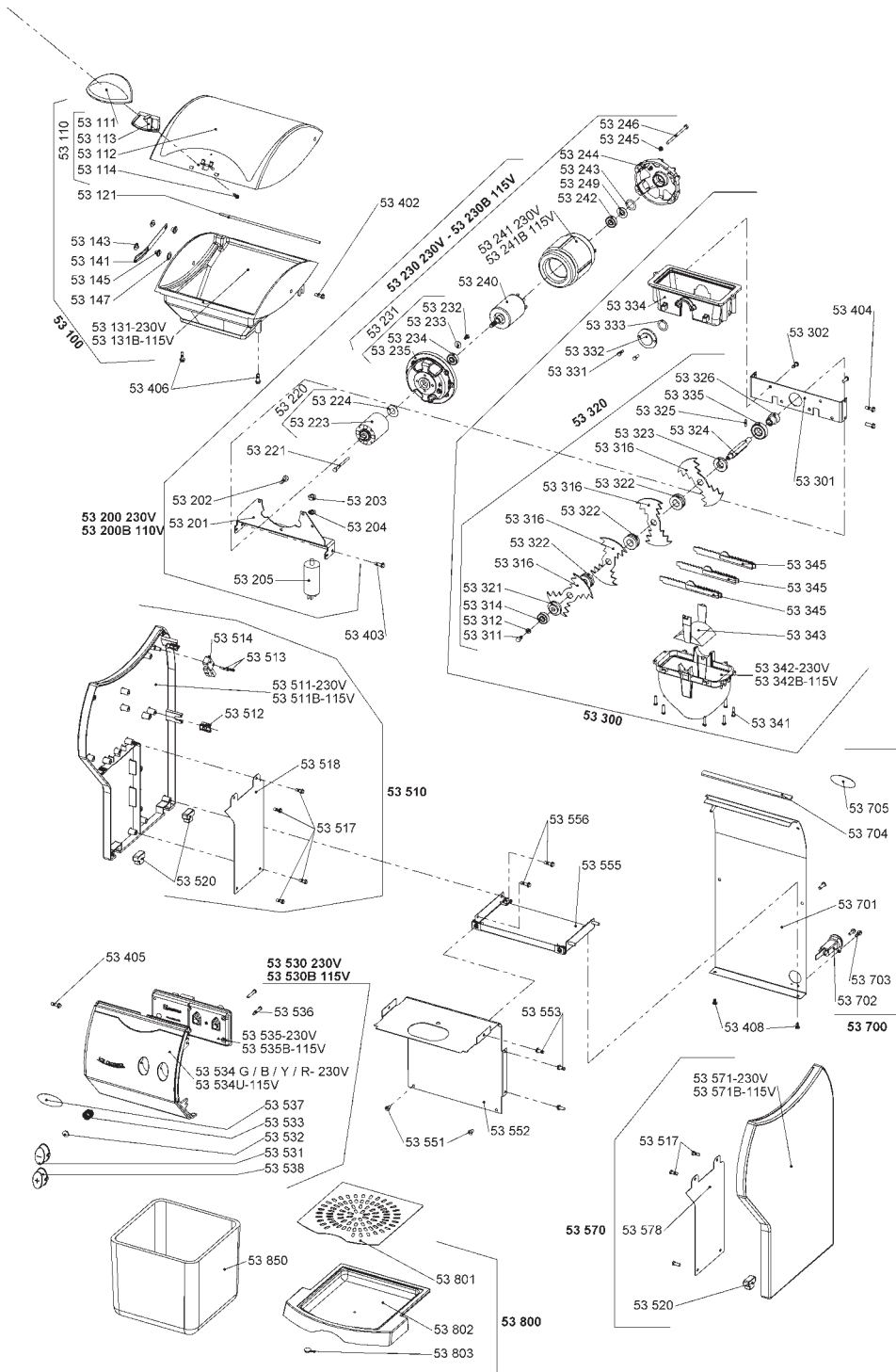
All removable parts can be put in a dishwasher or easily cleaned with hot soapy water.

PRODUCT: 2-YEAR WARRANTY | MOTOR: 5-YEAR WARRANTY

ICE CRUSHER #53



www.santos.fr



SANTOS

140-150, avenue Roger Salengro - 69120 VAULX-EN-VELIN (Lyon) - FRANCE - Tel. +33 472 37 35 29 – Fax +33 478 26 58 21

Website: www.santos.fr – E-mail: santos@santos.fr