

Non-Refrigerated Self-Service Case



MODEL SHOWN: CO37

- CO37
- CO47
- CO57
- CO67

Lengths include end panels
 36-1/4"L x 33"D x 79-3/4"H
 47-1/4"L x 33"D x 79-3/4"H
 59-1/4"L x 33"D x 79-3/4"H
 71-1/4"L x 33"D x 79-3/4"H

STANDARD FEATURES

- LED 3500K top light(s)
- One year parts & labor warranty
- Shelving removable and adjustable on 1" centers

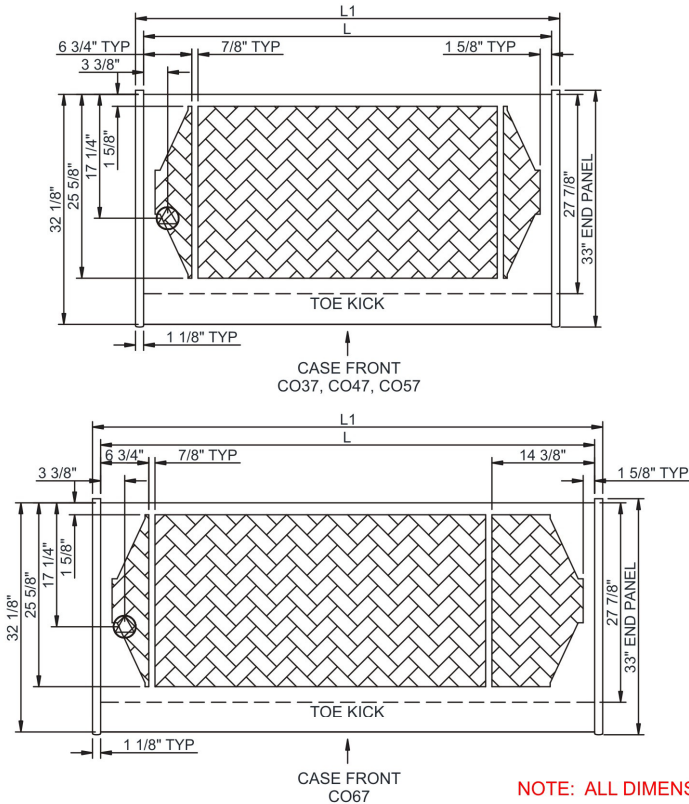
Features	Standard	Options
EXTERIOR COLOR	<input type="checkbox"/> Laminated (non-premium) Confirm pattern/grain direction	<input type="checkbox"/> Laminated (premium) Confirm pattern/grain direction <input type="checkbox"/> Stainless steel (includes lower front panel)
INTERIOR COLOR	<input type="checkbox"/> Black	<input type="checkbox"/> Stainless steel
LOWER FRONT PANEL COLOR	<input type="checkbox"/> Painted - Black	<input type="checkbox"/> Stainless steel (w/stainless ext. only)
BASE	<input type="checkbox"/> Casters w/ levelers	<input type="checkbox"/> Levelers (only) <input type="checkbox"/> Seismic levelers (Q4695)
END PANEL LEFT	<input type="checkbox"/> Full end panel w/mirror interior	<input type="checkbox"/> Cutaway end panel <input type="checkbox"/> No end panel (for same case to case connect)
END PANEL RIGHT	<input type="checkbox"/> Full end panel w/mirror interior	<input type="checkbox"/> Cutaway end panel <input type="checkbox"/> No end panel (for same case to case connect)
EXTERIOR BACK PANEL	<input type="checkbox"/> Solid back panel, black	<input type="checkbox"/> Solid back panel, stainless steel
SHELVING	<input type="checkbox"/> Metal shelves, non-lighted	<input type="checkbox"/> Metal shelves, lighted (LED 3500K)
ELECTRICAL CONNECT	<input type="checkbox"/> 6' Straight blade power cord	<input type="checkbox"/> 6' Locking blade power cord <input type="checkbox"/> Electrical leads (non-refrigerated)
MISCELLANEOUS		<input type="checkbox"/> Roll-down security cover, locking (Requires two end panels (full or cutaway) per case) <input type="checkbox"/> Second year parts & labor warranty
ACCESSORIES		<input type="checkbox"/> Price tag molding (matches interior color)

Oasis®

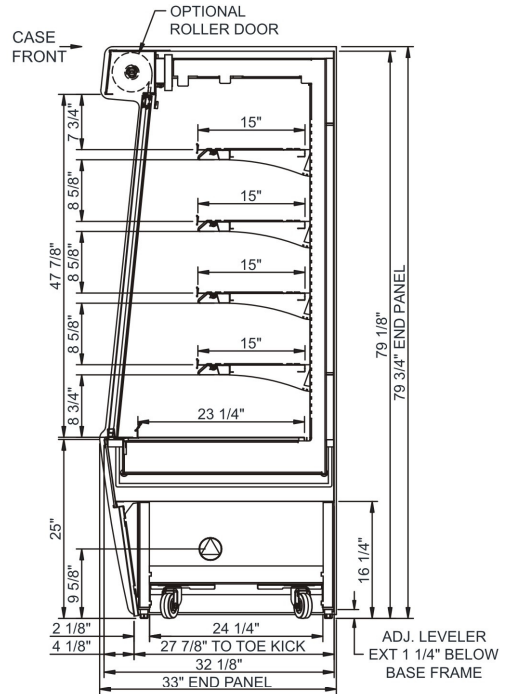
Product Specifications

Intended Environment: Type I - Designed to operate in ambient conditions of 75°F with 55% relative humidity unless noted otherwise in system information below.		
Zone	Intended Product To Be Displayed	Warmest Avg Prod Temp ° F
1	Packaged non-refrigerated products	Ambient

PLAN VIEW



SIDE VIEW



NOTE: ALL DIMENSIONS APPROXIMATE

- ELECTRICAL JUNCTION BOX** (SUPPLIED WITH 6\" LEADS OR POWER CORD).
- REFRIGERATION LINE CONNECTION.**
- SELF-CONTAINED CASE SERVICE ACCESS AREA.**
- LOCATION OF DRAIN TUBE FOR REMOTE REF. ONLY** (SUPPLIED WITH 3/4\" OR 1 1/2\" PVC TUBE).
- REMOTE FLOOR SINK & UTILITIES ACCESS AREA.**
- DRY CASE SERVICE ACCESS AREA.**

Model Technical Specifications																
Model	L"	L1"	L2"	System	Circuit	Volts	Phs	Freq	Amps ***	Watts	Wires	NEMA Plug	SST	Conv. Rack BTUH	Para. Rack BTUH	Est Wt
CO37	N/A	36.25	.00	Ambient/Lights	Circuit #1	110-120	1	60	0.81	85	2+G	5-15P	N/A	N/A	N/A	850
CO47	N/A	47.25	.00	Ambient/Lights	Circuit #1	110-120	1	60	1.17	150	2+G	5-15P	N/A	N/A	N/A	900
CO57	N/A	59.25	.00	Ambient/Lights	Circuit #1	110-120	1	60	1.52	192	2+G	5-15P	N/A	N/A	N/A	950
CO67	N/A	71.25	.00	Ambient/Lights	Circuit #1	110-120	1	60	2.07	240	2+G	5-15P	N/A	N/A	N/A	1,100

*** Does not include electric defrost on freezer models.

Important Notes:

- 1) **ELECTRICAL NOTE:** If GFCI is required, a GFCI breaker **MUST** be used in lieu of a GFCI receptacle
- ⚠ WARNING:** This product can expose you to chemicals, including Urethane (Ethyl Carbamate), which are known to the State of California to cause cancer and birth defects or other reproductive harm. For more information go to www.P65Warnings.ca.gov.

Regulatory Approvals:	
All Models	Accordance with AHRI Std 1200 ETL Listed to UL 471 ETL Listed to CAN/CSA 22.2 No. 120 ETL Sanitation to NSF 7

