

Combination Convertible Service Above Refrigerated Self-Service Case



NOTE: SHOWN W/ OPTIONAL SHELF IN LOWER DISPLAY



- ☐ NR3658RRSSV
- ☐ NR4858RRSSV
- ☐ NR6058RRSSV
- ☐ NR7258RRSSV

Lengths include end panels
35-3/4"L x 33"D x 57-1/2"H
47-3/4"L x 33"D x 57-1/2"H
59-3/4"L x 33"D x 57-1/2"H
71-3/4"L x 33"D x 57-1/2"H

STANDARD FEATURES

- NOTE: Glass warranty only applicable to first point of delivery
- Breeze~E (Type-II) w/ EnergyWise s/c refrigeration
- Blue Fin coated coil
- Clear glass shelf, lighted (LED 3500K) in upper display
- Compressor air intake from rear and out front panel at toe kick.
Front panel cannot be blocked.
- Condensate pan (self-contained refrig. only)
- Convertible baffle in upper display
- Fixed vertical glass
- Integrated average product temperature of 40°F or less
- LED top light
- One piece formed ABS plastic tub
- One year parts & labor; 5 year compressor warranty

Features	Standard	Options
FRAME EXTERIOR COLOR	<input type="checkbox"/> Black	<input type="checkbox"/> Painted (non-stock colors, specify RAL#) <input type="checkbox"/> Painted (stock colors, specify RAL#) <input type="checkbox"/> Stainless steel
INTERIOR COLOR	<input type="checkbox"/> Black	<input type="checkbox"/> NOTE: Interior color must be FDA & NSF approved <input type="checkbox"/> Painted (stock colors, specify RAL#) <input type="checkbox"/> Stainless steel
PANEL EXTERIOR	<input type="checkbox"/> Laminated (non-premium) Confirm pattern/grain direction	<input type="checkbox"/> Laminated (premium) Confirm pattern/grain direction <input type="checkbox"/> Stainless steel
BASE SUPPORT	<input type="checkbox"/> Adjustable, locking casters	<input type="checkbox"/> 6"H stainless steel legs <input type="checkbox"/> Shims (standard w/ remote)
LOWER FRONT PANEL	<input type="checkbox"/> Black	<input type="checkbox"/> Painted (stock colors, specify RAL#) <input type="checkbox"/> Stainless steel
LOWER REAR	<input type="checkbox"/> Solid back panel	<input type="checkbox"/> Clear glass rear sliding doors <input type="checkbox"/> Reflective glass rear sliding doors
LOWER REAR PANEL	<input type="checkbox"/> Black	<input type="checkbox"/> Painted (stock colors, specify RAL#) <input type="checkbox"/> Stainless steel
UPPER REAR	<input type="checkbox"/> Clear glass rear sliding doors	<input type="checkbox"/> Reflective glass rear sliding doors
LOWER DISPLAY	<input type="checkbox"/> None	<input type="checkbox"/> 2"H Full depth display riser(s) for lower display <input type="checkbox"/> 4"H Full depth display riser(s) for lower display <input type="checkbox"/> Clear glass shelf, lighted (LED)
LIGHTS	<input type="checkbox"/> LED 3500K w/ frosted lens	<input type="checkbox"/> LED 3000K w/ frosted lens <input type="checkbox"/> LED 4000K w/ frosted lens
ELECTRICAL CONNECT	<input type="checkbox"/> 6' Straight blade power cord (self-cont.)	<input type="checkbox"/> 6' Locking power cord (self-cont.) <input type="checkbox"/> Electrical leads (remote)
REFRIGERATION	<input type="checkbox"/> Breeze~E (Type-II) w/ EnergyWise s/c refrigeration (rear access)	<input type="checkbox"/> Breeze~E (Type-II) w/ EnergyWise s/c refrigeration (front access) <input type="checkbox"/> Remote w/thermostat, solenoid & TXV (front access) <input type="checkbox"/> Remote w/thermostat, solenoid & TXV (rear access)
MISCELLANEOUS		<input type="checkbox"/> Lower rear door lock <input type="checkbox"/> Rear wrapping board (n/a w/lower rear doors) <input type="checkbox"/> Second year parts & labor warranty (excludes compressor) <input type="checkbox"/> Upper rear door lock
ACCESSORIES		<input type="checkbox"/> Clean Sweep® coil cleaner (n/a w/remote) <input type="checkbox"/> Clear acrylic security cover, removable, locking <input type="checkbox"/> Night curtain, retractable, non-locking

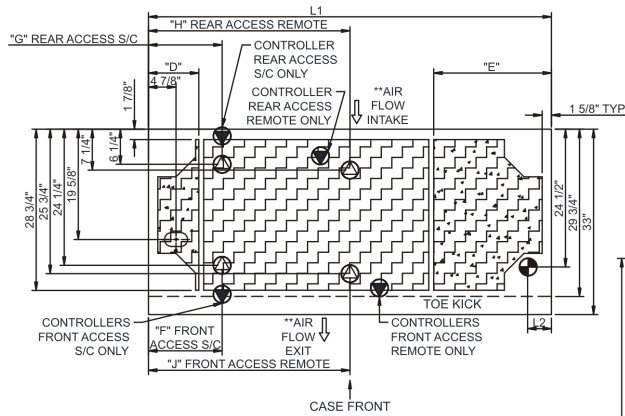
Reveal®

Product Specifications

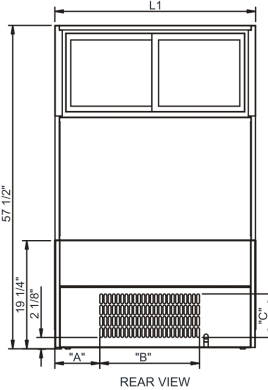
Intended Environment: Type II - Designed to operate in ambient conditions of 80°F and 60% relative humidity unless noted otherwise in system information below.

Zone	Intended Product To Be Displayed	Warmest Avg Prod Temp ° F
1	Packaged / unpackaged refrigerated products	40

PLAN VIEW

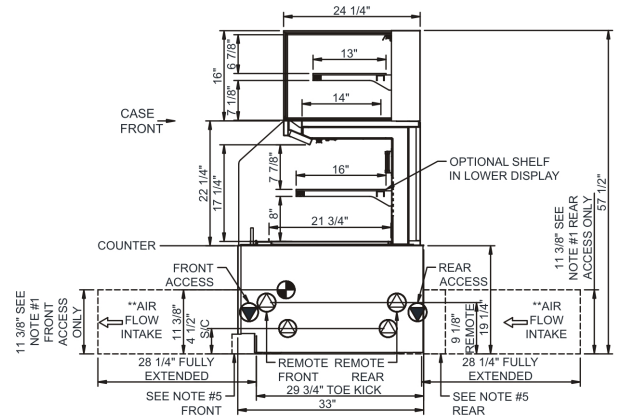


	"D"	"E"	"F"	"G"	"H"	"J"
NR3658RRSSV	N/A	N/A	7 1/8"	7 1/8"	17 7/8"	17 7/8"
NR4858RRSSV	N/A	N/A	13 1/8"	7 1/8"	23 7/8"	23 7/8"
NR6058RRSSV	9"	9"	13 1/8"	13 1/8"	29 7/8"	29 7/8"
NR7258RRSSV	9"	21"	13 1/8"	13 1/8"	35 7/8"	35 7/8"



	"A"	"B"	"C"
NR3658RRSSV	8"	17 3/4"	7 3/4"
NR4858RRSSV	7"	30 1/2"	7 3/4"
NR6058RRSSV	13"	30 1/2"	7 3/4"
NR7258RRSSV	25"	30 1/2"	7 3/4"

SIDE VIEW



- NOTES:**
- 11 3/8" TALL, FULL WIDTH OF CASE OPENING IN CABINET OR COUNTER IS REQUIRED TO PULL OUT REFRIGERATION SYSTEM.
 - BACK OF COUNTER / CABINET MUST BE VENTED PROPERLY FOR ADEQUATE AIRFLOW TO CONDENSER.
 - **REPRESENTS REAR PULLOUT REFRIGERATION. AIR FLOW INTAKE AND EXIT DETAILS ARE REVERSED WITH FRONT PULLOUT REFRIGERATION OPTION.
 - SELF-CONTAINED ACCESS ONLY BY PULLING OUT CONDENSER UNIT.
 - 4" OPEN AREA CLEARANCE REQUIRED FOR AIR FLOW FRONT AND REAR OF CASE.

NOTE: ALL DIMENSIONS APPROXIMATE

- ELECTRICAL JUNCTION BOX**
(SUPPLIED WITH 6" LEADS OR POWER CORD).
- LOCATION OF DRAIN TUBE FOR REMOTE REF.**
ONLY (SUPPLIED WITH 3/4" OR 1 1/2" PVC TUBE).

- REFRIGERATION LINE CONNECTION.**
- REMOTE FLOOR SINK & UTILITIES ACCESS AREA.**

- SELF-CONTAINED CASE SERVICE ACCESS AREA.**
- DRY CASE SERVICE ACCESS AREA.**

Model Technical Specifications																
Model	L"	L1"	L2"	System Circuit Volts			Phs	Freq	Amps ***	Watts	Wires	NEMA Plug	SST	Conv. Rack BTUH	Para. Rack BTUH	Est Wt
NR3658RRSSV	N/A	35.75	4.13	Remote(Type I)	Circuit #1	110-120	1	60	1.67	88	2+G	Leads Single	20.00	2376	2200	800
				Remote(Type I)	Circuit #1	110-120	1	60	1.67	88	2+G	Leads Single		2376	2200	
				Remote(Type II)	Circuit #1	110-120	1	60	1.67	88	2+G	Leads Single	20.00	2894	2680	
				Self-Contained	Circuit #1	110-120	1	60	16.00	1,221	2+G	5-20P or L5-20P	N/A	N/A	N/A	
NR4858RRSSV	N/A	47.75	4.13	Remote(Type I)	Circuit #1	110-120	1	60	1.74	104	2+G	Leads Single	20.00	3110	2880	1,000
				Remote(Type II)	Circuit #1	110-120	1	60	1.74	104	2+G	Leads Single	20.00	3802	3520	
				Self-Contained	Circuit #1	208-240	1	60	11.20	1,653	2+G	6-15P or L6-15P	N/A	N/A	N/A	
NR6058RRSSV	N/A	59.75	4.13	Remote(Type I)	Circuit #1	110-120	1	60	1.85	123	2+G	Leads Single	20.00	3888	3600	1,200
				Remote(Type II)	Circuit #1	110-120	1	60	1.85	123	2+G	Leads Single	20.00	4730	4380	
				Self-Contained	Circuit #1	208-240	1	60	12.00	1,925	2+G	6-15P or L6-15P	N/A	N/A	N/A	
NR7258RRSSV	N/A	71.75	4.13	Remote(Type I)	Circuit #1	110-120	1	60	1.92	137	2+G	Leads Single	20.00	4644	4300	1,300
				Remote(Type II)	Circuit #1	110-120	1	60	1.92	137	2+G	Leads Single	20.00	5659	5240	
				Self-Contained	Circuit #1	208-240	1	60	12.00	1,938	2+G	6-15P or L6-15P	N/A	N/A	N/A	

*** Does not include electric defrost on freezer models.

Regulatory Approvals:

All Models	<p>Accordance with AHRI Std 1200</p> <p>ETL Listed to UL 471</p> <p>ETL Listed to CAN/CSA 22.2 No. 120</p> <p>ETL Sanitation to NSF/ANSI 7</p>
------------	--



In Accordance with
AHRI Std 1200

DOE 2017
Energy Efficiency
Compliant

Important Notes:

- 1) ELECTRICAL NOTE: If GFCI is required, a GFCI breaker MUST be used in lieu of a GFCI receptacle.
- 2) Glass warranty only applicable to first point of delivery.

⚠ WARNING: This product can expose you to chemicals, including Urethane (Ethyl Carbamate), which are known to the State of California to cause cancer and birth defects or other reproductive harm. For more information go to www.P65Warnings.ca.gov.