

Refrigerated Self-Service Case



Conforms to NSF STD 7
TYPE II

- NR3655RSSV
- NR4855RSSV
- NR6055RSSV
- NR7255RSSV

Lengths include end panels
 35-3/4"L x 33"D x 54-5/8"H
 47-3/4"L x 33"D x 54-5/8"H
 59-3/4"L x 33"D x 54-5/8"H
 71-3/4"L x 33"D x 54-5/8"H

STANDARD FEATURES

- NOTE: Glass warranty only applicable to first point of delivery
- Breeze~E (Type-II) w/ EnergyWise s/c refrigeration
- (3) Levels of clear glass shelving removable and adjustable on 1" centers
- Blue Fin coated coil
- Compressor air intake from rear and out front panel at toe kick. Front panel cannot be blocked.
- Condensate pan (self-contained refrig. only)
- Integrated average product temperature of 40°F or less
- LED top & shelf lights
- One piece formed ABS plastic tub
- One year parts & labor; 5 year compressor warranty

Features	Standard	Options
FRAME EXTERIOR COLOR	<input type="checkbox"/> Black	<input type="checkbox"/> Painted (non-stock colors, specify RAL#) <input type="checkbox"/> Painted (stock colors, specify RAL#) <input type="checkbox"/> Stainless steel
INTERIOR COLOR	<input type="checkbox"/> Black	<input type="checkbox"/> NOTE: Interior color must be FDA & NSF approved <input type="checkbox"/> Painted (stock colors, specify RAL#) <input type="checkbox"/> Stainless steel
PANEL EXTERIOR	<input type="checkbox"/> Laminated (non-premium) Confirm pattern/grain direction	<input type="checkbox"/> Laminated (premium) Confirm pattern/grain direction <input type="checkbox"/> Stainless steel
BASE SUPPORT	<input type="checkbox"/> Adjustable, locking casters	<input type="checkbox"/> 6"H stainless steel legs <input type="checkbox"/> Shims (standard w/ remote)
END PANEL LEFT	<input type="checkbox"/> Full end panel	<input type="checkbox"/> No end panel w/ synchronized defrost
END PANEL RIGHT	<input type="checkbox"/> Full end panel	<input type="checkbox"/> No end panel w/ synchronized defrost
LOWER FRONT PANEL	<input type="checkbox"/> Black	<input type="checkbox"/> Painted (stock colors, specify RAL#) <input type="checkbox"/> Stainless steel
LOWER REAR PANEL	<input type="checkbox"/> Black	<input type="checkbox"/> Painted (stock colors, specify RAL#) <input type="checkbox"/> Stainless steel
UPPER REAR	<input type="checkbox"/> Solid back panel	<input type="checkbox"/> Clear glass rear sliding doors <input type="checkbox"/> Reflective glass rear sliding doors
LIGHTS	<input type="checkbox"/> LED 3500K w/ frosted lens	<input type="checkbox"/> LED 3000K w/ frosted lens <input type="checkbox"/> LED 4000K w/ frosted lens
ELECTRICAL CONNECT	<input type="checkbox"/> 6' Straight blade power cord (self-cont.)	<input type="checkbox"/> 6' Locking power cord (self-cont.) <input type="checkbox"/> Electrical leads (remote)
REFRIGERATION	<input type="checkbox"/> Breeze~E (Type-II) w/ EnergyWise s/c refrigeration (rear access)	<input type="checkbox"/> Breeze~E (Type-II) w/ EnergyWise s/c refrigeration (front access) <input type="checkbox"/> Remote w/thermostat, solenoid & TXV (front access) <input type="checkbox"/> Remote w/thermostat, solenoid & TXV (rear access)
MISCELLANEOUS		<input type="checkbox"/> Rear door lock <input type="checkbox"/> Second year parts & labor warranty (excludes compressor)
ACCESSORIES		<input type="checkbox"/> 4"D full chimney rear wall spacer (front access only) <input type="checkbox"/> 4"D open rear wall spacer (front access only) <input type="checkbox"/> Clean Sweep® coil cleaner (n/a w/remote) <input type="checkbox"/> Clear acrylic security cover, removable, locking <input type="checkbox"/> Night curtain, retractable, non-locking

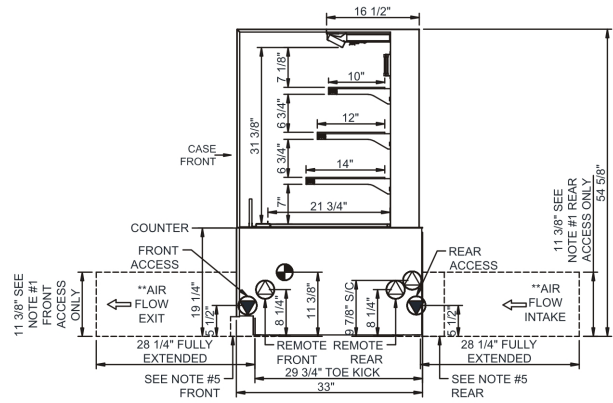
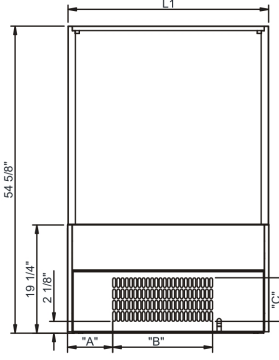
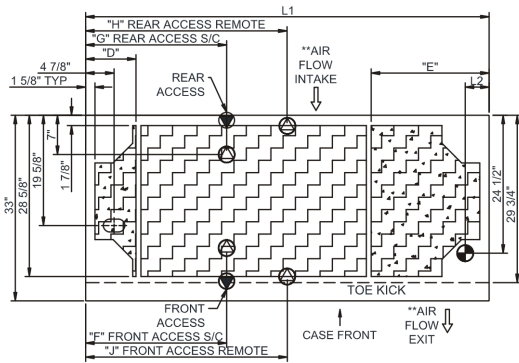
Reveal[®]

Product Specifications

Intended Environment: Type II - Designed to operate in ambient conditions of 80°F and 60% relative humidity unless noted otherwise in system information below.		
Zone	Intended Product To Be Displayed	Warmest Avg Prod Temp ° F
1	Packaged refrigerated products	40

PLAN VIEW

SIDE VIEW



	"D"	"E"	"F"	"G"	"H"	"J"
NR3655RSSV	N/A	N/A	7"	7"	17 7/8"	17 7/8"
NR4855RSSV	N/A	N/A	12 3/4"	12 3/4"	23 7/8"	23 7/8"
NR6055RSSV	9"	9"	12 3/4"	24 3/4"	29 7/8"	29 7/8"
NR7255RSSV	9"	21"	25 1/8"	25 1/8"	35 7/8"	35 7/8"

	"A"	"B"	"C"
NR3655RSSV	8"	17 3/4"	7 3/4"
NR4855RSSV	7"	30 1/2"	7 3/4"
NR6055RSSV	13"	30 1/2"	7 3/4"
NR7255RSSV	25"	30 1/2"	7 3/4"

- NOTES:
- 11 3/8" TALL, FULL WIDTH OF CASE OPENING IN CABINET OR COUNTER IS REQUIRED TO PULL OUT REFRIGERATION SYSTEM.
 - BACK OF COUNTER / CABINET MUST BE VENTED PROPERLY FOR ADEQUATE AIRFLOW TO CONDENSER.
 - **REPRESENTS REAR PULLOUT REFRIGERATION. AIR FLOW INTAKE AND EXIT DETAILS ARE REVERSED WITH FRONT PULLOUT REFRIGERATION OPTION.
 - SELF-CONTAINED ACCESS ONLY BY PULLING OUT CONDENSER UNIT.
 - 4" OPEN AREA CLEARANCE REQUIRED FOR AIR FLOW FRONT AND REAR OF CASE.

NOTE: ALL DIMENSIONS APPROXIMATE

- ELECTRICAL JUNCTION BOX (SUPPLIED WITH 6" LEADS OR POWER CORD).
- REFRIGERATION LINE CONNECTION.
- SELF-CONTAINED CASE SERVICE ACCESS AREA.
- LOCATION OF DRAIN TUBE FOR REMOTE REF. ONLY (SUPPLIED WITH 3/4" OR 1 1/2" PVC TUBE).
- REMOTE FLOOR SINK & UTILITIES ACCESS AREA.
- DRY CASE SERVICE ACCESS AREA.

Model Technical Specifications																
Model	L"	L1"	L2"	System Circuit Volts			Phs	Freq	Amps ***	Watts	Wires	NEMA Plug	SST	Conv. Rack BTUH	Para. Rack BTUH	Est Wt
NR3655RSSV	N/A	35.75	4.13	Remote(Type I)	Circuit #1	110-120	1	60	1.20	54	2+G	Leads Single	20.00	2938	2720	750
				Remote(Type II)	Circuit #1	110-120	1	60	1.20	54	2+G	Leads Single	20.00	3650	3380	
				Self-Contained	Circuit #1	110-120	1	60	16.00	1,187	2+G	5-20P or L5-20P	N/A	N/A	N/A	
NR4855RSSV	N/A	47.75	4.13	Remote(Type I)	Circuit #1	110-120	1	60	1.56	82	2+G	Leads Single	20.00	3888	3600	950
				Remote(Type II)	Circuit #1	110-120	1	60	1.56	82	2+G	Leads Single	20.00	4838	4480	
				Self-Contained	Circuit #1	208-240	1	60	11.11	1,634	2+G	6-15P or L6-15P	N/A	N/A	N/A	
NR6055RSSV	N/A	59.75	4.13	Remote(Type I)	Circuit #1	110-120	1	60	1.60	92	2+G	Leads Single	20.00	4860	4500	1,000
				Remote(Type I)	Circuit #1	110-120	1	60	1.60	92	2+G	Leads Single	20.00	4860	4500	
				Remote(Type II)	Circuit #1	110-120	1	60	1.60	92	2+G	Leads Single	20.00	6026	5580	
NR7255RSSV	N/A	71.75	4.13	Self-Contained	Circuit #1	208-240	1	60	12.00	1,896	2+G	6-15P or L6-15P	N/A	N/A	N/A	1,100
				Remote(Type I)	Circuit #1	110-120	1	60	1.64	105	2+G	Leads Single	20.00	5789	5360	
				Remote(Type II)	Circuit #1	110-120	1	60	1.64	105	2+G	Leads Single	20.00	7193	6660	

*** Does not include electric defrost on freezer models.

Important Notes:

- 1) ELECTRICAL NOTE: If GFCI is required, a GFCI breaker MUST be used in lieu of a GFCI receptacle
- 2) Back side of counter must be open or vented the full length of the unit to allow proper ventilation for the refrigeration system.
- 3) Glass warranty only applicable to first point of delivery.

WARNING: This product can expose you to chemicals, including Urethane (Ethyl Carbamate), which are known to the State of California to cause cancer and birth defects or other reproductive harm. For more information go to www.P65Warnings.ca.gov.

Regulatory Approvals:

All Models	Accordance with AHRI Std 1200 ETL Listed to UL 471 ETL Listed to CAN/CSA 22.2 No. 120 ETL Sanitation to NSF/ANSI 7
------------	---



In Accordance with
AHRI Std 1200

DOE 2017
Energy Efficiency
Compliant

888 E. Porter Rd.
Muskegon, MI 49441
Ph. 231-798-8888
Fx. 231-798-4960
www.structuralconcepts.com

Note: Information is subject to change at any time.
Visit www.structuralconcepts.com for the most current specs.

Revised 10/14/2021

20969691

