

Refrigerated Self-Service Slide In Counter Case



Conforms to NSF STD 7
TYPE II

- NE3635RSSV
- NE4835RSSV
- NE6035RSSV
- NE7235RSSV

Lengths include end panels
 35-3/4"L x 33"D x 35-3/8"H
 47-3/4"L x 33"D x 35-3/8"H
 59-3/4"L x 33"D x 35-3/8"H
 71-3/4"L x 33"D x 35-3/8"H

STANDARD FEATURES

- NOTE: Contact Factory for lead time
- NOTE: Glass warranty only applicable to first point of delivery
- Breeze~E (Type-II) w/ EnergyWise s/c refrigeration
- (3) Levels of clear glass shelving removable and adjustable on 1" centers
- Blue Fin coated coil
- Compressor air rear intake, front discharge
- Condensate pan (self-contained refrig. only)
- Integrated average product temperature of 40°F or less
- LED top & shelf lights
- NOTE: Overall case height is 54-5/8" (includes below counter)
- One piece formed ABS plastic tub
- One year parts & labor; 5 year compressor warranty
- Slide in base

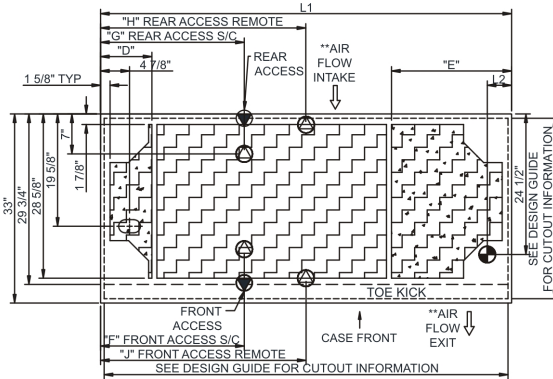
| Features | Standard | Options |
|----------------------|---|---|
| FRAME EXTERIOR COLOR | <input type="checkbox"/> Black | <input type="checkbox"/> Painted (non-stock colors, specify RAL#) <input type="checkbox"/> Painted (stock colors, specify RAL#) <input type="checkbox"/> Stainless steel |
| INTERIOR COLOR | <input type="checkbox"/> Black | <input type="checkbox"/> NOTE: Interior color must be FDA & NSF approved <input type="checkbox"/> Painted (stock colors, specify RAL#) <input type="checkbox"/> Stainless steel |
| LEFT END GLASS | <input type="checkbox"/> Glass end | <input type="checkbox"/> No end glass w/ synchronized defrost |
| RIGHT END GLASS | <input type="checkbox"/> Glass end | <input type="checkbox"/> No end glass w/ synchronized defrost |
| UPPER REAR | <input type="checkbox"/> Solid back panel | <input type="checkbox"/> Clear glass rear sliding doors <input type="checkbox"/> Reflective glass rear sliding doors |
| LIGHTS | <input type="checkbox"/> LED 3500K w/ frosted lens | <input type="checkbox"/> LED 3000K w/ frosted lens <input type="checkbox"/> LED 4000K w/ frosted lens |
| ELECTRICAL CONNECT | <input type="checkbox"/> 6' Straight blade power cord (self-cont.) | <input type="checkbox"/> 6' Locking power cord (self-cont.) <input type="checkbox"/> Electrical leads (remote) |
| REAR VENTED PANEL | <input type="checkbox"/> None | <input type="checkbox"/> NOTE: Unit can intake & discharge from rear w/ optional rear vented panel <input type="checkbox"/> Painted (stock colors, specify RAL#) <input type="checkbox"/> Stainless steel |
| REFRIGERATION | <input type="checkbox"/> Breeze~E (Type-II) w/ EnergyWise s/c refrigeration (rear access) | <input type="checkbox"/> Breeze~E (Type-II) w/ EnergyWise s/c refrigeration (front access) (see important notes) <input type="checkbox"/> Remote w/thermostat, solenoid & TXV (front access) <input type="checkbox"/> Remote w/thermostat, solenoid & TXV (rear access) |
| MISCELLANEOUS | | <input type="checkbox"/> Rear door lock <input type="checkbox"/> Second year parts & labor warranty (excludes compressor) |
| ACCESSORIES | | <input type="checkbox"/> Clean Sweep® coil cleaner (n/a w/remote) <input type="checkbox"/> Clear acrylic security cover, removable, locking <input type="checkbox"/> Night curtain, retractable, non-locking |

Reveal[®]

Product Specifications

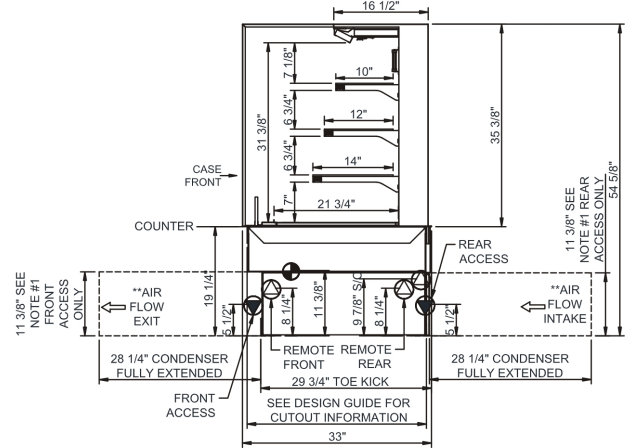
| | |
|--|---|
| Intended Environment: Type II - Designed to operate in ambient conditions of 80°F and 60% relative humidity unless noted otherwise in system information below. | |
| Zone | Intended Product To Be Displayed |
| 1 | Packaged refrigerated products |
| Warmest Avg Prod Temp ° F | |
| 40 | |

PLAN VIEW



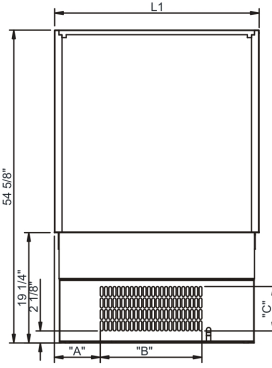
| | "D" | "E" | "F" | "G" | "H" | "J" |
|------------|-----|-----|---------|---------|---------|---------|
| NE3635RSSV | N/A | N/A | 7" | 7" | 17 7/8" | 17 7/8" |
| NE4835RSSV | N/A | N/A | 12 3/4" | 12 3/4" | 23 7/8" | 23 7/8" |
| NE6035RSSV | 9" | 9" | 12 3/4" | 24 3/4" | 29 7/8" | 29 7/8" |
| NE7235RSSV | 9" | 21" | 25 1/8" | 25 1/8" | 35 7/8" | 35 7/8" |

SIDE VIEW



NOTES:

- 11 3/8" TALL, FULL WIDTH OF CASE OPENING IN CABINET OR COUNTER IS REQUIRED TO PULL OUT REFRIGERATION SYSTEM.
- BACK OF COUNTER / CABINET MUST BE VENTED PROPERLY FOR ADEQUATE AIRFLOW TO CONDENSER.
- **REPRESENTS REAR PULLOUT REFRIGERATION. AIR FLOW INTAKE AND EXIT DETAILS ARE REVERSED WITH FRONT PULLOUT REFRIGERATION OPTION.
- SELF-CONTAINED ACCESS ONLY BY PULLING OUT CONDENSER UNIT.
- SEE "COUNTER INSTALLATION GUIDE" FOR AIR FLOW REQUIREMENTS.



| | "A" | "B" | "C" |
|------------|-----|---------|--------|
| NE3635RSSV | 8" | 17 3/4" | 7 3/4" |
| NE4835RSSV | 7" | 30 1/2" | 7 3/4" |
| NE6035RSSV | 13" | 30 1/2" | 7 3/4" |
| NE7235RSSV | 25" | 30 1/2" | 7 3/4" |

NOTE: ALL DIMENSIONS APPROXIMATE

- ELECTRICAL JUNCTION BOX (SUPPLIED WITH 6" LEADS OR POWER CORD).
- LOCATION OF DRAIN TUBE FOR REMOTE REF. ONLY (SUPPLIED WITH 3/4" OR 1 1/2" PVC TUBE).

- REFRIGERATION LINE CONNECTION.
- REMOTE FLOOR SINK & UTILITIES ACCESS AREA.

- SELF-CONTAINED CASE SERVICE ACCESS AREA.
- DRY CASE SERVICE ACCESS AREA.

Model Technical Specifications

| Model | L" | L1" | L2" | System Circuit Volts | | Phs | Freq | Amps *** | Watts | Wires | NEMA Plug | SST | Conv. Rack BTUH | Para. Rack BTUH | Est Wt |
|------------|-----|-------|------|----------------------|------------|---------|------|----------|-------|-------|-----------|-----------------|-----------------|-----------------|--------|
| NE3635RSSV | N/A | 35.75 | 4.13 | Remote(Type I) | Circuit #1 | 110-120 | 1 | 60 | 1.20 | 54 | 2+G | 20.00 | 2938 | 2720 | 750 |
| | | | | Remote(Type II) | Circuit #1 | 110-120 | 1 | 60 | 1.20 | 54 | 2+G | 20.00 | 3650 | 3380 | |
| | | | | Self-Contained | Circuit #1 | 110-120 | 1 | 60 | 16.00 | 1,187 | 2+G | 5-20P or L5-20P | N/A | N/A | |
| NE4835RSSV | N/A | 47.75 | 4.13 | Remote(Type I) | Circuit #1 | 110-120 | 1 | 60 | 1.56 | 82 | 2+G | 20.00 | 3888 | 3600 | 950 |
| | | | | Remote(Type II) | Circuit #1 | 110-120 | 1 | 60 | 1.56 | 82 | 2+G | 20.00 | 4838 | 4480 | |
| | | | | Self-Contained | Circuit #1 | 208-240 | 1 | 60 | 11.11 | 1,634 | 2+G | 6-15P or L6-15P | N/A | N/A | |
| NE6035RSSV | N/A | 59.75 | 4.13 | Remote(Type I) | Circuit #1 | 110-120 | 1 | 60 | 1.60 | 92 | 2+G | 20.00 | 4860 | 4500 | 1,000 |
| | | | | Remote(Type II) | Circuit #1 | 110-120 | 1 | 60 | 1.60 | 92 | 2+G | 20.00 | 6026 | 5580 | |
| | | | | Self-Contained | Circuit #1 | 208-240 | 1 | 60 | 12.00 | 1,896 | 2+G | 6-15P or L6-15P | N/A | N/A | |
| NE7235RSSV | N/A | 71.75 | 4.13 | Remote(Type I) | Circuit #1 | 110-120 | 1 | 60 | 1.64 | 105 | 2+G | 20.00 | 5789 | 5360 | 1,100 |
| | | | | Remote(Type II) | Circuit #1 | 110-120 | 1 | 60 | 1.64 | 105 | 2+G | 20.00 | 7193 | 6660 | |
| | | | | Self-Contained | Circuit #1 | 208-240 | 1 | 60 | 12.00 | 1,909 | 2+G | 6-15P or L6-15P | N/A | N/A | |

*** Does not include electric defrost on freezer models.

Regulatory Approvals:

| | |
|------------|---|
| All Models | Accordance with AHRI Std 1200 ETL Listed to UL 471 ETL Listed to CAN/CSA 22.2 No. 120 ETL Sanitation to NSF/ANSI 7 |
|------------|---|



In Accordance with **AHRI Std 1200**
DOE 2017 Energy Efficiency Compliant

Important Notes:

- 1) ELECTRICAL NOTE: If GFCI is required, a GFCI breaker MUST be used in lieu of a GFCI receptacle
- 2) Verify ventilation requirements for your installation by referring to the Design guide located in our Foodservice Resource Library at structuralconcepts.com.
- 3) Rear Access Standard - Counter must be configured to allow air to be drawn in the rear and discharged out the front.
- 4) Front Access Option - Counter must be configured to allow air to be drawn in the front and discharged out the rear.
- 5) Unit can intake and discharge from rear with optional rear vented panel.
- 6) 19.25" minimum space required beneath counter surface.
- 7) Due to DOE regulations, the maximum counter height on this model is 30".
- 8) Glass warranty only applicable to first point of delivery.

WARNING: This product can expose you to chemicals, including Urethane (Ethyl Carbamate), which are known to the State of California to cause cancer and birth defects or other reproductive harm. For more information go to www.P65Warnings.ca.gov.



888 E. Porter Rd.
Muskegon, MI 49441
Ph. 231-798-8888
Fx. 231-798-4960
www.structuralconcepts.com

Note: Information is subject to change at any time.
Visit www.structuralconcepts.com for the most current specs.

Revised 10/14/2021

20942165