

### Refrigerated Service Slide In Counter Case



Conforms to NSF STD 7  
**TYPE II**

- NE3613RSV
- NE4813RSV
- NE6013RSV
- NE7213RSV

Lengths include end panels  
 35-3/4"L x 33"D x 13-5/8"H  
 47-3/4"L x 33"D x 13-5/8"H  
 59-3/4"L x 33"D x 13-5/8"H  
 71-3/4"L x 33"D x 13-5/8"H

#### STANDARD FEATURES

- NOTE: Glass warranty only applicable to first point of delivery
- Breeze~E (Type-II) w/ EnergyWise s/c refrigeration
- Blue Fin coated coil
- Compressor air rear intake, front discharge
- Condensate pan (self-contained refrig. only)
- Integrated average product temperature of 40°F or less
- LED top light
- NOTE: Overall case height is 32-7/8" (includes below counter)
- One piece formed ABS plastic tub
- One year parts & labor; 5 year compressor warranty
- Slide in base
- Vertical, fixed front & side UV bonded frameless glass

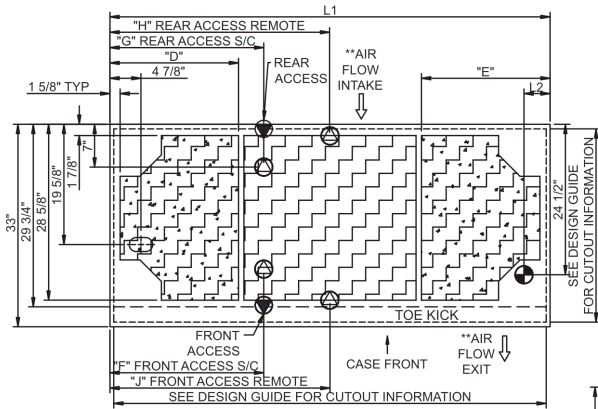
Features	Standard	Options
FRAME EXTERIOR COLOR	<input type="checkbox"/> Black	<input type="checkbox"/> Painted (non-stock colors, specify RAL#) <input type="checkbox"/> Painted (stock colors, specify RAL#) <input type="checkbox"/> Stainless steel
INTERIOR COLOR	<input type="checkbox"/> Black	<input type="checkbox"/> NOTE: Interior color must be FDA & NSF approved <input type="checkbox"/> Painted (stock colors, specify RAL#) <input type="checkbox"/> Stainless steel
LEFT END GLASS	<input type="checkbox"/> Glass end	<input type="checkbox"/> No end glass w/ synchronized defrost
RIGHT END GLASS	<input type="checkbox"/> Glass end	<input type="checkbox"/> No end glass w/ synchronized defrost
UPPER REAR	<input type="checkbox"/> Clear glass rear sliding doors	<input type="checkbox"/> Reflective glass rear sliding doors
LIGHTS	<input type="checkbox"/> LED 3500K w/ frosted lens	<input type="checkbox"/> LED 3000K w/ frosted lens <input type="checkbox"/> LED 4000K w/ frosted lens
ELECTRICAL CONNECT	<input type="checkbox"/> 6' Straight blade power cord (self-cont.)	<input type="checkbox"/> 6' Locking power cord (self-cont.) <input type="checkbox"/> Electrical leads (remote)
REAR VENTED PANEL	<input type="checkbox"/> None	<input type="checkbox"/> NOTE: Unit can intake & discharge from rear w/ optional rear vented panel <input type="checkbox"/> Painted (stock colors, specify RAL#) <input type="checkbox"/> Stainless steel
REFRIGERATION	<input type="checkbox"/> Breeze~E (Type-II) w/ EnergyWise s/c refrigeration (rear access)	<input type="checkbox"/> Breeze~E (Type-II) w/ EnergyWise s/c refrigeration (front access) (see important notes) <input type="checkbox"/> Remote w/thermostat, solenoid & TXV (front access) <input type="checkbox"/> Remote w/thermostat, solenoid & TXV (rear access)
MISCELLANEOUS		<input type="checkbox"/> Rear door lock <input type="checkbox"/> Second year parts & labor warranty (excludes compressor)
ACCESSORIES		<input type="checkbox"/> Clean Sweep® coil cleaner (n/a w/remote)

# Reveal®

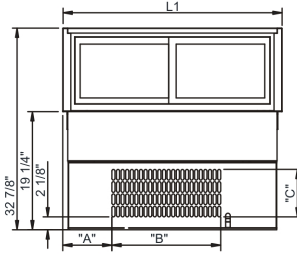
## Product Specifications

<b>Intended Environment:</b> Type II - Designed to operate in ambient conditions of 80°F and 60% relative humidity unless noted otherwise in system information below.		
<b>Zone</b>	<b>Intended Product To Be Displayed</b>	<b>Warmest Avg Prod Temp ° F</b>
1	Unpackaged refrigerated products	40

PLAN VIEW

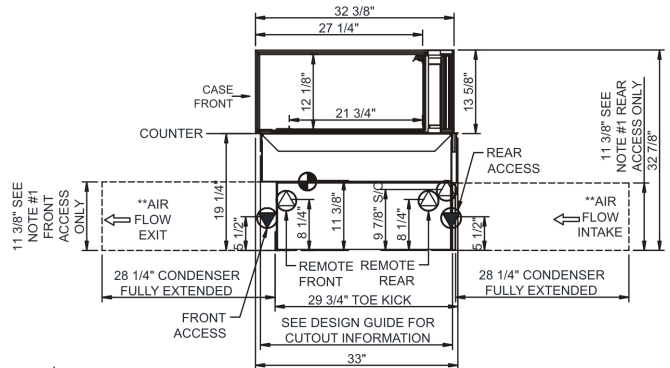


	"D"	"E"	"F"	"G"	"H"	"J"
NE3613RSV	N/A	N/A	7"	7"	17 7/8"	17 7/8"
NE4813RSV	9"	9"	12 3/4"	12 3/4"	23 7/8"	23 7/8"
NE6013RSV	9"	21"	12 3/4"	24 3/4"	29 7/8"	29 7/8"
NE7213RSV	21"	21"	25 1/8"	25 1/8"	35 7/8"	35 7/8"



	"A"	"B"	"C"
NE3613RSV	8"	17 3/4"	7 3/4"
NE4813RSV	14"	17 3/4"	7 3/4"
NE6013RSV	26"	17 3/4"	7 3/4"
NE7213RSV	26"	17 3/4"	7 3/4"

SIDE VIEW



- NOTES:
- 11 3/8" TALL, FULL WIDTH OF CASE OPENING IN CABINET OR COUNTER IS REQUIRED TO PULL OUT REFRIGERATION SYSTEM.
  - SEE DESIGN GUIDE FOR CUTOUT SIZE IN CABINET FOR CASE TO DROP INTO.
  - BACK OF COUNTER / CABINET MUST BE VENTED PROPERLY FOR ADEQUATE AIRFLOW TO CONDENSER.
  - \*\*REPRESENTS REAR PULLOUT REFRIGERATION. AIR FLOW INTAKE AND EXIT DETAILS ARE REVERSED WITH FRONT PULLOUT REFRIGERATION OPTION.
  - SELF-CONTAINED ACCESS ONLY BY PULLING OUT CONDENSER UNIT.
  - SEE "COUNTER INSTALLATION GUIDE" FOR AIR FLOW REQUIREMENTS.

NOTE: ALL DIMENSIONS APPROXIMATE

- ELECTRICAL JUNCTION BOX (SUPPLIED WITH 6" LEADS OR POWER CORD).
- LOCATION OF DRAIN TUBE FOR REMOTE REF. ONLY (SUPPLIED WITH 3/4" OR 1 1/2" PVC TUBE).

- REFRIGERATION LINE CONNECTION.
- REMOTE FLOOR SINK & UTILITIES ACCESS AREA.

- SELF-CONTAINED CASE SERVICE ACCESS AREA.
- DRY CASE SERVICE ACCESS AREA.

### Model Technical Specifications

Model	L"	L1"	L2"	System Circuit Volts		Phs	Freq	Amps ***	Watts	Wires	NEMA Plug	SST	Conv. Rack BTUH	Para. Rack BTUH	Est Wt	
NE3613RSV	N/A	35.75	4.13	Remote(Type I)	Circuit #1	110-120	1	60	0.78	14	2+G	Leads Single	20.00	626	580	650
				Remote(Type II)	Circuit #1	110-120	1	60	0.78	14	2+G	Leads Single	20.00	713	660	
				Self-Contained	Circuit #1	110-120	1	60	9.46	744	2+G	5-15P or L5-15P	N/A	N/A	N/A	
NE4813RSV	N/A	47.75	4.13	Remote(Type I)	Circuit #1	110-120	1	60	1.08	30	2+G	Leads Single	20.00	821	760	750
				Remote(Type II)	Circuit #1	110-120	1	60	1.08	30	2+G	Leads Single	20.00	929	860	
				Self-Contained	Circuit #1	110-120	1	60	9.76	759	2+G	5-15P or L5-15P	N/A	N/A	N/A	
NE6013RSV	N/A	59.75	4.13	Remote(Type I)	Circuit #1	110-120	1	60	1.38	45	2+G	Leads Single	20.00	1015	940	900
				Remote(Type II)	Circuit #1	110-120	1	60	1.38	45	2+G	Leads Single	20.00	1145	1060	
				Self-Contained	Circuit #1	110-120	1	60	10.06	775	2+G	5-15P or L5-15P	N/A	N/A	N/A	
NE7213RSV	N/A	71.75	4.13	Remote(Type I)	Circuit #1	110-120	1	60	1.38	47	2+G	Leads Single	20.00	1210	1120	1,000
				Remote(Type II)	Circuit #1	110-120	1	60	1.38	47	2+G	Leads Single	20.00	1361	1260	
				Self-Contained	Circuit #1	110-120	1	60	10.06	777	2+G	5-15P or L5-15P	N/A	N/A	N/A	

\*\*\* Does not include electric defrost on freezer models.

### Regulatory Approvals:

All Models	Accordance with AHRI Std 1200 ETL Listed to UL 471 ETL Listed to CAN/CSA 22.2 No. 120 ETL Sanitation to NSF/ANSI 7
------------	-----------------------------------------------------------------------------------------------------------------------------



In Accordance with  
**AHRI Std 1200**

DOE 2017  
Energy Efficiency  
Compliant

### Important Notes:

- ELECTRICAL NOTE: If GFCI is required, a GFCI breaker MUST be used in lieu of a GFCI receptacle
- Back side of counter must be open or vented the full length of the unit to allow proper ventilation for the refrigeration system.
- A vent in the front of the counter recommended to help dissipate compressor heat.
- Rear Access Standard - Counter must be configured to allow air to be drawn in the rear and discharged out the front.
- Front Access Option - Counter must be configured to allow air to be drawn in the front and discharged out the rear.
- Unit can intake and discharge from rear with optional rear vented panel.
- 19.25" minimum space required beneath counter surface.
- Glass warranty only applicable to first point of delivery.

**WARNING:** This product can expose you to chemicals, including Urethane (Ethyl Carbamate), which are known to the State of California to cause cancer and birth defects or other reproductive harm. For more information go to [www.P65Warnings.ca.gov](http://www.P65Warnings.ca.gov).



888 E. Porter Rd.  
Muskegon, MI 49441  
Ph. 231-798-8888  
Fx. 231-798-4960  
[www.structuralconcepts.com](http://www.structuralconcepts.com)

Note: Information is subject to change at any time.  
Visit [www.structuralconcepts.com](http://www.structuralconcepts.com) for the most current specs.

Revised 10/14/2021

20942202