

Refrigerated Self-Service Dual Sided Case

- ☐ FSC463R
- ☐ FSC663R

Lengths include end panels
47"L x 49-1/2"D x 63-3/8"H
75-3/8"L x 49-1/2"D x 63-3/8"H



NOTE: SHOWN W/ OPTIONAL CUTAWAY END PANELS



STANDARD FEATURES

- Breeze~E (Type-II) w/ EnergyWise s/c refrigeration
- 6' Power cord
- Blue Fin coated coil
- Casters w/ levelers
- Compressor air intake in one side & out other side. All louvered panels cannot be blocked
- LED 3500K top light(s)
- NOTE: Electrical specs reflect highest Amp draw using lighted shelves option
- One year parts & labor; 5 year compressor warranty
- Price tag molding (matches interior color)
- Removable deck pans provide complete access to evaporator coil & refrigeration connections

Features	Standard	Options
EXTERIOR COLOR	<input type="checkbox"/> Laminated (non-premium) Confirm pattern/grain direction	<input type="checkbox"/> Laminated (premium) Confirm pattern/grain direction <input type="checkbox"/> Stainless steel (includes lower front panel)
INTERIOR COLOR	<input type="checkbox"/> Black	<input type="checkbox"/> Stainless steel
LOWER FRONT PANEL COLOR	<input type="checkbox"/> Black	<input type="checkbox"/> Stainless steel (w/stainless ext. only)
END PANEL LEFT	<input type="checkbox"/> Full end panel w/stainless mirrored interior (vinyl edging)	<input type="checkbox"/> Cutaway end panel (vinyl edge matches interior color)
END PANEL RIGHT	<input type="checkbox"/> Full end panel w/stainless mirrored interior (vinyl edging)	<input type="checkbox"/> Cutaway end panel (vinyl edge matches interior color)
SHELVING	<input type="checkbox"/> Non-adjustable metal shelves, non-lighted	<input type="checkbox"/> Non-adjustable metal shelves, lighted (LED 3500K)
ELECTRICAL CONNECT	<input type="checkbox"/> 6' Straight blade power cord (self-cont.)	<input type="checkbox"/> 6' Locking power cord (self-cont.) <input type="checkbox"/> Electrical leads (remote)
REFRIGERATION	<input type="checkbox"/> Breeze~E (Type-II) w/ EnergyWise s/c refrigeration	<input type="checkbox"/> Remote DX refrigeration
MISCELLANEOUS		<input type="checkbox"/> Night curtain, retractable, non-locking (inc. ht. to 69-1/2") (2) <input type="checkbox"/> Roll-down security cover, locking (inc. ht. to 69-1/2") (2) <input type="checkbox"/> Second year parts & labor warranty
ACCESSORIES		<input type="checkbox"/> Solid security cover, removable, locking (2)

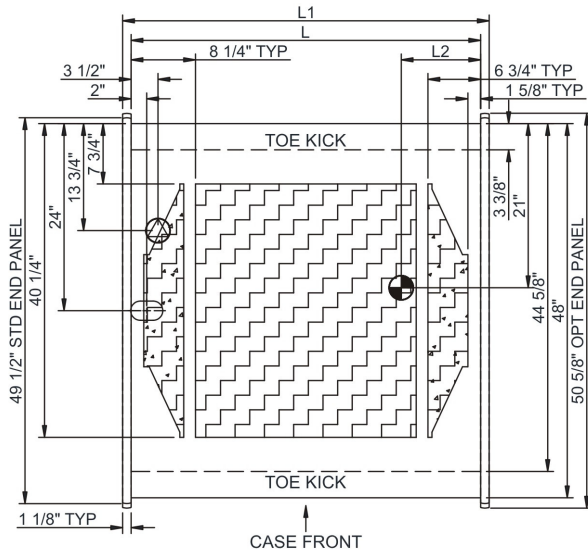
Oasis®

Product Specifications

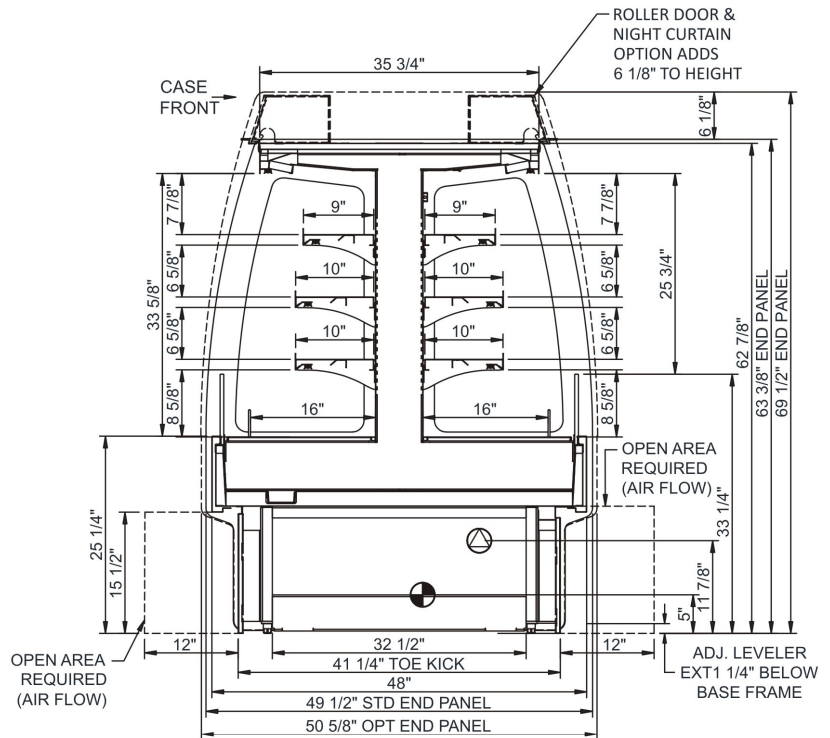
Intended Environment: Type II - Designed to operate in ambient conditions of 80°F and 60% relative humidity unless noted otherwise in system information below.

Zone	Intended Product To Be Displayed	Warmest Avg Prod Temp ° F
1	Packaged refrigerated products	40

PLAN VIEW



SIDE VIEW



NOTE: ALL DIMENSIONS APPROXIMATE

⊗ ELECTRICAL JUNCTION BOX
(SUPPLIED WITH 6\"

⊕ REFRIGERATION LINE CONNECTION.
⊞ REMOTE FLOOR SINK & UTILITIES
ACCESS AREA.

⊞ SELF-CONTAINED CASE SERVICE ACCESS AREA.
⊞ DRY CASE SERVICE ACCESS AREA.

Model Technical Specifications

Model	L"	L1"	L2"	System Circuit Volts			Phs	Freq	Amps ***	Watts	Wires	NEMA Plug	SST	Conv. Rack BTUH	Para. Rack BTUH	Est Wt
FSC463R	N/A	47.00	13.88	Remote(Type II)	Circuit #1	110-120	1	60	2.96	180	2+G	Leads Single	20.00	7690	7120	1,300
				Self-Contained	Circuit #1	208-240	1	60	14.17	2,182	2+G	6-20P or L6-20P	N/A	N/A	N/A	
FSC663R	N/A	75.38	13.88	Remote(Type I)	Circuit #1	110-120	1	60	3.46	250	2+G	Leads Single	20.00	10800	10000	1,900
				Self-Contained	Circuit #1	208-240	1	60	20.04	2,343	2+G	6-30P or L6-30P	N/A	N/A	N/A	

*** Does not include electric defrost on freezer models.

Regulatory Approvals:

All Models
 Accordance with AHRI Std 1200
 ETL Listed to UL 471
 ETL Listed to CAN/CSA 22.2 No. 120
 ETL Sanitation to NSF 7



In Accordance with
AHRI Std 1200

DOE 2017
Energy Efficiency
Compliant

Important Notes:

- 1) ELECTRICAL NOTE: If GFCI is required, a GFCI breaker MUST be used in lieu of a GFCI receptacle
- 2) Electrical specs reflect highest Amp draw using lighted shelves option

⚠ WARNING: This product can expose you to chemicals, including Urethane (Ethyl Carbamate), which are known to the State of California to cause cancer and birth defects or other reproductive harm. For more information go to www.P65Warnings.ca.gov.