



The Signature of Quality®

FEDERAL INDUSTRIES

A Standex Company

215 Federal Avenue Belleville
Wisconsin 53508-9201

Phone: 800-356-4206

Fax: 608-424-3234

Email: Geninfo@Federalind.com

Website: Federalind.com

Project Name: _____

Item #: _____

Model #: _____ Qty: _____

Approval: _____

AIA #

SIS #

Refrigerated Self-Serve High Profile Specialty Merchandiser – 60" H x 35" W

Designed with impulse sales in mind. Get maximum return from an attention-grabbing merchandiser and increase profits.



Model RSSM360SC Shown

MODEL	DIMENSIONS (Includes End Panels)
<input type="checkbox"/> RSSM360SC	36 x 35.25 x 60.25 (in) 914 x 895 x 1530 (mm)
<input type="checkbox"/> RSSM460SC	47.25 x 35.25 x 60.25 (in) 1200 x 895 x 1530 (mm)
<input type="checkbox"/> RSSM560SC	59.25 x 35.25 x 60.25 (in) 1505 x 895 x 1530 (mm)
<input type="checkbox"/> RSSM660SC	71.25 x 35.25 x 60.25 (in) 1810 x 895 x 1530 (mm)

STANDARD FEATURES

Model Features

- Welded powder coated steel base fabrication
- Choice of six standard laminates on exterior
- Black metal front grill and galvanized steel back
- Silver trim
- Stainless steel display deck, glass and black interior ends, black interior back panel
- Moisture resistant end panel construction with field replaceable tempered thermo-pane glass
- Front air intake/ front and rear air discharge
- Energy saving night curtain
- Adjustable Leg Levelers
- Condenser Air Filter

Refrigeration

- Electronic temperature control with on demand defrost
- PTC Condensate heater provided for a totally self-contained system
- Refrigeration controls maintain 38°-40°F (3.3°-4.4°C) Note: Case temperature will vary if the air curtain is disrupted.
- Insulated with high-density urethane foam
- Thermometer
- R449a refrigerant

Shelving

- Two tiers of adjustable black metal shelves with price tag molding. Shelves can be flat or slanted downwards at 10°

Lighting

- 3500K LED top light
- DLC certified, IP 65 rated

Agency Approvals

- UL, C-UL and UL Sanitation listed to NSF-7, Type I conditions
- DOE 2017 compliant

OPTIONAL ACCESSORIES

- | | |
|--|--|
| <input type="checkbox"/> Special Exterior Laminate Finish | <input type="checkbox"/> Legs, 6", (152mm) |
| <input type="checkbox"/> White Interior (Including Shelving) | <input type="checkbox"/> Square End Profile |
| <input type="checkbox"/> Stainless Steel Exterior Finish | <input type="checkbox"/> Skirt with Casters or Legs |
| <input type="checkbox"/> Stainless Steel Interior Back | <input type="checkbox"/> Cord & Plug (Self-Contained Models Only) |
| <input type="checkbox"/> Stainless Steel Shelves | <input type="checkbox"/> Joining Kit for Continuous Line-Ups |
| <input type="checkbox"/> Reflective End Glass | <input type="checkbox"/> Condensate Evaporator Assembly (Field Install) (Separate 120V,20A Circuit Required) (Remote Only) |
| <input type="checkbox"/> Deli Meat Pegs | <input type="checkbox"/> Remote Refrigeration with Condensate Pump (R449A Refrigerant) (EEV Included) |
| <input type="checkbox"/> Sliding or Hinged Rear Access Doors (Sliding not available on 360) | <input type="checkbox"/> Rear Air Inlet & Outlet (Front Knee Wall Application) |
| <input type="checkbox"/> Roll-up Security Cover (Square End Profile) | |
| <input type="checkbox"/> Removable Security Cover | |
| <input type="checkbox"/> 3rd Lighted (LED) Shelf | |
| <input type="checkbox"/> 2 1/2" (63.5 mm) or 4" (101.6mm) Casters (Self Contained Models Only) Cord Included | |



WARRANTY*
One year: Parts and Labor
2nd thru 5th year: part only
service compressor
(U.S.A. and Canada)

Note: Information is subject to change at any time. Visit www.federalind.com For the most current specs.

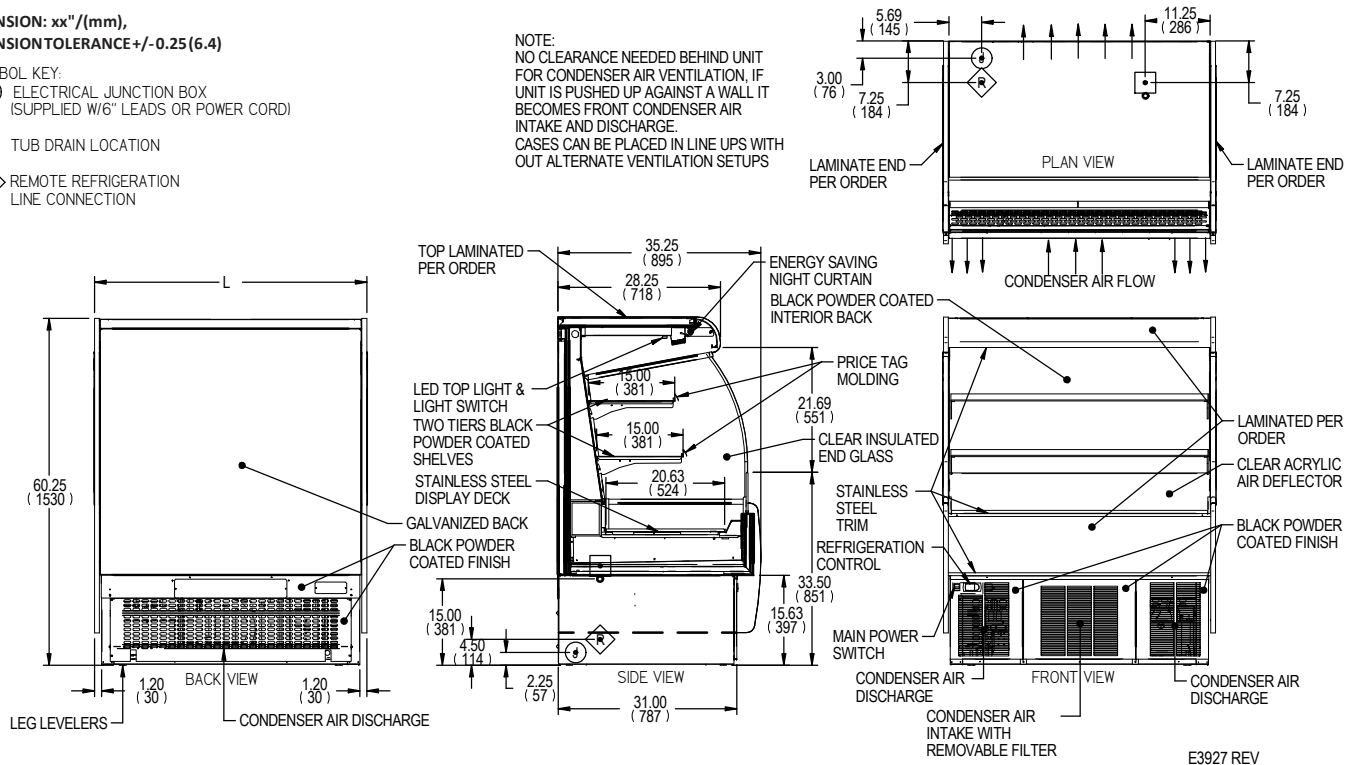
AIA #	Refrigerated Self-Serve High Profile Specialty Merchandiser – 60"H x 35"W
SIS #	Product Specifications

Intended Environment: Type I (Self Contained) - Designed to operate in maximum ambient conditions of 75°F (24°C) and 55% relative humidity. Type II (Remote) - Designed to operate in maximum ambient conditions of 80°F (24°C) and 55% relative humidity.		
Zone	Intended product to be displayed	Avg prod temp °F / °C
All	Packaged refrigerated products	38°F / (3.3°C)

**DIMENSION: xx"(/mm),
DIMENSION TOLERANCE +/- 0.25 (6.4)**

- SYMBOL KEY:
- ELECTRICAL JUNCTION BOX (SUPPLIED W/6" LEADS OR POWER CORD)
 - TUB DRAIN LOCATION
 - REMOTE REFRIGERATION LINE CONNECTION

NOTE:
NO CLEARANCE NEEDED BEHIND UNIT FOR CONDENSER AIR VENTILATION. IF UNIT IS PUSHED UP AGAINST A WALL IT BECOMES FRONT CONDENSER AIR INTAKE AND DISCHARGE.
CASES CAN BE PLACED IN LINE UPS WITH OUT ALTERNATE VENTILATION SETUPS



E3927 REV

MODEL	DIMENSIONS				TIERS	SHIPPING WHT		SELF CONTAINED		OPTIONAL NEMA PLUG	REMOTE		BTU @ 20° F
	L	D	H	UNITS		LBS	KILO	VOLTAGE	AMPS	CONFIG (SC)	VOLTAGE	AMPS	
RSSM360SC	36	35.25	60.25	in.	2	550	249	208-240/60/1	MAX FUSE 20	NEMA 6-20P	208-240/60/1	MAX FUSE 15	5400
	914	895	1530	mm.									
RSSM460SC	47.25	35.25	60.25	in.	2	650	295	208-240/60/1	MAX FUSE 20	NEMA 6-20P	208-240/60/1	MAX FUSE 15	7500
	1200	895	1530	mm.									
RSSM560SC	59.25	35.25	60.25	in.	2	800	363	208-240/60/1	MAX FUSE 30	NEMA 6-20P	208-240/60/1	MAX FUSE 15	9000
	1505	895	1530	mm.									
RSSM660SC	71.25	35.25	60.25	in.	2	900	408	208-240/60/1	MAX FUSE 30	NEMA 6-20P	208-240/60/1	MAX FUSE 15	10500
	1810	895	1530	mm.									

- Due to continuing engineering improvements, specifications are subject to change without notice.
- Case temperature will vary if the air curtain is disrupted.



FEDERAL INDUSTRIES
A Standex Company
215 Federal Avenue Belleville, Wisconsin 53508-9201

Phone: 800-356-4206
Fax: 608-424-3234
Email: Geninfo@Federalind.com
Website: Federalind.com