

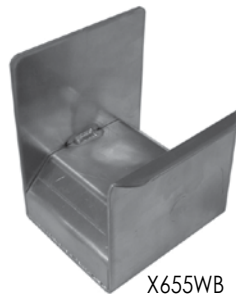
- **Isolate and Organize your Cleaning Supplies**
- **All Aluminum – Will Not Rust**
- **Wall Mount Units**  
Ideal for Limited Space  
Fold-Down Table – Latches Up Into Place  
Handy Paper Towel Holder
- **Variety of Sizes for**  
Aerosol Cans  
Quart Bottles  
Half-Gallon and Gallon Containers



X1320SC (closed)



X1320SC (open)



X655WB



XDR2024-12



X2730DC

## Storage Solutions

Model Number	Description	Size W x H x L	Wt.
X2730DC	Double Cabinet, 3 Shelf Can Organizer	8 <sup>7</sup> / <sub>8</sub> " x 30" x 26" (18 <sup>1</sup> / <sub>4</sub> " W - w/ Table Down)	17
X1320SC	Single Cabinet, 2 Shelf Can Organizer	4 <sup>1</sup> / <sub>2</sub> " x 20" x 12 <sup>7</sup> / <sub>8</sub> " (11 <sup>1</sup> / <sub>8</sub> " W - w/ Table Down)	6
X2730GC	Double Cabinet, 3 Shelf Gallon Organizer	12 <sup>3</sup> / <sub>8</sub> " x 30" x 26" (21 <sup>1</sup> / <sub>8</sub> " W - w/ Table Down)	20
X655WB	Wall Bracket for Hoses, Ropes and Cords	5" x 6" x 5"	1
XDR2024-12	Platform Step Stool with Anti-Skid Traction Tape	24" x 12" x 20" (Footprint)	10
HH319P	Handi-Helper Dolly holds 5 Gallon Containers	19 <sup>1</sup> / <sub>2</sub> " X 5" X 19 <sup>1</sup> / <sub>2</sub> "	6



HH319P