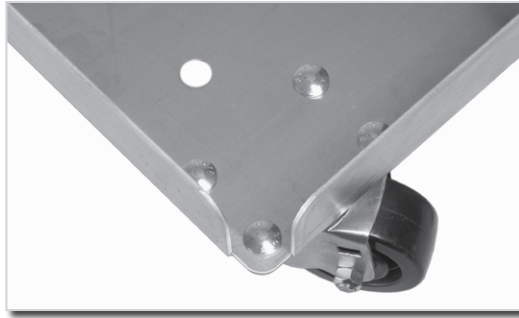


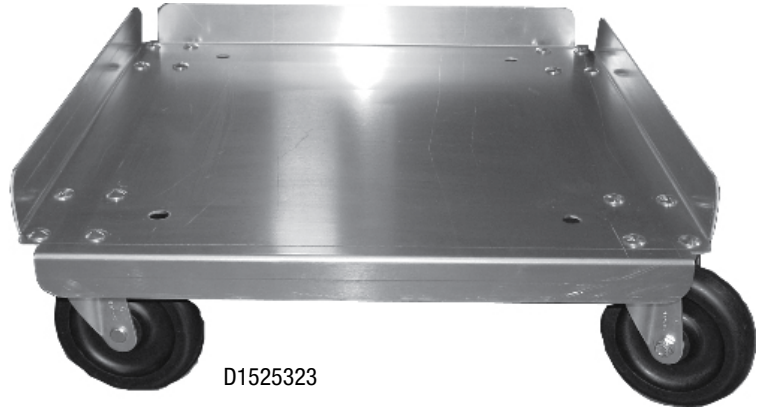
- ◆ **Solid One-Piece Design**
- ◆ **Easy to Clean Open Corners**
- ◆ **All Aluminum – Will Not Rust**
- ◆ **Heavy-Duty Polyolefin Casters**
3" x 1¼" Swivel, Plate
- ◆ **Ships “Knock Down”**
- ◆ **Optional**
Locking Casters



D18326-HAND



D18326



D1525323



Flat Dollies			
Model Number	Description	Size W x H x L	Weight
D19322	19" x 22", Chill Tray	19" x 6" x 22"	14
D21321	Glass Rack	21" x 6" x 21"	14
D18326	18" x 26" Bun/Dough Pan	18" x 6" x 26"	14
D17326	Lug Rack	17" x 6" x 26"	13
D1525323	Chicken Case	15¼" x 6" x 23"	12
D19322-HAND	19" x 22", Chill Tray with Handle	19" x 32" x 24"	18
D21321-HAND	Glass Rack with Handle	21" x 32" x 23"	18
D18326-HAND	18" x 26" Bun/Dough Pan with Handle	18" x 32" x 28"	18
D17326-HAND	Lug Rack with Handle	17" x 32" x 28"	17

Options: "CDVL3" - see page 77 for details.