



TOBIN ELLIS SIGNATURE COCKTAIL STATION 18" UTILITY SINK



*TSCE18PSTC
Shown with optional swing
spout faucet.*



*TSCE18PSTC-RC
Shown with optional swing spout
faucet and wet waste sink basket.*

| |
|-----------|
| JOB |
| AREA |
| ITEM NO. |
| MODEL NO. |


| |
|--------------------|
| Models |
| TSCE Series |
| TSCE18PSTC |
| TSCE18PSTC-RC |



Features

- Heavy gauge fabricated sink bowl(s) with one-piece seamless top with radius corners for easy cleaning
- Underside of sink(s) is sound deadened
- Integrated Glass Rinser to quickly rinse bartender shaker tins (not included)
- "Sectioned - multi-depth" tool caddy disher well to accommodate various length bar tools (tools not included). Factory installed fine stream "dipper" faucet.
- TSCE18PSTC-RC model has integrated Recessed Cubby storage which accommodates small tonic or mix bottles. Heavy gauge wire rod securely keeps bottles in place.
- Stainless steel legs install without tools and have "Rust Free" thermoplastic feet.

California Prop 65 Notice:

 **WARNING:** The materials used in this product may contain chemicals known to the State of California to cause cancer and birth defects or other reproductive harm, For more information go to www.P65Warnings.ca.gov.

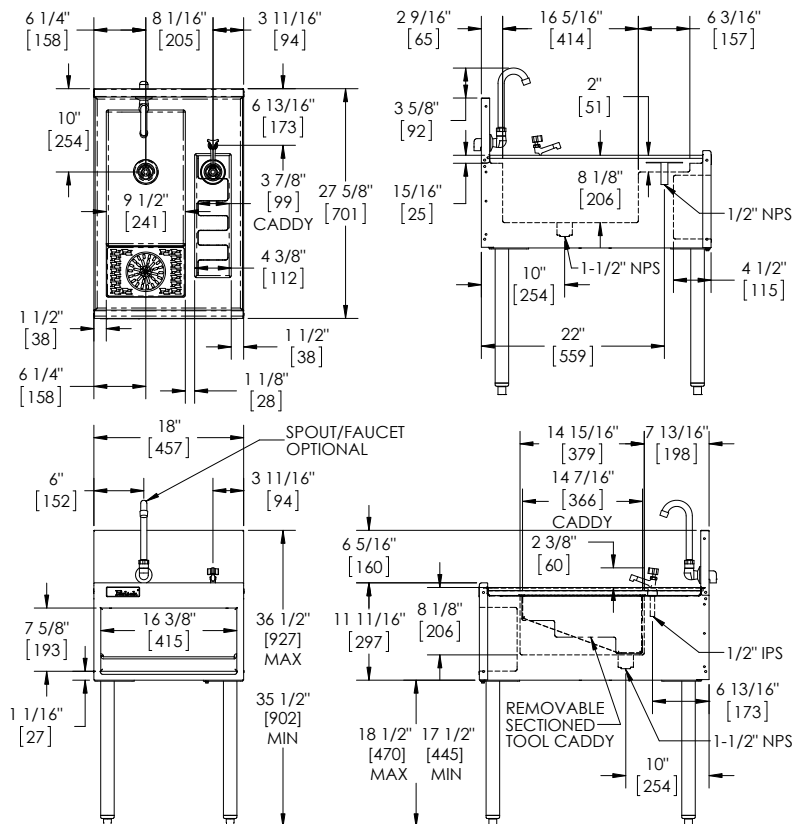
Form No. Z2384
Rev. 11.14.2018



TOBIN ELLIS SIGNATURE COCKTAIL STATION 18" UTILITY SINK

| PART NO. | TSCE18PSTC | TSCE18PSTC-RC |
|--|---|--|
| LENGTH IN. (mm) | 18" (457) | 18" (457) |
| SHIP WT. lbs (kg) | 60 (22.6) | 60 (22.6) |
| CONSTRUCTION | All stainless steel construction. | |
| BACKSPLASH | TSCE Series: Stainless steel 6" high (4" high optional) with 1" return at top, mechanically fastened and sealed. TSD Series: Not Applicable | |
| SINK - WET WASTE | Stainless steel sink bowl with 1/4" radius corners. Sound deadened to absorb sound. 9-1/2" x 16-5/16" x 7-3/16" deep. Furnished with 1-1/2" NPS stainless steel drain socket. Accommodates "optional" wet waste pan. | |
| GLASS RINSER | NSF listed stainless steel 4-3/8" diameter glass rack and valve assembly. 1/2" NPS thread for valve connection for 3/8" flexible hose. 9-1/2" x 6-3/16" x 15/16" deep pan has "Water fall" drainage into Wet Waste sink, eliminates need for additional drain. Includes removable glass rack. <i>Check local plumbing codes. Install in-line water regulator set to 15-20 psi (not included). Install in-line shut-off valve (not included) and turn off nightly.</i> | |
| TOOL CADDY DISHER WELL (Model TSCD18PSTC-RC) | Stainless steel sink bowl with 1/4" radius corners. Sound deadened to absorb sound. 4-3/8" c 14-5/16" x 7-3/16" deep. Furnished with 1-1/2" NPS stainless steel drain socket. Includes removable, sectioned, multi-depth tool caddy disher well to accommodate various length bar tools (not included). Includes factory installed NSF listed, low-lead, fine stream "dipper" faucet. | |
| RECESSED CUBBY STORAGE | N/A | Stainless steel recessed cubby storage in front face of module, 16-3/8" x 7-5/8" x 4-1/2" deep. Heavy gauge stainless steel rod retainer, keeps small bottle secure. |
| LEGS | 1-5/8" tubular, stainless steel with 1" adjustable thermoplastic foot. | |
| ACCESSORIES | NSF Listed, low lead compliant water faucets, spouts and foot operated pedals. | |

TSCE18PST-RC



Form No. Z2384
Rev. 11.14.2018