



Model: _____ Item #: _____ Date: _____
 Project: _____ Qty: _____ Approved By: _____

Self-Contained Back Bar Refrigeration with Mixing Door Configuration

Refrigeration



BS84R-S-D2-LS-RK shown



Sliding Drawers Available



Listed to NSF Standard 7 for open food storage

Electrical

- 115 V, 1 Phase, 60 Hz. Furnished with 8'-0" plug-in cord, which exits the left or right compressor side of cooler
- NEMA 5-15P Plug Configuration
- Dedicated 15 Amp circuit recommended
- 1 Door Model: 2.8 Full Load Amps, 1/5 HP
- 2 Door Model: 4.8 Full Load Amps, 1/4 HP
- 3 Door Model: 5.8 Full Load Amps, 1/3 HP
- 4 Door Model: 6.5 Full Load Amps, 1/3 HP

Refrigeration

- Self-contained 134A Refrigerant. 30°F-40°F operating range.
- Digital Thermostat on front grille
- R290 Hydrocarbon Refrigerant
- DynamicChill 360° Technology
- Heated mullion to minimize condensation
- Optional dual zone temperature control (60" & 84" units only)

Interior

- 20 gauge stainless steel with covered corners.
- Two adjustable NSF epoxy coated wire shelves with floor rack per door. (Does not include wine drawer selections)
- Integrated divider prevents bottles from falling into sliding drawer
- Door opening: 29-11/16" high x 19-15/16" wide
- Built-in Cool White LED Lighting (3600K)

Sliding Door Construction

- All stainless steel with built-in locks
- One 11" interior height drawer (15-1/2" overall)
- One 13-3/4" internal height drawer (18" overall)
- 18" drawer fits standard sized wine bottles standing up
- Soft stop technology
- Load Capacity: up to 175 lbs (80 kg) full-extension

Exterior

- Doors available in sliding drawer, S/S, and S/S with glass
- Stainless steel handles with built-in locks
- 35"H without top, 36"H with 1" Optional Top
- 24" front to back depth (25" with Top)
- Sides: 20 gauge stainless steel
- Front: 20 gauge stainless steel, black vinyl, or glass
- Back: 20 gauge galvanized steel
- Top: 18 gauge galvanized w/ option of 20 gauge stainless steel
- Available without a finished top for integrated bar installations.

Insulation

- 2" thick foamed-in-place polyurethane

Plumbing

- No drain connection required.
- Condensate pan included.

OPTIONS

Model	Description
BS-100	6" Stainless Steel Legs (Set of 4)
BS-101	6" Stainless Steel Legs (Set of 6)
BS-102	4" Stainless Steel Legs (Set of 4)
BS-103	4" Stainless Steel Legs (Set of 6)
BS-106	Left Side Stainless Steel Kick Plate
BS-107	Right Side Stainless Steel Kick Plate
BS-136	36" Stainless Steel Front Kick Plate
BS-160	60" Stainless Steel Front Kick Plate
BS-184	84" Stainless Steel Front Kick Plate
BS-201	White Wine Temp, 50°F - 55°F
BS-202	Red Wine Temp, 60°F - 65°F

OPTIONS

Model	Description
BS-500	Upgrade: Blue LED Light for Pass Thru
BS-501	Upgrade: Warm White 2800K LED Light
BC-130	1" Ultra Low Profile Casters w/ brakes (Set of 4)
BC-131	1" Ultra Low Profile Casters w/ brakes (Set of 6)
BC-132	2" Low Profile Casters w/ brakes (Set of 4)
BC-133	2" Low Profile Casters w/ brakes (Set of 6)
BC-134	3" Casters w/ brakes (Set of 4)
BC-135	3" Casters w/ brakes (Set of 6)
BD-101	Garnish Insert for Back Bar Cooler Drawers (Includes 2 extra cups)
BD-102	Set of 3 Adjustable Stainless Steel Wine Dividers for Back Bar Cooler Drawers



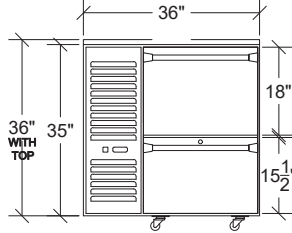
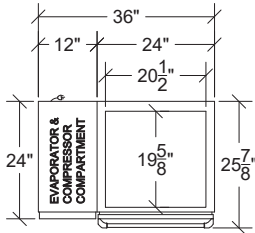
Model: _____ Item #: _____ Date: _____
 Project: _____ Qty: _____ Approved By: _____

Self-Contained Back Bar Refrigeration with Mixing Door Configuration

Refrigeration

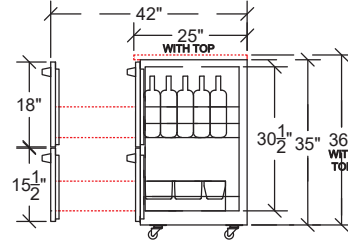
One Door (36")

235 lbs. (250 lbs. with Top)



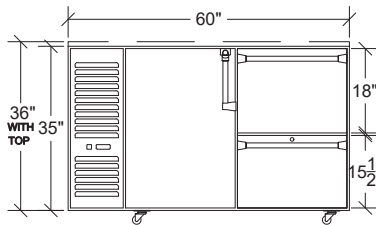
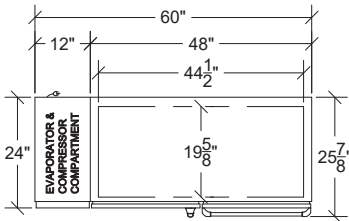
Side View - D1 Door Style

18" Drawer on Top, 15-1/2" Drawer on Bottom



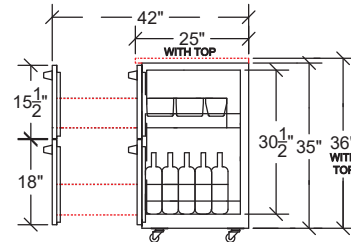
Two Door (60")

360 lbs. (380 lbs. with Top)



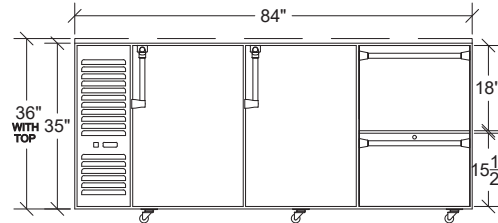
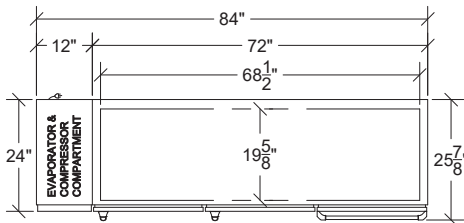
Side View - D2 Door Style

15-1/2" Drawer on Top, 18" Drawer on Bottom



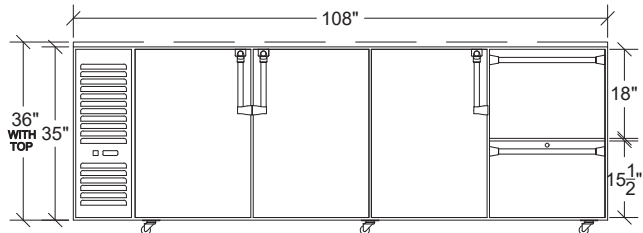
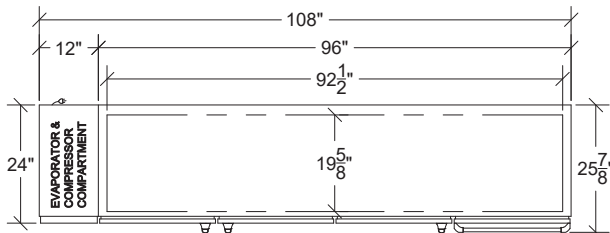
Three Door (84")

480 lbs. (505 lbs. with Top)



Four Door (108")

525 lbs. (580 lbs. with Top)



Note: Optional casters and legs available in several heights



Model: _____ Item #: _____ Date: _____
 Project: _____ Qty: _____ Approved By: _____

Self-Contained Back Bar Refrigeration with Mixing Door Configuration

Refrigeration

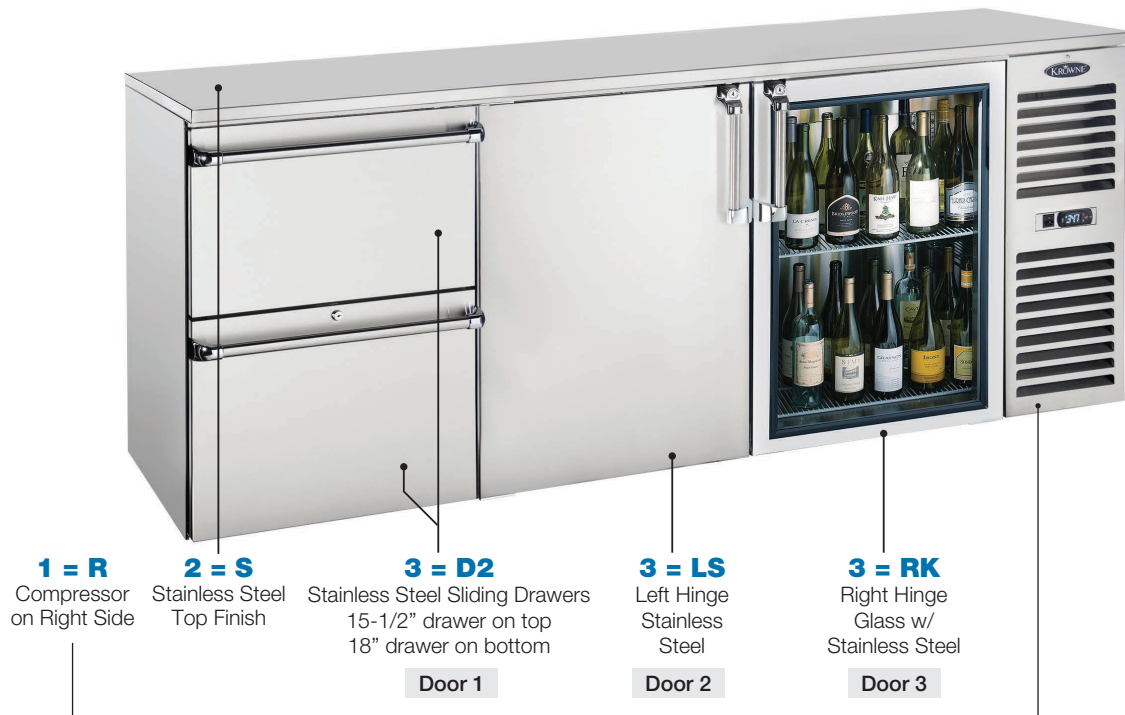
How to Configure Mixing Door Refrigeration

Use the below example as a guide towards building your own unit.

	Base Model	BS84		
1	Compressor Location	R		
2	Top Finish	S		
3	Door Style & Finish (choose from left to right)	D2	LS	RK
		Door 1	Door 2	Door 3

BS84 MIXING DOOR EXAMPLE

BS84R-S-D2-LS-RK
 1 2 3 3 3



Use this table to build the unit. Choose your doors from left to right.

1	Compressor Location	L = Compressor on Left
		R = Compressor on Right
2	Top Finish	N = Unfinished
		S = Stainless Steel (24 lbs.)
3	Door Style & Finish	D1 = 18" S/S Drawer on top, 15-1/2" S/S Drawer on bottom
		D2 = 15-1/2" S/S Drawer on top, 18" S/S Drawer on bottom
		LS = Left Hinge / Stainless Steel
		RS = Right Hinge / Stainless Steel
		LK = Left Hinge / Glass with Stainless Steel
		RK = Right Hinge / Glass with Stainless Steel

SAMPLE MODEL NUMBERS

36" One Door	BS36L-S-RS 1 2 3
60" Two Door	BS60R-N-D2-RK 1 2 3 3
84" Three Door	BS60L-S-LS-RS-RK 1 2 3 3 3
108" Four Door	BS108R-S-D1-LK-RK-RS 1 2 3 3 3 3