



Model: _____ Item #: _____ Date: _____

Project: _____ Qty: _____ Approved By: _____

60" - 72" Workstations with Liquor Displays

Royal Series Underbar



KR24-W60C-10 shown

Standard Features

- All stations are 24" depth front-to-back
- Built-in 10 circuit cold plate
- Insulated bottle section
- 12" deep ice bin
- 12" or 18" blender dump sink with Royal Series faucet
- 12" or 18" raised liquor display
- 12" recessed drainboard on "C" models
- Sound deadened single speed rail
- Removable bottle wells



Specifications

Materials	▪ Interior (Ice Bin): 20 gauge stainless steel. 12" deep ice bin section. 10" deep bottle section
	▪ Blender Shelf: 22 gauge stainless steel
	▪ Dump Sink (Blender): 20 gauge stainless steel
	▪ Drainboard: 20 gauge stainless steel
	▪ Front Apron: 20 gauge stainless steel clad over 20 gauge galvanized steel
Drains & Plumbing	▪ Backsplash: 20 gauge stainless steel
	▪ Back & Bottom: 20 gauge galvanized steel
	▪ Hot & Cold Water: 1/2" IPS
	▪ Ice Bin with Cold Plate: 1/2" IPS Drain connection. 4" PVC tailpiece provided. PVC tailpiece required to avoid condensation through metal to metal contact.
	▪ Ice Bin with No Cold Plate: 1" IPS Drain connection
Cold Plate	▪ Drainboard: 1" IPS drain connection
	▪ Dump Sink: 1-1/2" IPS drain connection
Tubing Access (Cold Plate)	▪ Cast aluminum post mix plate with 10 circuits. Plate is sealed into bottom. Each circuit is 5/16" OD stainless steel tubing. Two full with remainder to be half circuits. Bump and swedge fittings on ends.
	▪ 3/4" x 3-1/2" cutout in left side of backsplash
Bowl Size (Dump Sink)	▪ 12"W Dump Sink bowl size: 10" x 12" x 7", 18"W Dump Sink bowl size: 14" x 10" x 7"
Electrical (Blender)	▪ Duplex outlet located underneath blender shelf
Insulation (Ice Bin)	▪ Foamed-in-place polyurethane
Faucet	▪ 4" Center wall or deck mount faucet with 1/4 turn ceramic cartridge valves
Backsplash	▪ 6-1/2"H x 1-1/2"D
Side Splash	▪ Included when Ice Bin is adjacent to Blender Dump Sink
Legs	▪ 1-5/8" tubular 16 gauge stainless steel legs with grey plastic bullet foot

Optional Accessories

Model	Description	Model	Description
KR-101	Condiment Tray	SC"XX"H	Partial Sliding Cover for Ice Bin ("XX" denotes size of Ice Bin)
KR-103	Stainless Steel Divider	SC"XX"F	Full Sliding Cover for Ice Bin ("XX" denotes size of Ice Bin)
KR-313	Left and Right Side Splash	KR-501	Towel Ring
KR-314	Right End Splash	30-160	Perforated Dump Basket
KR-315	Left End Splash	KR-806	Upgrade: 6" Longer Stainless Steel Legs



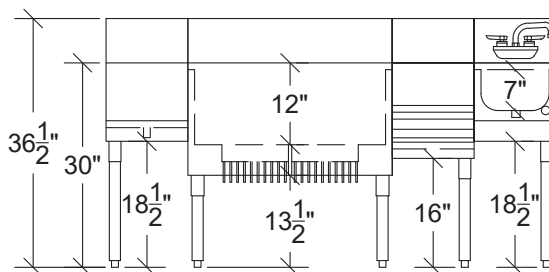
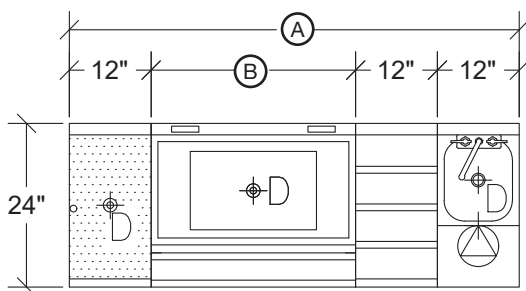
Model: _____ Item #: _____ Date: _____

Project: _____ Qty: _____ Approved By: _____

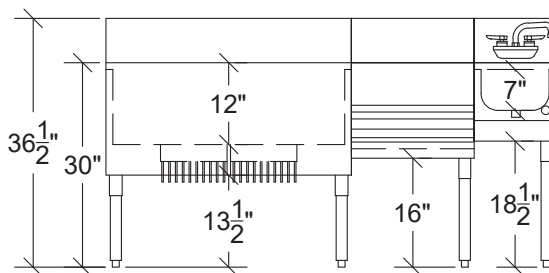
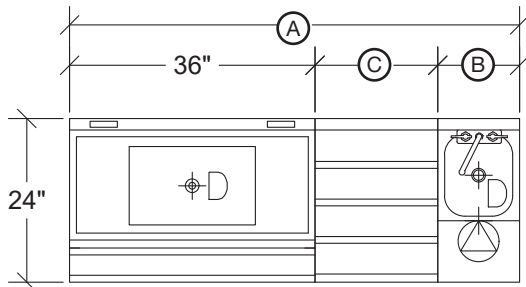
60" - 72" Workstations with Liquor Displays

Royal Series Underbar

Model	Overall Length Ⓐ	Ice Bin Length Ⓑ	Blender Dump Sink Length	Drainboard Length	Liquor Display Length	Ice Capacity (lbs.)	Cold Plate Circuits	Weight (lbs.)
KR24-W60C-10	60"	24"	12"	12"	12"	74	10 circuit	262
KR24-W66C-10	66"	30"	12"	12"	12"	92	10 circuit	289
KR24-W72C-10	72"	36"	12"	12"	12"	110	10 circuit	312



Model	Overall Length Ⓐ	Ice Bin Length	Blender Dump Sink Length Ⓑ	Liquor Display Length Ⓒ	Ice Capacity (lbs.)	Cold Plate Circuits	Weight (lbs.)
KR24-W60D-10	60"	36"	12"	12"	110	10 circuit	273
KR24-W66D-10	66"	36"	12"	18"	110	10 circuit	302
KR24-W72D-10	72"	36"	18"	18"	110	10 circuit	330



Model	Overall Length Ⓐ	Ice Bin Length	Blender Dump Sink Length Ⓑ	Liquor Display Length Ⓒ	Ice Capacity (lbs.)	Cold Plate Circuits	Weight (lbs.)
KR24-W60E-10	60"	24"	12"	12"	92	10 circuit	304
KR24-W66E-10	66"	24"	12"	18"	92	10 circuit	337
KR24-W72E-10	72"	24"	18"	18"	92	10 circuit	369

