



**John
BOOS**
Since 1887

ITEM #: _____ QTY: _____
MODEL #: _____
PROJECT NAME: _____

041221

3601 S. Banker St. Effingham, IL 62401 • Ph: (888) 431-2667 • Fax: (800) 433-2667

"UBS4-18" UNDERBAR 4 COMPARTMENT SINK



SLIM-LINE, 18" WIDTH

STANDARD FEATURES:

- ALL 18 GAUGE STAINLESS STEEL CONSTRUCTION
- TYPE 300 STAINLESS STEEL WITH #4 POLISH, SATIN FINISH
- SLIM LINE 18" DEEP FRONT TO BACK
- STANDARD PRE-DRILLED HOLES ON SIDES FOR ATTACHING ADJACENT UNITS TOGETHER
- REMOVABLE FAUCET PLATES WITH 4" ON-CENTER SPLASH MOUNT FAUCET HOLES
- REMOVABLE PERFORATED DRAINBOARD INSERTS FOR INCREASED AIR CIRCULATION
- CREASED DRAINBOARDS FOR IMPROVED DRAINAGE
- STAINLESS STEEL FRONT TO BACK BRACING



UBS4-1872-2D12

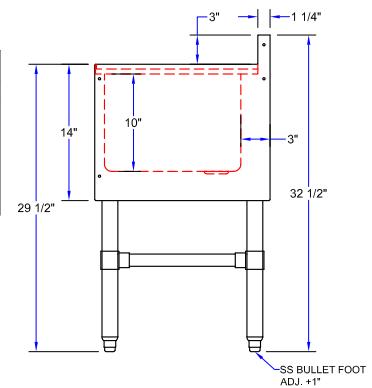
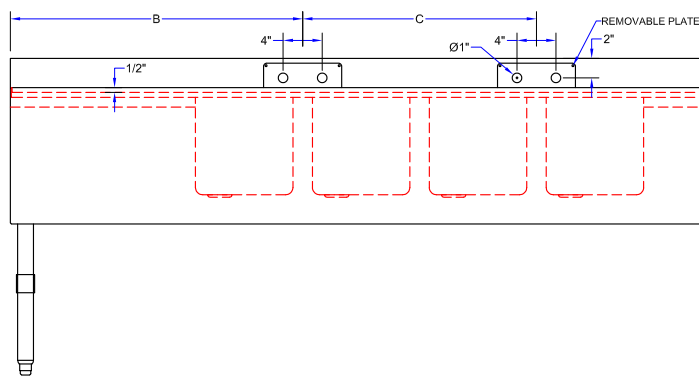
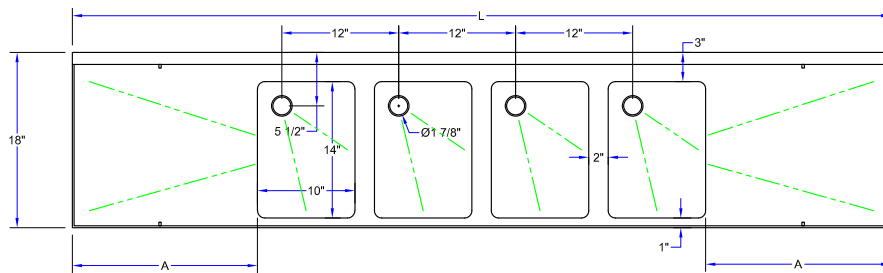
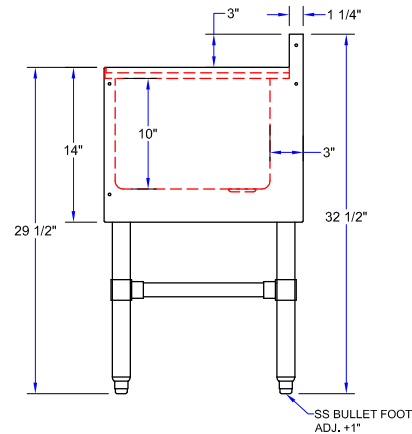
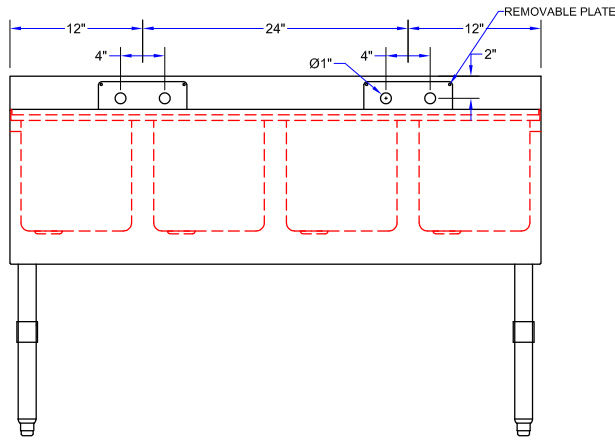
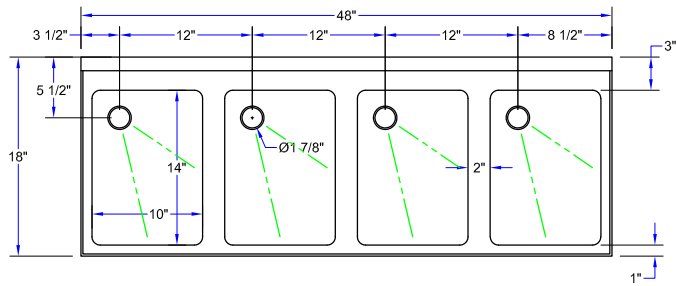
SPECIFICATIONS:

- MATERIALS
 - TOP: 18 GAUGE TYPE 300 STAINLESS STEEL
 - FRONT APRON: 18 GAUGE TYPE 300 STAINLESS STEEL
 - BACKSPLASH: 18 GAUGE TYPE 300 STAINLESS STEEL
 - SIDES: 18 GAUGE TYPE 300 STAINLESS STEEL
- SINK BOWL
 - FABRICATED SINK BOWL: 14" X 10" X 10" DEEP
- LEGS AND BRACING
 - BOLT ON 1-5/8" STAINLESS STEEL LEGS FOR FAST INSTALLATION
 - 1-1/4" FRONT TO BACK BRACING
 - 1" ADJUSTABLE STAINLESS STEEL BULLET FEET
- MOUNTING OPTIONS
 - Z-CLIP TO MOUNT TO WALL
 - BOLT TO ADJACENT UNDERBAR PIECE
 - MOUNTING OPTIONS ALLOW FOR FLEXIBLE INSTALLATION OPTIONS TO REMOVE BACK OR FRONT AND BACK LEGS FOR A CLEAN INSTALLATION
- PLUMBING
 - 1-7/8" DRAIN WITH BASKET
 - 1-1/2" NPS DRAIN CONNECTION
- NSF CERTIFIED

ACCESSORIES	DESCRIPTION
UBSS-18-L	SLIM-LINE LEFT HAND SIDE SPLASH
UBSS-18-R	SLIM-LINE RIGHT HAND SIDE SPLASH
PBF-4SM2-10LF	HEAVY DUTY FAUCET
PBF-W2-10LF	ECONOMY FAUCET
PB-WL-36	FLEXIBLE SHALLOW MOUNT FAUCET HOSES

4 COMPARTMENT SINK - SLIM-LINE, 18" WIDTH

MODEL #	SIZE (LXWXH)	LENGTH (L)	DRAINBOARD (A)	B	C	WT. (LBS)
UBS4-1848	48"X18"X32-1/2"	48"	-	-	-	75
UBS4-1872-2D12	72"X18"X32-1/2"	72"	2X12"	24"	24"	104
UBS4-1884-2D18	84"X18"X32-1/2"	84"	2X18"	30"	24"	106
UBS4-1896-2D24	96"X18"X32-1/2"	96"	2X24"	36"	24"	128



4 COMPARTMENT SINK - SLIM-LINE, 18" WIDTH

MODEL #	SIZE (LXWXH)	LENGTH (L)	DRAINBOARD (A)	B	C	WT. (LBS)
UBS4-1848	48"X18"X32-1/2"	48"	-	-	-	75
UBS4-1872-2D12	72"X18"X32-1/2"	72"	2X12"	24"	24"	104
UBS4-1884-2D18	84"X18"X32-1/2"	84"	2X18"	30"	24"	106
UBS4-1896-2D24	96"X18"X32-1/2"	96"	2X24"	36"	24"	128

SOME UNITS SHIP UNASSEMBLED FOR REDUCED SHIPPING COST. ALL DIMENSIONS ARE TYPICAL. TOLERANCE +/- .500"

John Boos & Co. is constantly engaged in a program of improving products and therefore reserves the right to change specifications without prior notice.

