



ITEM #: _____ QTY: _____
 MODEL #: _____
 PROJECT NAME: _____

072117

3601 S. Banker St. Effingham, IL 62401 • P.O. BOX 609 • Ph: (888) 431-2667 • Fax: (800) 433-2667

"WCH" CABINETS - STAINLESS STEEL
W/ HINGED DOORS

FEATURES:

- TYPE 300 STAINLESS STEEL W/ #4 POLISH SATIN FINISH
- INCLUDES FIXED SHELF
- (2) - SWINGING DOORS W/ INTEGRAL HANDLES
- MOUNTING RAIL ON TOP BACK FOR EASE OF MOUNTING TO WALL



CONSTRUCTION:

- CABINET: STAINLESS STEEL CABINET TIG WELDED, EXPOSED WELDS ARE POLISHED TO MATCH ADJACENT SURFACE

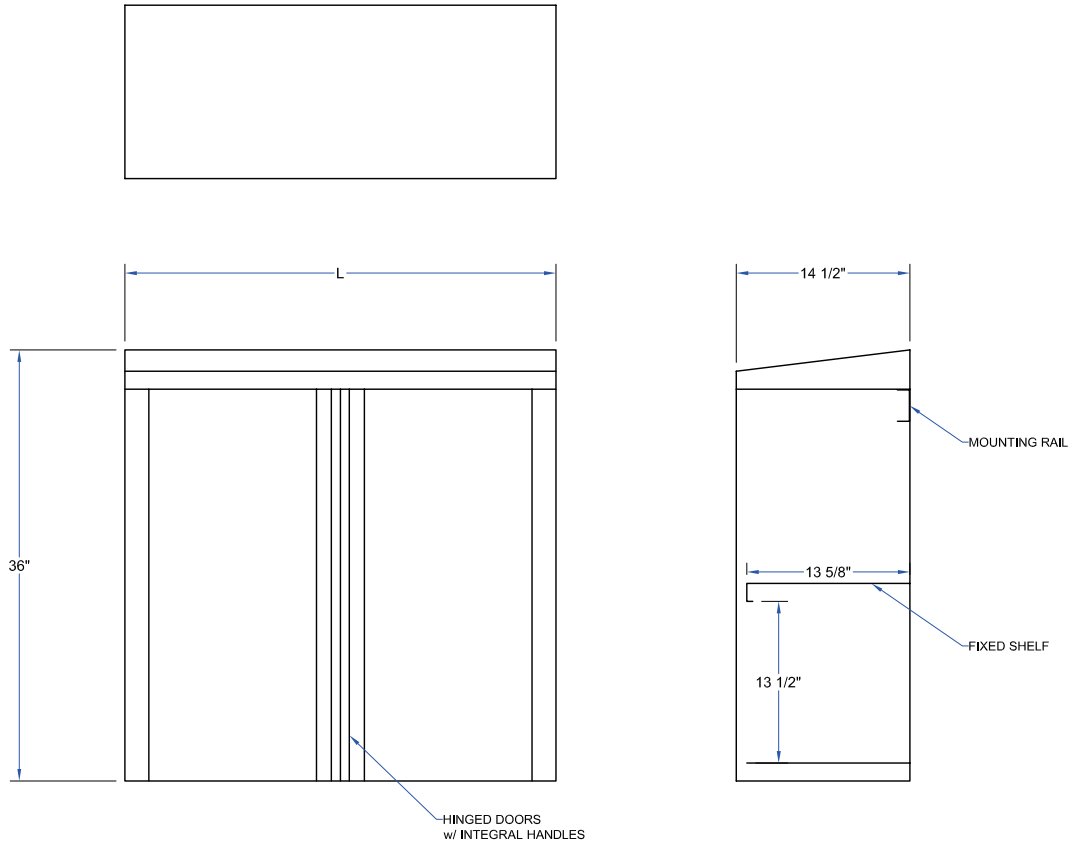
MATERIAL:

- 18 GAUGE TYPE 300 STAINLESS STEEL W/ #4 POLISH, SATIN FINISH

CABINETS - STAINLESS STEEL

MODEL #	QTY
WCH-36	
WCH-48	

DETAILED SPECIFICATIONS



CABINETS - STAINLESS STEEL

MODEL #	MOUNT TYPE	DESIGN	LENGTH	WEIGHT (LBS)
WCH-36	WALL	ENCLOSED W/ HINGED DOORS & SINGLE INTERMEDIATE SHELF	36"	72
WCH-48	WALL	ENCLOSED W/ HINGED DOORS & SINGLE INTERMEDIATE SHELF	48"	96

SOME UNITS SHIP UNASSEMBLED FOR REDUCED SHIPPING COST. ALL DIMENSIONS ARE TYPICAL. TOLERANCE +/- .500"
 John Boos & Co. is constantly engaged in a program of improving products and therefore reserves the right to change specifications without prior notice.



Boos
lock

AQ AutoQuotes

3601 S. Banker St. • Effingham, IL 62401 • PO BOX 609 • quotes@johnboos.com

www.johnboos.com

080917

845