



**John
BOOS**
Since 1887

ITEM #: _____ QTY: _____
 MODEL #: _____
 PROJECT NAME: _____

121917

3601 S. Banker St. Effingham, IL 62401 • P.O. BOX 609 • Ph: (888) 431-2667 • Fax: (800) 433-2667

"HNS" MAPLE TOP WORK TABLES



1-3/4" THICK HARD ROCK MAPLE FLAT TOP WITH GALVANIZED BASE & ADJUSTABLE UNDERSHELF

FEATURES:

- 1-3/4" THICK HARD MAPLE TOP, STYLE "SC" FLAT TOP
- MAPLE TOP IS FINISHED WITH PENETRATING OIL WITH OPTIONAL NATURAL CLEAR VARNIQUE FINISH (VARNIQUE FINISH VOIDS NSF.)
- GALVANIZED BASE AND ADJUSTABLE UNDERSHELF
- ADJUSTABLE BULLET FEET
- SHIPPED KNOCKED-DOWN, EASY-TO-ASSEMBLE
- NSF CERTIFIED



MATERIAL:

- TOP: NORTHERN HARD ROCK MAPLE
- LEGS: 16 GAUGE GALVANIZED STEEL
- UNDERSHELF: 18 GAUGE GALVANIZED STEEL (6' TABLES COME WITH 16 GAUGE GALVANIZED STEEL.)
- GUSSETS: GALVANIZED STEEL
- FEET: 1" ADJUSTABLE GALVANIZED STEEL

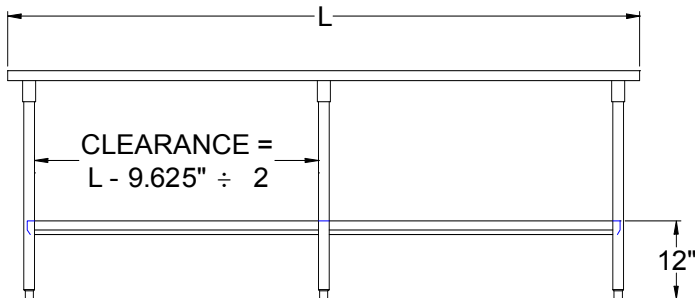
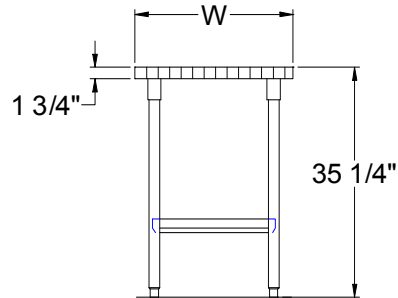
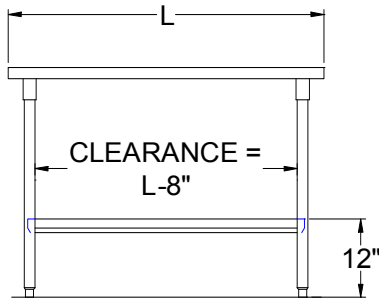
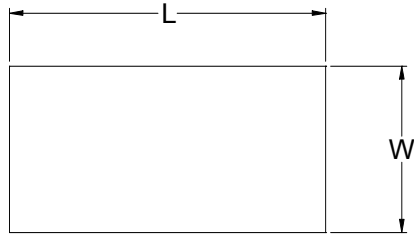
OPTIONAL ACCESSORIES

DESCRIPTION	MODEL	QTY
DRAWER		
DRAWER LOCK		
CASTERS		
OVERSHELVES		
POT RACK		

MAPLE TOP WORK TABLES

24" WIDE	QTY	30" WIDE	QTY	36" WIDE	QTY
HNS01		HNS08		HNS15	
HNS02		HNS09		HNS16	
HNS03		HNS10		HNS17	
HNS04		HNS11		HNS18	
HNS05		HNS12		HNS19	
HNS06		HNS13		HNS20	
HNS06A		HNS13A		HNS20A	
HNS07		HNS14		HNS21	

DETAILED SPECIFICATIONS



- UNITS 7 FT. AND LARGER ARE FURNISHED WITH SIX LEGS.
- FINISHED SIZE OF UNDERSHELF.
SHELF LENGTH = LENGTH MINUS 4.875"
SHELF WIDTH = WIDTH MINUS 4.25"

MAPLE TOP WORK TABLES

LENGTH	24" WIDE	WT. (LBS)	30" WIDE	WT. (LBS)	36" WIDE	WT. (LBS)
36"	HNS01	74	HNS08	90	HNS15	102
48"	HNS02	94	HNS09	115	HNS16	130
60"	HNS03	115	HNS10	139	HNS17	159
72"	HNS04	142	HNS011	168	HNS18	198
84"	HNS05	160	HNS112	200	HNS19	220
96"	HNS06	183	HNS13	222	HNS20	252
108"	HNS06A	196	HNS13A	240	HNS20A	274
120"	HNS07	215	HNS14	264	HNS21	302

SOME UNITS SHIP UNASSEMBLED FOR REDUCED SHIPPING COST. ALL DIMENSIONS ARE TYPICAL. TOLERANCE +/- .500"
John Boos & Co. is constantly engaged in a program of improving products and therefore reserves the right to change specifications without prior notice.



Boos
lock

AQ AutoQuotes

3601 S. Banker St. • Effingham, IL 62401 • PO BOX 609 • quotes@johnboos.com

www.johnboos.com

011218

389