



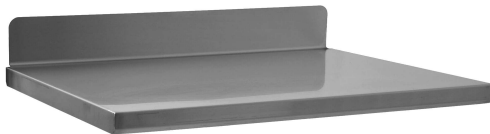
Profit from the Eagle Advantage®

Specification Sheet

Item No.: _____
 Project No.: _____
 S.I.S. No.: _____



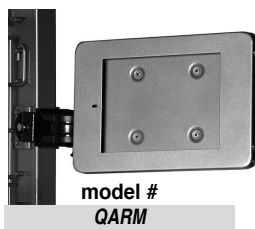
description	model #
one 6" (152mm)-tall drawer	QDRAWER-1
two 3" (76mm)-tall drawers	QDRAWER-2



length in. mm	24" (610mm)		30" (762mm)	
	-WIDE	model #	-WIDE	model #
24" 610		Q2436T		Q3036T
30" 762		Q2430T		Q3030T
36" 914		Q2436T		Q3036T
42" 1067		Q2442T		Q3042T
48" 1219		Q2448T		Q3048T
54" 1372		Q2454T		Q3054T
60" 1524		Q2460T		Q3060T
72" 1828		Q2472T		Q3072T



length in. mm	model #	length	
		in. mm	model #
24" 610	Q36VL	48" 1219	Q48VL
30" 762	Q30VL	54" 1372	Q54VL
36" 914	Q36VL	60" 1524	Q60VL
42" 1067	Q42VL	72" 1828	Q72VL



model #
QARM

Q-LEVER® Accessories

Drawers

- Stainless steel construction.
- Choice of two 3" (76mm) tall drawers, or one 6" tall drawer.
- Screws into existing holes in underside of Q-LEVER® workstation top.
- Precision steel ball bearing drawer slides for medium-duty applications.
- Drawer profile features an easy to operate disconnect finger release trigger.
- Load capacity is 100 lbs. (45 kg).

Tabletops

- Heavy gauge polished stainless steel construction.
- 4½" (114mm) backsplash.
- Square edges turned down 90°, with 30° kick in the front.
- Reinforced with hat channel construction underneath.
- Channel construction provides holes to accept drawers.
- Tabletops are removable.

Overhead Lights

- Overhead light shelf is powder-coated Valu-Master® gray.
- Dimmable light fixture is powder white.
- Built-in ON/OFF switch with a high/low output option.
- Color temp = Warm White
- Power cord is 78" (1981mm) in length.
- Adjustable on Q-LEVER® uprights.

Flat Panel Monitor Arm

- Plated powder-coated black.
- Pivots left-to-right, adjustable on Q-LEVER® uprights, can be mounted on either side of upright.
- Universal VESA mount—100 x 100mm and 75 x 75mm hole pattern—accepts all flat pattern monitors 10" to 30".
- Has internal area for internal cable management for neatness.
- Weight capacity is 14 lbs. (6.4 kg).

EAGLE GROUP
 100 Industrial Boulevard
 Clayton, DE 19938-8903 USA
 Phone: 302-653-3000 • 800-441-8440
 Fax: 302-653-2065
 www.eaglegrp.com • www.eaglemhc.com



For custom configuration or fabrication needs, contact our **SpecFAB® Division**.
 Phone: 302-653-3000 • Fax: 302-653-2065 • e-mail: quotes@eaglegrp.com

EG01.63 Rev. 06/21

Spec sheets available for viewing, printing or downloading from our online literature library at www.eaglegrp.com



Item No.: _____
 Project No.: _____
 S.I.S. No.: _____

Q-LEVER® Accessories

Power Strips

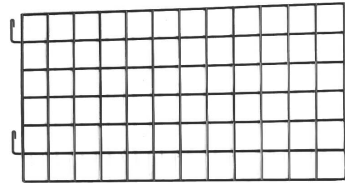
- Power strip is powder-coated black, mount is powder-coated Valu-Master® gray.
- 120-volt, NEMA 5-15P.
- Outlets are placed at right angle to accommodate bulky transformers.
- Comes with a 15' AC power cord.
- Lighted power switch confirms power ON/OFF status.
- Snap-in switch guard prevents accidental turnoff.
- Uses a 15-amp circuit breaker.
- Adjustable on Q-LEVER® uprights.



length		model #	length		model #
in.	mm		in.	mm	
24"	610	Q36VP	48"	1219	Q48VP
30"	762	Q30VP	54"	1372	Q54VP
36"	914	Q36VP	60"	1524	Q60VP
42"	1067	Q42VP	72"	1828	Q72VP

Wall Grids

- Wires are 2-gauge mild steel, crisscrossed to create a 3" x 3" mesh.
- Easily hooks onto uprights without the need for tools.
- Holds wall mat accessories.
- Valu-Master® gray epoxy finish.



height x length		model #
in.	mm	
18" x 36"	457 x 914	Q1836VW
18" x 48"	457 x 1219	Q1848VW
18" x 60"	457 x 1524	Q1860VW
30" x 36"	762 x 914	Q3036VW
30" x 48"	762 x 1219	Q3048VW

Hanger Rails

- Easily hooks onto uprights.
- Accommodates all accessories.
- Can be used as a backstop.
- Valu-Master® gray epoxy finish.



length		model #	length		model #
in.	mm		in.	mm	
24"	610	Q36VH	48"	1219	Q48VH
30"	762	Q30VH	54"	1372	Q54VH
36"	914	Q36VH	60"	1524	Q60VH
42"	1067	Q42VH	72"	1828	Q72VH

Supply Bins

- Made of durable polypropylene, providing longlasting years of service.
- Integral molded slots accept ID labels.



color	width x length x height		qty	model #
	in.	mm		
blue	5½" x 10½" x 5"	140 x 276 x 127	12	A203877
blue	11" x 10½" x 5"	279 x 276 x 127	6	A203879
blue	8½" x 14¾" x 7"	210 x 375 x 178	12	A203881
blue	16½" x 14¾" x 7"	419 x 375 x 178	6	A203883

Storage Baskets

- Easily attaches to hanger rail or side of wire shelf.
- Valu-Master® gray epoxy finish.



width x length x height		model #
in.	mm	
5" x 13½" x 7"	127 x 340 x 178	WB-V
7½" x 17¾" x 5"	191 x 441 x 127	WB-M-V
7½" x 17¾" x 10"	191 x 441 x 254	WB-L-V

EAGLE GROUP

100 Industrial Boulevard, Clayton, DE 19938-8903 USA
 Phone: 302-653-3000 or 800-441-8440 • Fax: 302-653-2065
 www.eaglegrp.com • www.eaglehmc.com

Printed in U.S.A.
 ©2021 by Eagle Group
 Rev. 06/21

Spec sheets available for viewing, printing or downloading from our online literature library at www.eaglegrp.com

Although every attempt has been made to ensure the accuracy of the information provided, we cannot be held responsible for typographical or printing errors. Information and specifications are subject to change without notice. Please confirm at time of order.