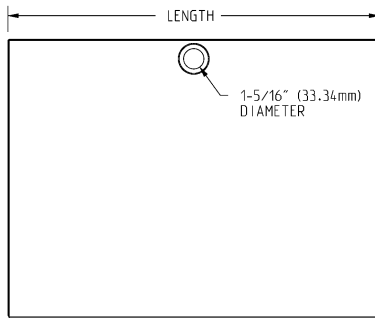


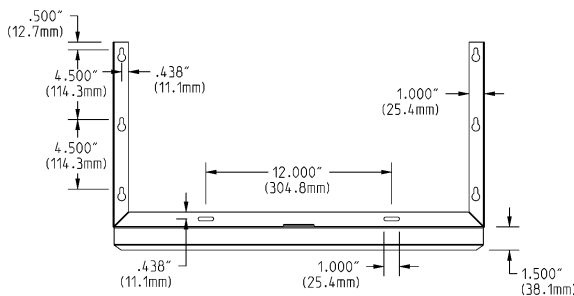
# Specification Sheet

## Short Form Specifications

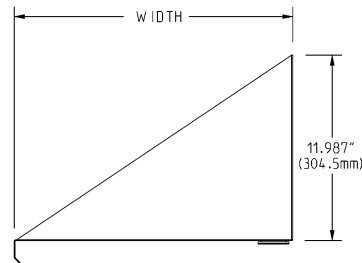
BlendPort Microwave Shelf, model \_\_\_\_\_.  
 Constructed of 18 gauge type 430 stainless steel, with a marine edge on front to prevent microwave from sliding forward.



TOP VIEW



FRONT VIEW



SIDE VIEW

model #	width		length		weight	
	in.	mm	in.	mm	lbs.	kg
<b>BPMWS-1824</b>	18"	457	24"	610	17	7.7
<b>BPMWS-2030</b>	20"	508	30"	762	18	8.2
<b>BPMWS-2424</b>	24"	610	24"	610	23	10.4

Item No.: \_\_\_\_\_  
 Project No.: \_\_\_\_\_  
 S.I.S. No.: \_\_\_\_\_

## Table Accessories— Microwave Shelves

### MODELS:

- BPMWS-1224**     **BPMWS-2030**     **BPMWS-2424**

### Design and Construction Features

- Space-saving wall mount design.
- Available in 18" x 24", 20" x 30", or 24" x 24" (457 x 610mm, 508 x 762mm, or 610 x 610mm) sizes.
- Heavy gauge stainless steel polished to #3 finish.
- Marine counter edge in front prevents microwave from sliding forward.
- Hole with black rubber grommet, centered at the rear of the shelf.