



Chef Tables - Stainless Steel Top

Stainless Steel Cabinet Base Tables - No Doors

Certifications:



Features:

- 1 5/8" x 6" Straight S/S Leg
- Legs Adjust 1" in Height
- 96" Units have a Center Mullion
- Extra Supporting "C" Channels
- Casters Available



Material:

- T-304 14 ga. Stainless Steel Top
- T-304 18 ga. Stainless Steel Body
- Stainless Steel Legs & Feet

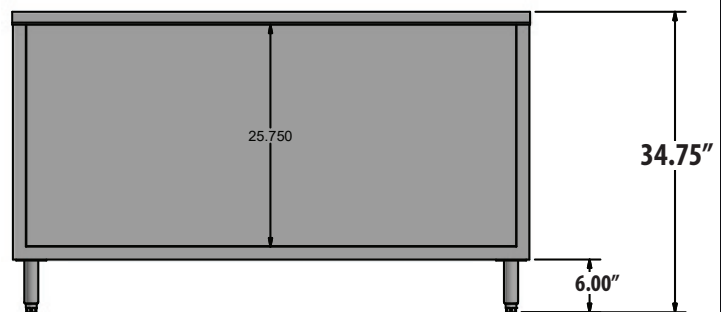
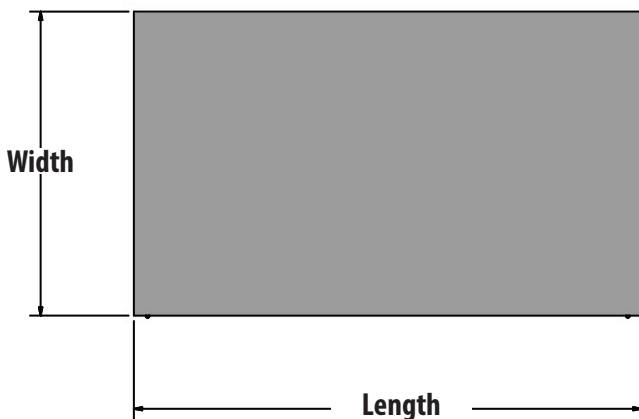
Options:

- Adjustable Shelf



Open Door	Unit Size (W x L x H)
CST-3648	36" x 48" x 34.75"
CST-3660	36" x 60" x 34.75"
CST-3672	36" x 72" x 34.75"
CST-3696*	36" x 96" x 34.75"

* Has a Center Mullion



PRODUCT DATA SHEET

BK RESOURCES

