

Product Specification Sheet

Model Style: KT24 - Chocolate



KT24 Chocolate Display Case/Showcases 42.95", 63.62" & 84.29" lengths, has (1) or (2) shelves (non-refrigerated), removable refrigerated stainless steel deck & self-contained, air cooled refrigeration. It features tempered double pane glass front & sides, tilt back front glass, incline display, clear plexiglass top support structure, rear plexiglass sliding doors, LED lighting & digital diagnostic controls with programmable defrosting. Styled with 304 high gloss stainless steel interior, silver anodized aluminum trim, chocolate service merchandiser, the showcase comes with factory standard, matte white front & side panels.

Model No.	Application	Description	Height	Length	Depth	Crated Weight	Voltage	Amps	HP
KT-RP2M-C-46-43	Chocolate	Humidity controlled 55%RH, one deck and one non refrigerated shelf	45.66"	42.95"	45.12"	723#	220/60/1	10	1/3 HP
KT-RP2M-C-53-43	Chocolate	Humidity controlled 55%RH, one deck and one two refrigerated shelves	53.15"	42.95"	45.12"	875#	220/60/1	10	1/3 HP
KT-RP3M-C-46-64	Chocolate	Humidity controlled 55%RH, one deck and one non refrigerated shelf	45.66"	63.62"	45.12"	934#	220/60/1	10	1/2 HP
KT-RP3M-C-53-64	Chocolate	Humidity controlled 55%RH, one deck and one two refrigerated shelves	53.15"	63.62"	45.12"	723#	220/60/1	10	1/2 HP
KT-RP4M-C-46-84	Chocolate	Humidity controlled 55%RH, one deck and one non refrigerated shelf	45.66"	84.29"	45.12"	875#	220/60/1	10	3/4 HP
KT-RP4M-C-53-84	Chocolate	Humidity controlled 55%RH, one deck and one two refrigerated shelves	53.15"	84.29"	45.12"	934#	220/60/1	10	3/4 HP
KT-RP30A-C-46-A&B	Curved Chocolate	Humidity controlled 55%RH, one deck and one non refrigerated shelf	45.66"	A & B	45.12"	723#	220/60/1	10	1/2 HP
KT-RP30A-C-53-A&B	Curved Chocolate	Humidity controlled 55%RH, one deck and one two refrigerated shelves	53.15"	A & B	45.12"	875#	220/60/1	10	1/2 HP
KT-RP30C-C-46-A&B	Curved Chocolate	Humidity controlled 55%RH, one deck and one non refrigerated shelf	45.66"	A & B	45.12"	934#	220/60/1	10	1/2 HP
KT-RP45A-C-46-A&B	Curved Chocolate	Humidity controlled 55%RH, one deck and one non refrigerated shelf	45.66"	A & B	45.12"	875#	220/60/1	10	1/2 HP
KT-RP45A-C-53-A&B	Curved Chocolate	Humidity controlled 55%RH, one deck and one two refrigerated shelves	53.15"	A & B	45.12"	934#	220/60/1	10	1/2 HP

Product Specification Sheet

Model Style: KT24 - Chocolate

Features

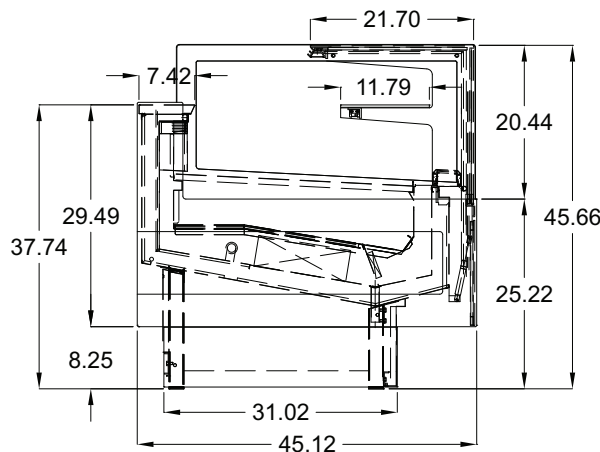
- All Clear Plexiglass Top Support Structure
- Tilt Back Front Glass
- All Tempered, Double Pane Glass Front and Sides
- Galvanized Steel Chassis Construction
- Insulated with Dense Non-CFCEcologic Polyurethane Foam
- Back and Inside Structure Made Of High Gloss 304 Stainless Steel
- Stainless Steel Work Surface
- Digital Diagnostic Control System with Programmable Defrosting
- Rear Plexiglass Sliding Doors
- Air-Cooled Condensing Unit
- Incline Display
- Unique Fan Assisted Airflow Design
- Removable Stainless Steel Deck

- Silver Anodized Aluminum Trim
- Stainless Steel Work Surface
- Back Painted Glass on Front Facia
- Refrigerated Deck, Non-Refrigerated Shelves
- Humidity Control System
- Multiplexing Capability
- Temperature Range: +50° to +57°

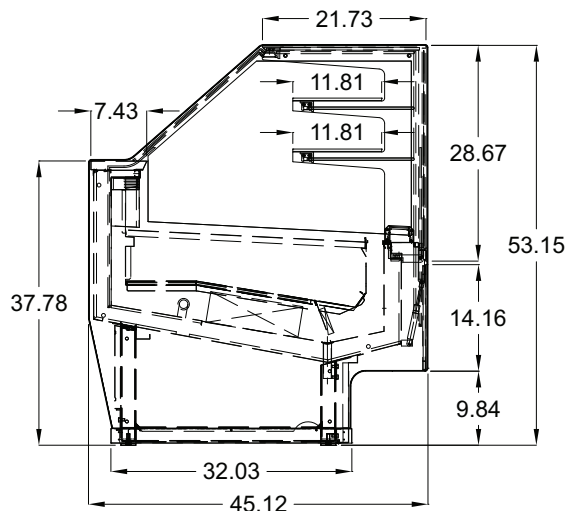
Optional Features

- Fully Refrigerated Showcase Option
- Available in Linear, 30 and 45 Degrees Profiles
- Casters
- Granite Work Surface (Operator Side)
- Remote Condensing Unit
- RAL Custom Color Options

**SIDE VIEW
45.66" Height
Detailed**



**SIDE VIEW
53.15" Height
Detailed**



Required ambient conditions: 75°F; 55% Relative Humidity
Drawings and Specification are subject to change without notice.

ELECTRICAL CONNECTION:

Display cases are shipped with applicable junction box for hardwired installation
Options exist for several NEMA configurations
Plug and/or receptacle configurations are at the discretion of the electrical installer



ORION by CLABO

HMC Enterprises LLC, 831 East Cayuga Street, Philadelphia, PA. 19124 Ph: 1-800-344-8222 • 215-464-6800 • www.ORIONbyClabo.com

Revised 10/2018

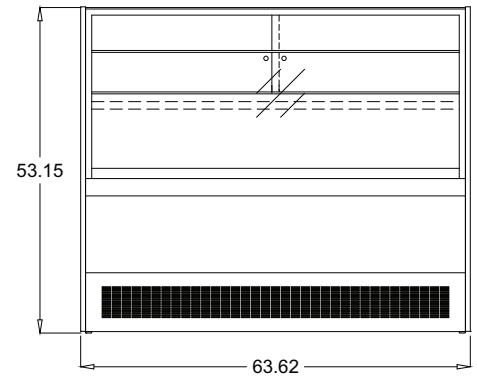
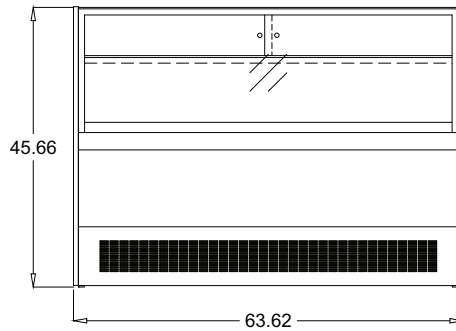
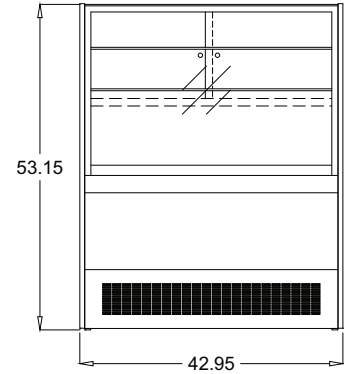
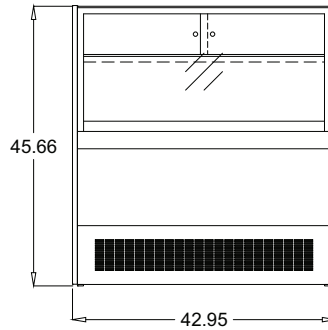
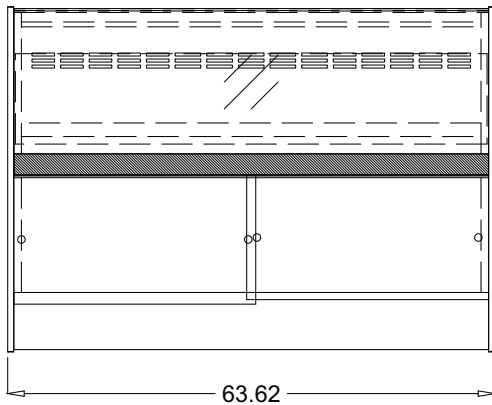
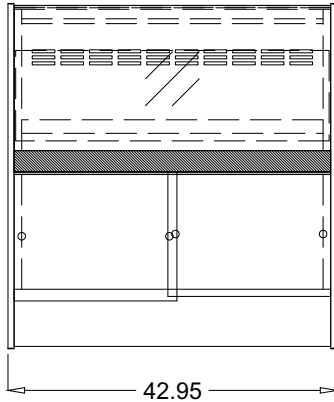
Product Specification Sheet

Model Style: KT24 - Chocolate

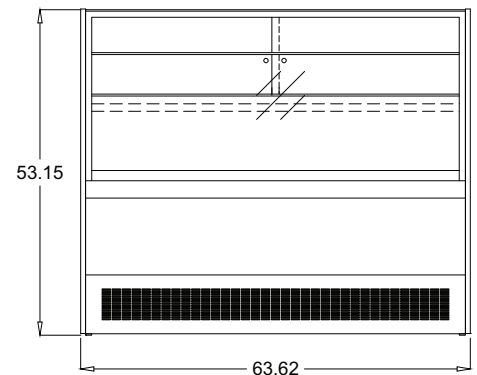
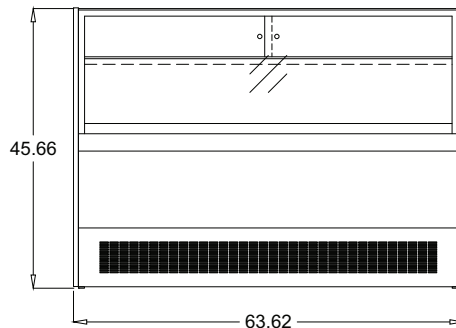
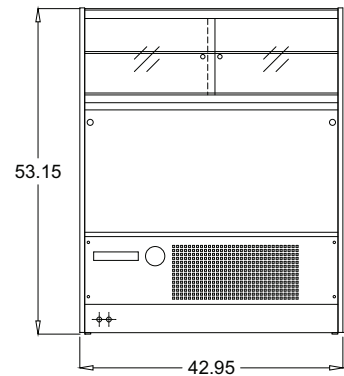
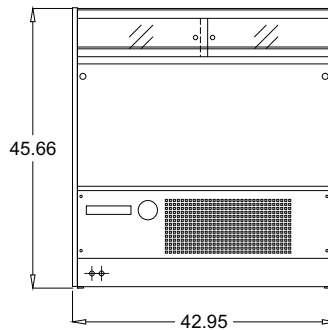
42.95", 63.62" Length Plan & Design Views

FRONT VIEWS

PLAN VIEWS



REAR VIEWS



ORION by CLABO

HMC Enterprises LLC, 831 East Cayuga Street, Philadelphia, PA. 19124 Ph: 1-800-344-8222 • 215-464-6800 • www.ORIONbyClabo.com

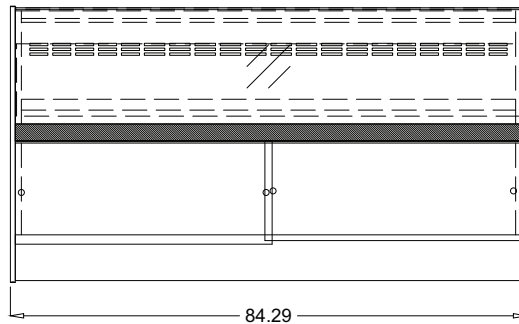
Revised 10/2018

Product Specification Sheet

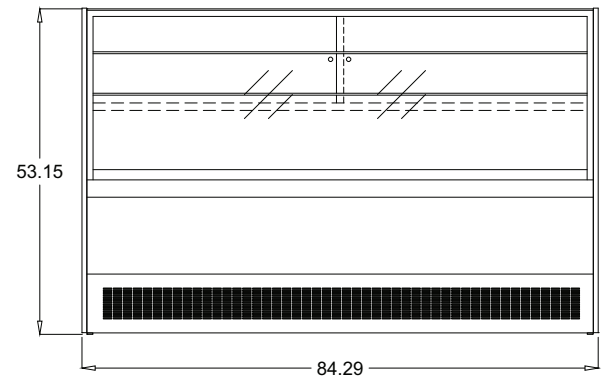
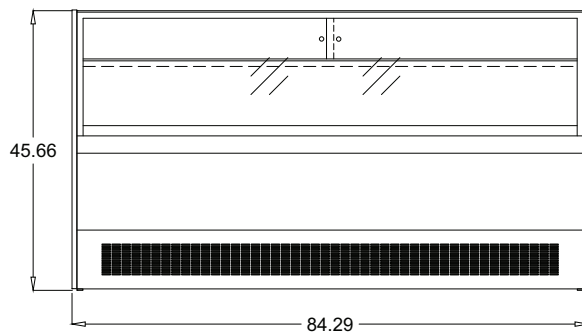
Model Style: KT24 - Chocolate

84.29 " Length Plan & Design Views

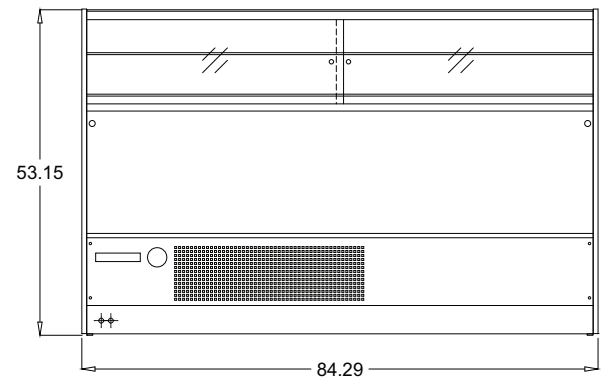
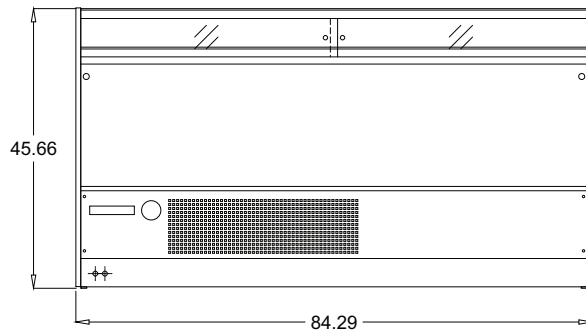
PLAN VIEWS



FRONT VIEWS

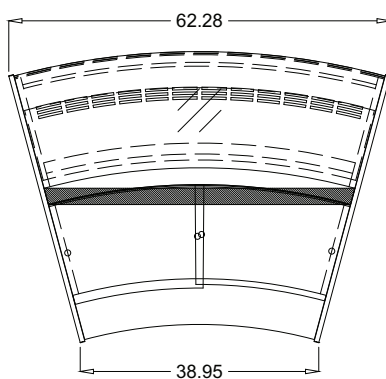


REAR VIEWS

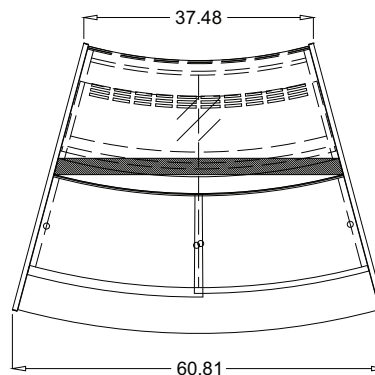


A30, C30 & A45 Design Views

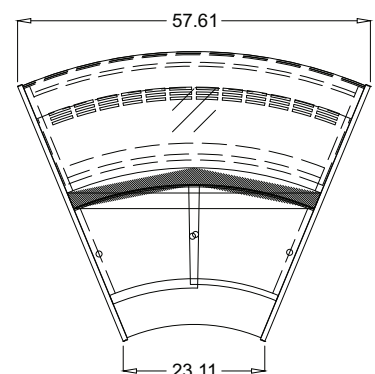
A30 Curved Unit



C30 Curved Unit



A45 Curved Unit



ORION by CLABO

HMC Enterprises LLC, 831 East Cayuga Street, Philadelphia, PA. 19124 Ph: 1-800-344-8222 • 215-464-6800 • www.ORIONbyClabo.com

Revised 10/2018