

Item# _____
Project: _____
Qty: _____

Back Bar Bottle Cooler

BB2-24-HC



BB3-24-HC



BB4-24-HC



BB2-24G-HC



BB3-24G-HC



BB4-24G-HC



Features

- CFC Free Refrigerant and Foam
- Electronic Thermostat and Digital LED Temperature Display for Accurate Control and Easy Reading
- Self-Closing Door
- Magnetic Gasket can be Replaced without any Tools
- Stainless Top
- INTERIOR: Powder-Coated Steel White, Bottom S/S 304
- EXTERIOR: Powder-Coated Steel Black
- Unit ships with 5" casters, not installed

Two Year - Parts & Labor on entire unit. Valid in United States
Three Year - Additional Compressor, Part Only



Serv-Ware
www.servware.com

Phone:(800).768.5953

Revised 6/18

Fax:(800).976.1299



Certified to ANSI/NSF 7

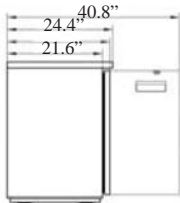
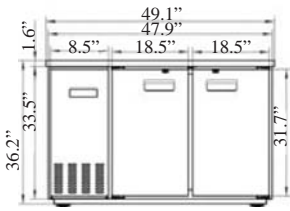
Item# _____

Project: _____

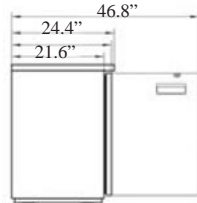
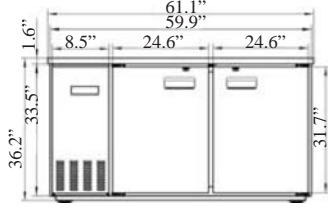
Qty: _____

Back Bar Bottle Cooler

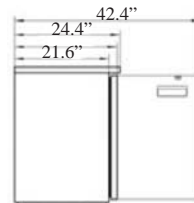
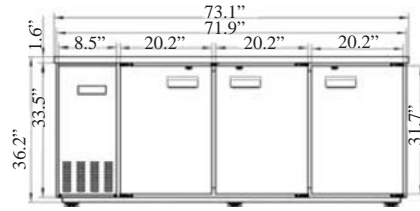
BB2-24-HC



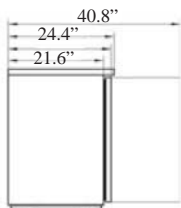
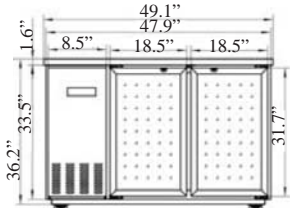
BB3-24-HC



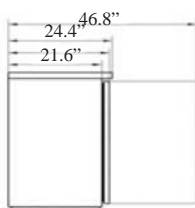
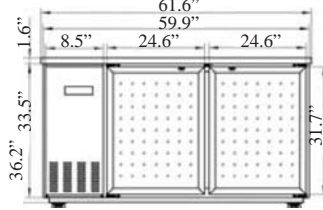
BB4-24-HC



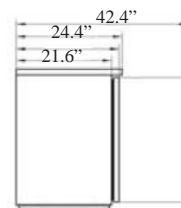
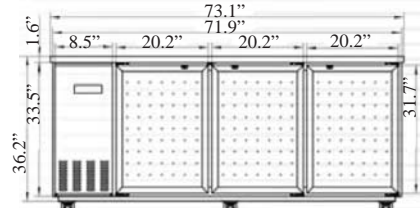
BB2-24G-HC



BB3-24G-HC



BB4-24G-HC



Serv-Ware

MODEL	EXTERNAL DIMENSION inch (W x D x H)	V/Hz/PhAMPS	AMPS	STORAGE CAPACITY Cu-ft	CAPACITY 12 OZ. BOTTLE / CAN	HP	TEMPERATURE	CERTIFICATION	WEIGHT / LBS. (Shipping)
BB2-24-HC	49.1" x 24.4" x 36.2"	115V/60Hz/1	4.5	10	9 ½ CASES / 11 ½ CASES	3/8	33°F – 41°F	UL/cUL	262
BB3-24-HC	61.1" x 24.4" x 36.2"	115V/60Hz/1	4.5	13.5	17 ½ CASES / 23 ¾ CASES	3/8	33°F – 41°F	UL/cUL	300
BB4-24-HC	73.1" x 24.4" x 36.2"	115V/60Hz/1	6.0	17.2	25 ¼ CASES / 34 ¾ CASES	3/8	33°F – 41°F	UL/cUL	348
BB2-24G-HC	49.1" x 24.4" x 36.2"	115V/60Hz/1	4.5	10	9 ½ CASES / 11 ½ CASES	3/8	33°F – 41°F	UL/cUL	297
BB3-24G-HC	61.1" x 24.4" x 36.2"	115V/60Hz/1	4.5	13.5	17 ½ CASES / 23 ¾ CASES	3/8	33°F – 41°F	UL/cUL	357
BB4-24G-HC	73.1" x 24.4" x 36.2"	115V/60Hz/1	6.0	17.2	25 ¼ CASES / 34 ¾ CASES	3/8	33°F – 41°F	UL/cUL	416



Serv-Ware
www.servware.com

Phone:(800).768.5953

Revised 6/18

Fax:(800).976.1299



Certified to ANSI/NSF 7