



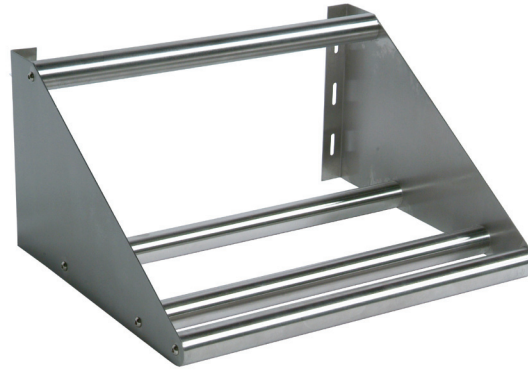
Tubular Dish Shelf

Stainless Steel Shelving



Use your smart phone to scan the above QR code to visit our website:
www.bk-resources.com

Certifications:



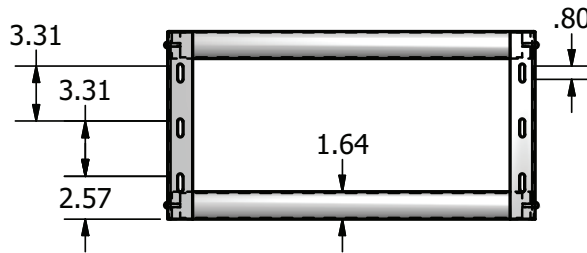
Features:

- 1-5/8" O.D. Stainless Tubing
- Slotted Mounting Holes For Easier Mounting

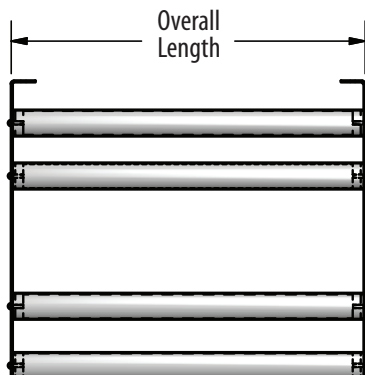
Material:

- T-304 18 ga. Stainless Steel

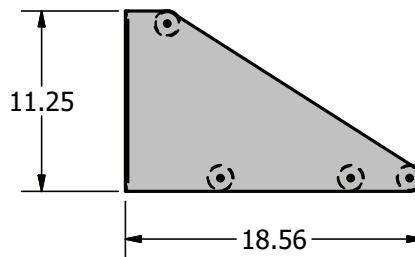
Part Number	Length	Unit Size (l x w x h)
BK-TSH-22	22"	22" x 18 9/16" x 11 1/4"
BK-TSH-42	42"	42" x 18 9/16" x 11 1/4"
BK-TSH-63	63"	63" x 18 9/16" x 11 1/4"



BK-TSH-XX
 FRONT VIEW
 Scale = 1:10



BK-TSH-XX
 TOP VIEW
 Scale = 1:10



BK-TSH-XX
 SIDE VIEW
 Scale = 1:10

PRODUCT DATA SHEET

BK RESOURCES

