



ATLAS METAL

1135 N.W. 159th DRIVE, MIAMI, FLORIDA 33169

TEL 305.625.2451

TOLL FREE 800.762.7565

FAX 305.623.0475

WWW.ATLASFOODSERV.COM

SALES@ATLASFOODSERV.COM

Project: _____

Item No.: _____

Quantity: _____

MODULAR UNITS INF SERIES



HOT FOOD UNIT
Electrically Heated
Single Control

- INFH-2
- INFH-3
- INFH-4
- INFH-5
- INFH-6

SPECIFICATIONS

TOP: Constructed of 16 gauge, type 304 stainless steel, die-formed, welded, ground and polished.

BODY: Frame construction shall be of hi-tensile stainless steel square tubing, 1-1/4" x 1-1/4". Frame sections are welded construction, ground and polished to a uniform finish. Front & end panel is constructed from 18 gauge stainless steel with 1/16" thick plastic laminate. Rear aprons is constructed from 16 gauge stainless steel with 1/16" thick plastic laminate finish. Owner to specify finish. And 18 gauge stainless steel removable undershelf is included. An integral locking device shall be provided to align and retain cart positioning when two or more carts are joined.

HOT FOOD PAN: The cart includes a WH series built-in hot pan, bain marie style, installed in the top. Constructed of 18 gauge, type 304 stainless steel, with raised perimeter bead and solid vinyl gasket. The pan is fully insulated with high density fiberglass insulation, 1" thick on all sides, 2" thick on the bottom and enclosed with a 22 gauge galvanized steel outer case. The interior liner is fabricated with 1/4" radius coved corners. A 3/4" dia. drain with strainer, 4" brass nipple and valve is provided. Embossed mounting lugs are provided, along the inner surface of top, to hold the removable separator channel(s) in place. Separator channel(s) to hold 12"x20" food pans are included.

ELECTRICAL: The unit is provided with 850 watt heating elements, pre-wired to a single thermostat control, with a pilot light. A 6' long, 3-wire cord and plug is provided, extending from the control box located under the unit, on the operator's left. Bottom of outer case can be removed for access to electrical components. Available in single phase power only.

CASTERS: The casters shall be 4" diameter, non-marking rubber tired, swivel type with ball bearings in both swivel and axle raceways, provided with grease fittings. Both casters on operator's side have toe activated brakes.

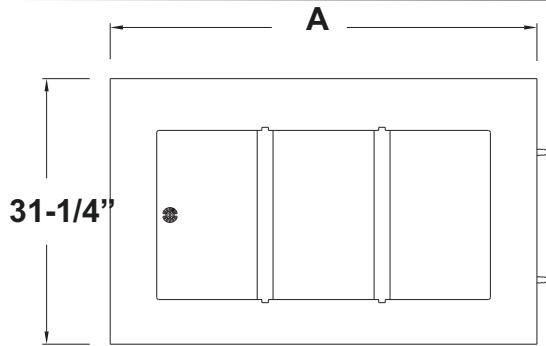
Specifications subject to change without notice.

STANDARD FEATURES

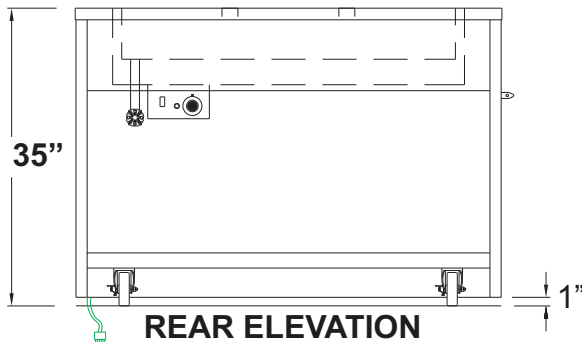
- Fully insulated to retain heat - open, bain marie construction with single thermostat control
- Positive self-locking device - keeps tops level and equipment in place
- Fully mobile - each unit is provided with 4" dia. swivel casters, two with brakes
- Versatile - available in a wide range of sizes and a wide variety of finishes and colors
- **US** - Undershelf, S/S, removable
- Wet or Dry Operation
- 1-Year Parts & Labor Warranty
- UL Listed

ACCESSORIES

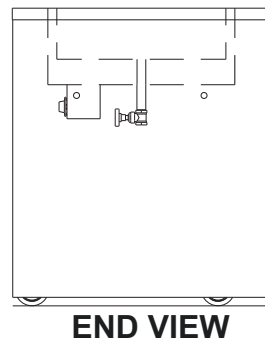
- **TS** - Tray Slide, 12" wide, S/S, solid, ribbed, fold-down
- **SH** - Work Shelf, 8" wide, S/S, fold-down
- **CB** - Work Shelf, 8" wide, hardwood maple, fold-down
- **CR** - Work Shelf, 8" wide, Richlite, fold-down
- **ES** - End Shelf, 16" wide, S/S, fold-down
- **CBE** - End Shelf, 16" wide, hardwood maple, fold-down
- **RPS** - Rear Sliding Doors, removable
- **HD** - Hinged Doors, S/S
- **DL** - Door Locks (set)(for **RPS** or **HD**)
- **Sneeze Guards** - various styles available (see sneeze guard section of catalog)
- **RC** - Round Cutout
- **CO** - Convenience Outlet (specify base or apron mount)
- **CO-DUP** - Convenience Outlet, Duplex receptacle
- **ERS** - Electrical Raceway System
- **PCS** - 7 to 10 ft. Power Cord
- **CW** - Cord Wrap
- **P-CAST** - Polyurethane Casters, 2-W/Brakes
- Stainless Steel Adapter Plates & Adapter Bars (pgs. DI-51 - DI-52)
- **CP** - Cover Plate with handles, S/S
- **RDVE** - Rear Drain valve extension for **DM** & **DMV** (1) required
- **AMC** - Apron mounted remote controls
- **MS** - Master on/off switch
- **AF** - Automatic water fill
- **Solid SurfaceTop**



PLAN VIEW



REAR ELEVATION



END VIEW

Electrical Characteristics

MODEL	WATTAGE	VOLTAGE/KW/AMPS	NEMA # PLUG
INFH-2	850WATT	120V - 1.7KW - 14.2	5-20P
		208V - 1.7KW - 8.2	6-15P
		240V - 1.7KW - 7.1	6-15P
	1000WATT	120V - 2.0KW - 16.7	5-30P
		208V - 2.0KW - 9.6	6-15P
		240V - 2.0KW - 8.3	6-15P
INFH-3	850WATT	120V - 2.55KW - 21.3	5-30P
		208V - 2.55KW - 12.3	L6-20P
		240V - 2.55KW - 10.6	6-15P
	1000WATT	120V - 3.0KW - 25.0	5-50P
		208V - 3.0KW - 14.4	L6-20P
		240V - 3.0KW - 12.5	L6-20P
INFH-4	850WATT	208V - 3.4KW - 16.4	L6-30P
		240V - 3.4KW - 14.2	L6-20P
	1000WATT	208V - 4.0KW - 19.2	L6-30P
		240V - 4.0KW - 16.7	L6-30P
INFH-5	850WATT	208V - 4.25KW - 20.4	L6-30P
		240V - 4.25KW - 17.7	L6-30P
	1000WATT	208V - 5.0KW - 24.0	L6-30P
		240V - 5.0KW - 20.8	L6-30P
INFH-6	850WATT	208V - 5.1KW - 24.5	6-50P
		240V - 5.1KW - 21.3	L6-30P
	1000WATT	208V - 6.0KW - 28.8	6-50P
		240V - 6.0KW - 25.0	6-50P

MODEL	"A"	FOOD WELLS	SHIP WT. (LBS)
INFH-2	36-1/4" (92cm)	2	190 (86.1kg)
INFH-3	50-1/4" (127cm)	3	242 (110kg)
INFH-4	64" (161.9cm)	4	294 (133.3kg)
INFH-5	77-3/4" (196.8cm)	5	346 (157kg)
INFH-6	91-1/2" (231.7cm)	6	416 (189kg)