

# 400-HW Series

## Waterless Hot Food Well

ALTO-SHAAM.

Unlike traditional steam tables or dry wells, waterless hot food wells from Alto-Shaam feature radiant Halo Heat® technology that evenly surrounds food without the use of extremely hot elements, added humidity or fans. Extend hold times, maintain food quality and reduce operating costs to maximize return on investment.



400-HW

### Standard Features

- Extend food holding times with efficient, precise Halo Heat® technology
- Maintain food quality without the use of extremely hot elements, added humidity or fans
- Increase sales with attractive food presentation and quality
- Reduce installation and operating costs with no water or plumbing needed
- Save on maintenance costs, eliminating lime and scale buildup associated with traditional steam tables
- Increase employee and customer safety with elimination of hot water and steam
- Provide optimal holding temperatures with an adjustable thermostat that can be flush-mounted into the counter or a location out of sight from customers
- Set ideal holding temperatures for any dish with an individual well control option
- HWLF models feature a large flange
- HWI and HWILF models are controlled by two [2] separate adjustable thermostats
- 400-HW/D4, 400-HW/D6, 400-HWLF/D4, and 400-HWLF/D6 models include eight [8] half/third-size divider bars and three [3] large pan divider bars
- 400-HWI/D4, 400-HWI/D6, 400-HWILF/D4, and 400-HWILF/D6 models include eight [8] half/third-size divider bars

### Configurations (select one)

- |                                       |                                       |
|---------------------------------------|---------------------------------------|
| <input type="checkbox"/> 400-HW/D4    | <input type="checkbox"/> 400-HW/D6    |
| <input type="checkbox"/> 400-HWLF/D4  | <input type="checkbox"/> 400-HWLF/D6  |
| <input type="checkbox"/> 400-HWI/D4   | <input type="checkbox"/> 400-HWI/D6   |
| <input type="checkbox"/> 400-HWILF/D4 | <input type="checkbox"/> 400-HWILF/D6 |

### Electrical

- |                               |                                    |
|-------------------------------|------------------------------------|
| <input type="checkbox"/> 120V | <input type="checkbox"/> 208V–240V |
| <input type="checkbox"/> 230V |                                    |

### Control box cord location

- |   |
|---|
| <input type="checkbox"/> Back, standard   |
| <input type="checkbox"/> Bottom, optional |

### Accessories (select all that apply)

- |   |
|---|
| <input type="checkbox"/> Pan divider bar—half-size/third-size [11318] |
| <input type="checkbox"/> Pan divider bar—full-size [16019]            |
| <input type="checkbox"/> Locking kit [5020849]                        |



- |           |                                   |
|-----------|-----------------------------------|
| <b>4</b>  | Four full-size or GN 1/1 pans     |
| <b>8</b>  | Eight half-size or GN 1/2 pans    |
| <b>12</b> | Twelve third-size or GN 1/3 pans  |
|           | D4: 96 lb [44 kg] product maximum |
|           | D4: 58 qt [56 L] volume maximum   |

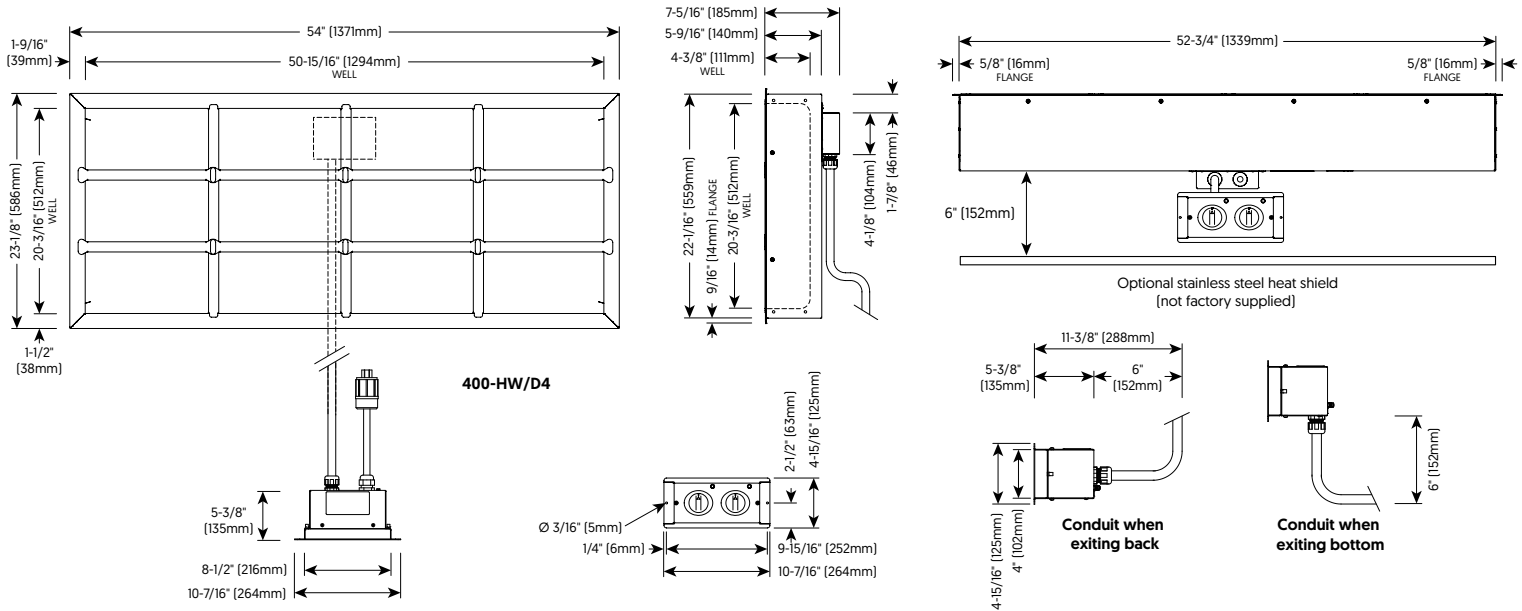


IP X3



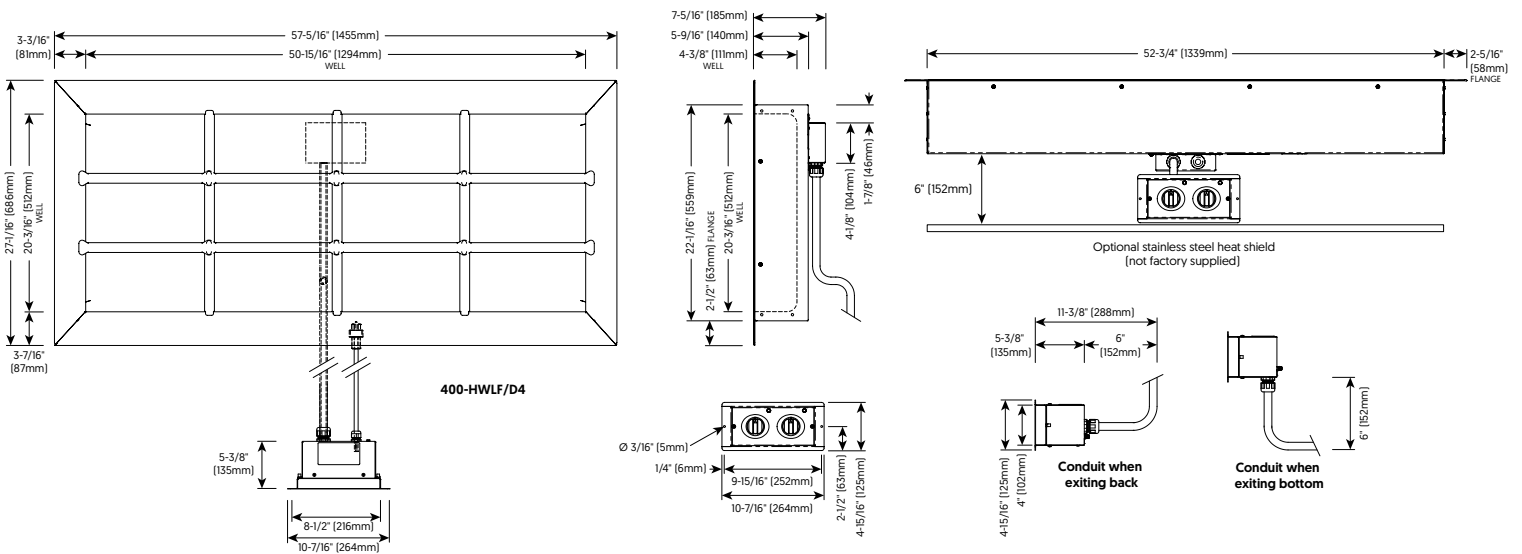
# 400-HW Series

## Specification



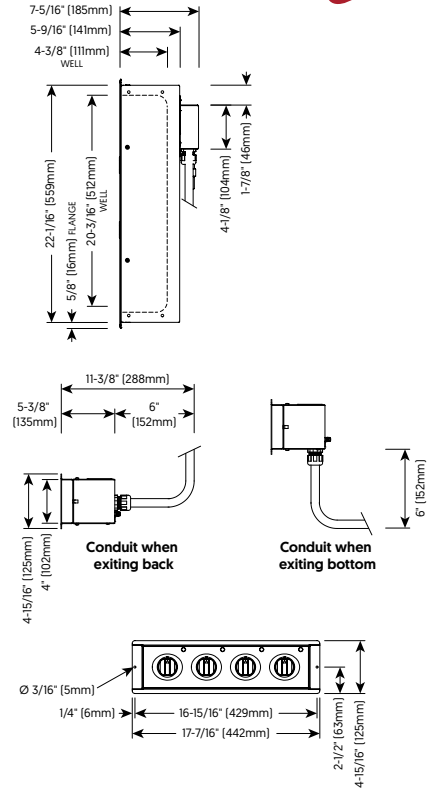
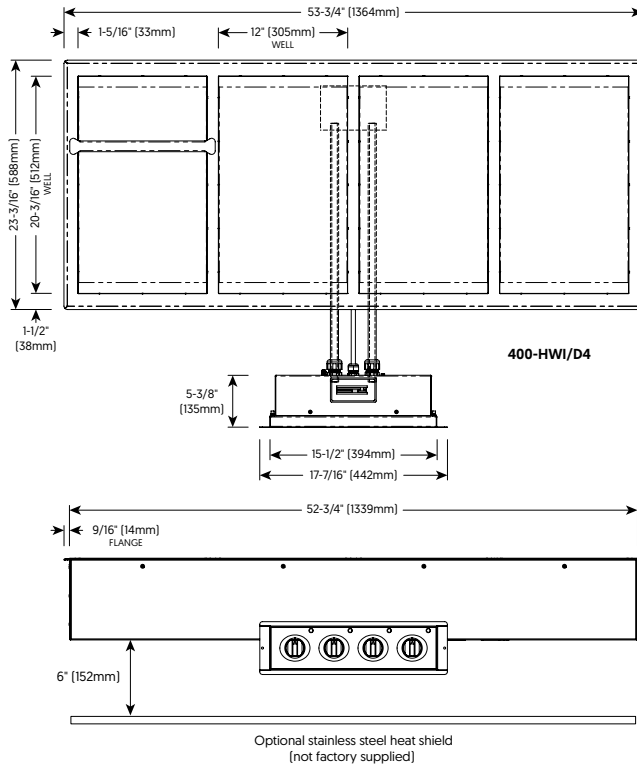
# 400-HWLF Series

## Specification



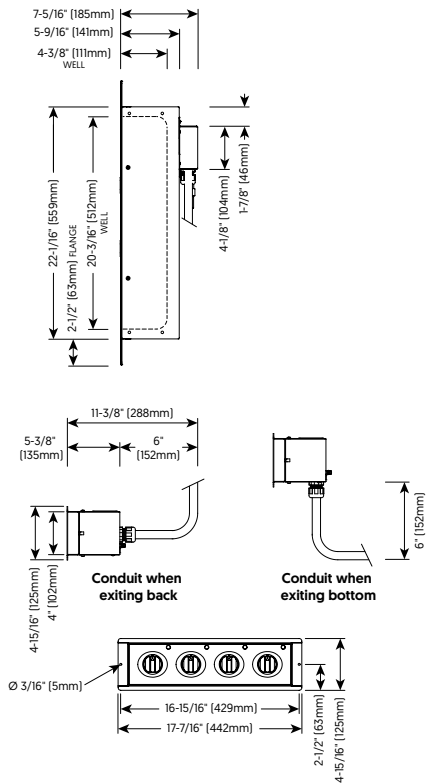
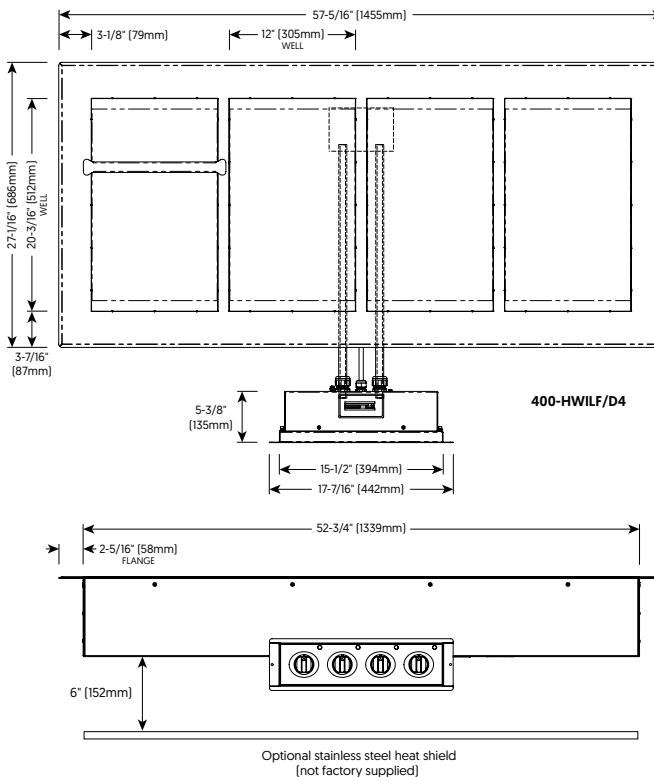
# 400-HWI Series

## Specification



# 400-HWILF Series

## Specification



# 400-HW Series



Model	Exterior (H x W x D)
400-HW/D4	7-5/16" x 54" x 23-1/8" [185mm x 1371mm x 586mm]
400-HW/D6	9-5/16" x 54" x 23-1/8" [235mm x 1371mm x 586mm]
400-HWLF/D4	7-5/16" x 57-5/16" x 27-1/16" [185mm x 1455mm x 686mm]
400-HWLF/D6	9-1/4" x 57-5/16" x 27-1/16" [234mm x 1455mm x 686mm]
400-HWI/D4	7-5/16" x 53-3/4" x 23-3/16" [185mm x 1364mm x 588mm]
400-HWI/D6	9-5/16" x 53-3/4" x 23-3/16" [235mm x 1364mm x 586mm]
400-HWILF/D4	7-5/16" x 57-5/16" x 27-1/16" [185mm x 1455mm x 686mm]
400-HWILF/D6	9-5/16" x 57-5/16" x 27-1/16" [225mm x 1455mm x 686mm]

Interior (H x W x D)
4-3/8" x 50-15/16" x 20-3/16" [111mm x 1294mm x 512mm]
6-3/8" x 50-15/16" x 20-3/16" [162mm x 1294mm x 512mm]
4-3/8" x 50-15/16" x 20-3/16" [111mm x 1294mm x 512mm]
6-3/8" x 50-15/16" x 20-3/16" [162mm x 1294mm x 512mm]
4-3/8" x 12" x 20-3/16" [111mm x 304mm x 512mm]
6-3/8" x 12" x 20-3/16" [162mm x 304mm x 512mm]
4-3/8" x 12" x 20-3/16" [111mm x 304mm x 512mm]
6-3/8" x 12" x 20-3/16" [162mm x 304mm x 512mm]

Model	Net Weight	Ship Weight**	Ship Dimensions (L x W x H)**
400-HW/D4	71 lb [32 kg]	125 lb [57 kg]	60" x 34" x 15" [1524mm x 864mm x 381mm]
400-HW/D6	79 lb [36 kg]	166 lb [75 kg]	60" x 34" x 15" [1524mm x 864mm x 381mm]
400-HWLF/D4	75 lb [34 kg]	160 lb [73 kg]	60" x 34" x 15" [1524mm x 864mm x 381mm]
400-HWLF/D6	83 lb [38 kg]	110 lb [50 kg]	60" x 34" x 15" [1524mm x 864mm x 381mm]
400-HWI/D4	90 lb [41 kg]	180 lb [82 kg]	60" x 34" x 15" [1524mm x 864mm x 381mm]
400-HWI/D6	101.5 lb [46 kg]	150 lb [68 kg]	60" x 34" x 15" [1524mm x 864mm x 381mm]
400-HWILF/D4	96.5 lb [44 kg]	166 lb [75 kg]	60" x 34" x 15" [1524mm x 864mm x 381mm]
400-HWILF/D6	108 lb [49 kg]	150 lb [68 kg]	60" x 34" x 15" [1524mm x 864mm x 381mm]

\*\*Domestic ground shipping information. Contact factory for export weight and dimensions.

## Cutout Dimensions

Model	Non-combustible Surface Cutout (L x W)	Combustible Surface Cutout (L x W)^	Control Box Cutout (H x W x D)*
400-HW/D4	52-15/16" x 22-1/8" [1345mm x 562mm]	---	4-1/4" x 8-3/4" x 11-3/8" [108mm x 222mm x 288mm]
400-HW/D6	52-15/16" x 22-1/8" [1345mm x 562mm]	---	4-1/4" x 8-3/4" x 11-3/8" [108mm x 222mm x 288mm]
400-HWLF/D4	52-15/16" x 22-1/8" [1345mm x 562mm]	54-7/8" x 24-1/8" [1394mm x 613mm]	4-1/4" x 8-3/4" x 11-3/8" [108mm x 222mm x 288mm]
400-HWLF/D6	52-15/16" x 22-1/8" [1345mm x 562mm]	54-7/8" x 24-1/8" [1394mm x 613mm]	4-1/4" x 8-3/4" x 11-3/8" [108mm x 222mm x 288mm]
400-HWI/D4	52-15/16" x 22-1/8" [1345mm x 562mm]	---	4-1/4" x 15-3/4" x 11-3/8" [108mm x 222mm x 288mm]
400-HWI/D6	52-15/16" x 22-1/8" [1345mm x 562mm]	---	4-1/4" x 15-3/4" x 11-3/8" [108mm x 400mm x 288mm]
400-HWILF/D4	52-15/16" x 22-1/8" [1345mm x 562mm]	54-7/8" x 24-1/8" [1394mm x 613mm]	4-1/4" x 15-3/4" x 11-3/8" [108mm x 400mm x 288mm]
400-HWILF/D6	52-15/16" x 22-1/8" [1345mm x 562mm]	54-7/8" x 24-1/8" [1394mm x 613mm]	4-1/4" x 15-3/4" x 11-3/8" [108mm x 400mm x 288mm]

\*Large flange wells only.

\*\*Allow 6" [152mm] clearance from control box to conduit bend.



**CHECK FIRST**

- Appliance must be installed level and must not be installed in any area where it may be directly affected by steam, grease, dripping water, high temperatures, or any other severely adverse conditions.
- Some foods may require additional overhead heating. Always monitor the food temperature and add overhead heating when needed.
- Countertop material must withstand temperatures up to 200°F [93°C].
- A stainless steel heat shield is recommended if the area under the appliance is used for storage.



**CLEARANCE**

1" [25 mm] from combustible surfaces



**ELECTRIC**

All models	V	Ph	Hz	A	kW	Cord & Plug
120V	120	1	50/60	20.0	2.4	NEMA L5-30p 30A-125V plug
208-240V	208	1	50/60	8.7	1.8	NEMA 6-15p 15A-250V plug
	240	1	50/60	10.0	2.4	CEE 7/7 plug rated 250V
230V	230	1	50/60	10.4	2.4	CH2-16p plug rated 250V
						BS 1363 plug rated 250V
						plug rated 250V

Cord length: 120V: 6 ft [1.8 m]; 208-240V: 9 ft [2.7 m]; 230V [CEE]: 9 ft [2.7 m]; 230V [CH, BS]: 8 ft [2.5 m]



**HEAT**

Heat of rejection		
400-HW	Heat Gain qs, BTU/hr	Heat Gain qs, kW
	243	0.07

## CONTACT US

W164 N9221 Water Street | Menomonee Falls, Wisconsin 53051 | U.S.A.  
Phone: 262.251.3800 | 800.558.8744 U.S.A./Canada | Fax: 262.251.7067 | [alto-shaam.com](http://alto-shaam.com)