



STAINLESS STEEL

# REGALINE CORNER SINKS



FEATURING A  
**TILE EDGE DESIGN**



Item #: \_\_\_\_\_ Qty #: \_\_\_\_\_

Model #: \_\_\_\_\_

Project #: \_\_\_\_\_



Includes Adjustable Side  
Cross-Bracing



Recessed Bowl Surface  
Accommodates Poly-Vance  
Cutting Boards & Sink Covers

**All units furnished with 2 integral drainboards**

## FEATURES:

Tile edge for ease of installation.

One piece **Deep Drawn** sink bowls with integral drainboards with splash.

Featuring the single bowl unit design.

All sink bowls have a large liberal 3" radius (10"x14" bowls have 2" Radius).

Corner sinks are supplied with adjustable side cross braces featuring leg clamps.

## CONSTRUCTION:

All TIG welded.

Welded areas blended to match adjacent surfaces and to a satin finish.

Gussets welded to a die-embossed reinforcing channel.

## MATERIAL:

Unit is 16 gauge, type "304" stainless steel.

Legs are 1 5/8" diameter heavy gauge tubular stainless steel with stainless steel gussets.

1" adjustable stainless steel bullet feet.

## MECHANICAL:

- Supply is 1/2" IPS hot & cold.
- Faucet holes on 8" centers.
- Faucets are not included (**see accessories**).
- Waste drains are 1 1/2" IPS S/S basket type, located in center of sink bowl, and are included.

**YES! It's SeaLess!**

MODEL #	# of Comp.	Wall Dimension	Optional Poly-Vance Cutting Board
94-K2-24D	3	71 1/2" x 71 1/2"	K-2E
94-K4-24D	3	79 1/2" x 79 1/2"	K-2F
94-K6-18D	3	61 1/2" x 61 1/2"	K-2E
94-K8-30D	3	85 1/2" x 85 1/2"	K-2E
94-K3-11D	3	54 1/2" x 54 1/2"	K-2H
94-K5-11D	3	42 1/2" x 42 1/2"	K-2H

ACCESSORIES	Model #	Qty
FAUCETS		

**All Units Require 2 Sets of Faucets**



**Customer Service Available To Assist You 1-800-645-3166 8:30 am - 7:00 pm E.S.T.**

For Orders & Customer Service:

Email: customer@advancetabco.com or Fax: 631-242-6900

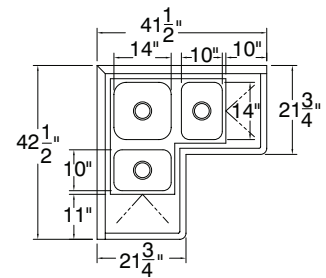
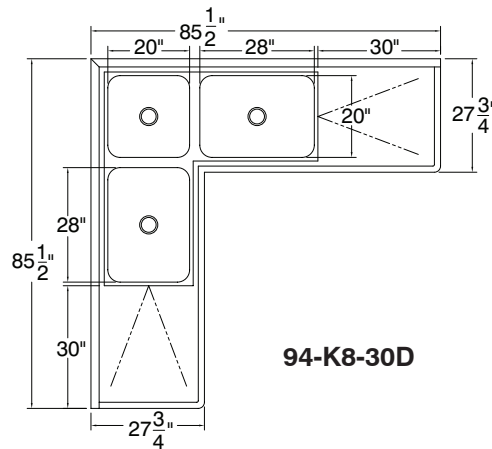
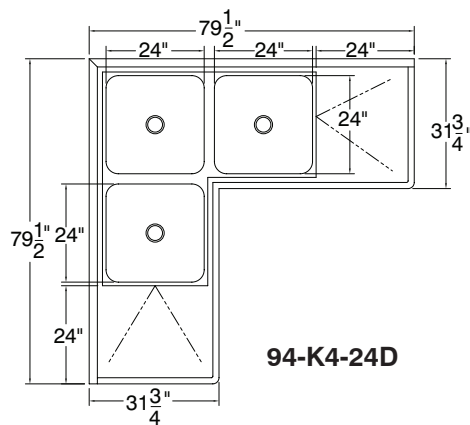
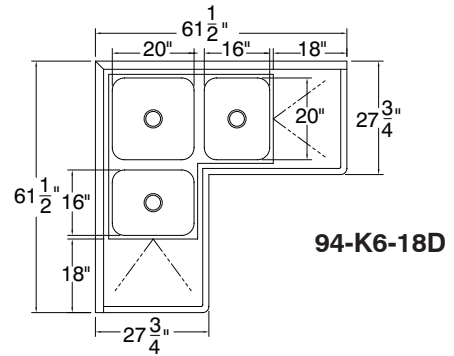
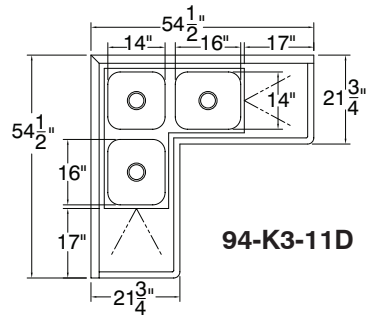
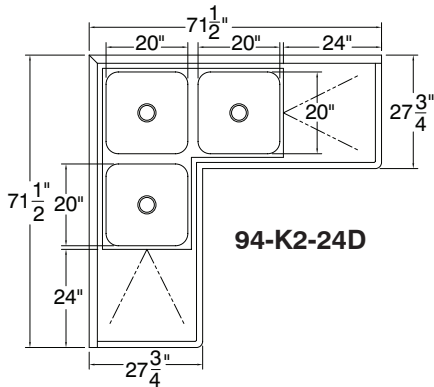
For Smart Fabrication™ Quotes:

Email: smartfab@advancetabco.com or Fax: 631-586-2933

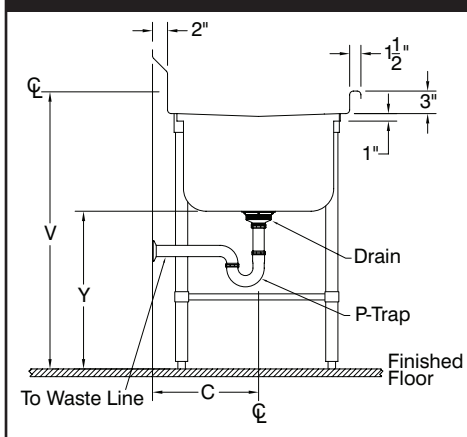
# DIMENSIONS and SPECIFICATIONS

TOL Overall:  $\pm .500''$   
Interior:  $\pm .250''$

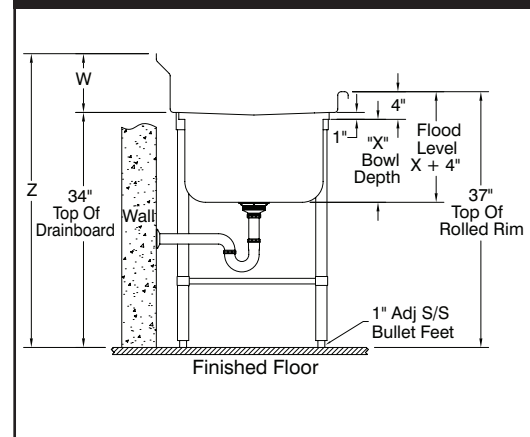
ALL DIMENSIONS ARE TYPICAL



## PLUMBING ROUGH-IN



## SECTION



Model #	A	B	C	D	E	V	W	X	Y	Z
94-K2-24D	15"	12"	27"	20"	13 5/8"	38"	8"	14"	22"	45"
94-K4-24D	15"	12"	31"	24"	15 5/8"	38"	8"	14"	22"	45"
94-K6-18D	15"	12"	27"	20"	13 5/8"	38"	8"	14"	22"	45"
94-K8-30D	15"	12"	27"	20"	13 5/8"	38"	8"	14"	22"	45"
94-K3-11D	15"	12"	21"	14"	10 5/8"	38"	8"	14"	22"	45"
94-K5-11D	13"	10"	21"	14"	10 5/8"	38"	8"	14"	24"	45"

