



STAINLESS STEEL
WORK TABLES

SPEC-LINE Series - 10" Backsplash - Undershelf Style



Item #: _____ Qty #: _____
 Model #: _____
 Project #: _____

FEATURES:

Top is furnished with a 2" x 1" square die embossed NO-DRIP countertop edge with a 1/2" return on 3 sides and a 10" splash of with a 2" return on the rear side.

24" wide tables supplied with TWO hat channels stud welded to reinforce and maintain a level working surface. 30" and 36" wide tables supplied with THREE hat channels.

Pre-engineered welded angle adapters insure ease of future drawer installation.

Aluminum die cast "leg-to-shelf" clamp secures shelf to leg eliminating unsightly nuts and bolts. Undershelf is adjustable.

CONSTRUCTION:

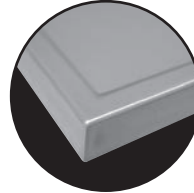
All TIG welded. Exposed weld areas polished to match adjacent surfaces.

Entire top mechanically polished to a satin finish. Countertop edge polished to a MIRROR finish.

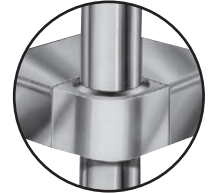
Top is sound deadened.

Roll formed embossed galvanized hat channels are secured to top by means of structural adhesive and weld studs.

Gussets welded to support hat sections.



No-Drip DIE FORMED EDGE offers the Ultimate in Design & Function.



Featuring as Standard: **"THE PROVEN"** ORIGINAL ADVANCE TABCO Adjustable Undershelf with Die Cast Leg Clamp

MATERIAL:

VKS-SERIES: Stainless Steel Legs & Undershelf

TOP: 14 gauge stainless steel type "304" series.

SHELF: 18 gauge stainless steel.

LEGS: 1 5/8" diameter tubular stainless steel type "304" series.
 1" adjustable stainless steel bullet feet.
 Stainless steel gussets.

VKG-SERIES: Galvanized Legs & Undershelf

TOP: 14 gauge stainless steel type "304" series.

SHELF: 18 gauge galvanized steel.

LEGS: 1 5/8" diameter tubular galvanized steel.
 1" adjustable plastic bullet feet.
 Galvanized steel gussets.

**VKS-Series:
Stainless Steel Legs & Undershelf**

L	24" Wide	30" Wide	36" Wide
30"	VKS-240	VKS-300	
24"	VKS-242	VKS-302	VKS-362
36"	VKS-243	VKS-303	VKS-363
48"	VKS-244	VKS-304	VKS-364
60"	VKS-245	VKS-305	VKS-365
72"	VKS-246	VKS-306	VKS-366
84"	VKS-247	VKS-307	VKS-367
*96"	VKS-248	VKS-308	VKS-368
*108"	VKS-249	VKS-309	VKS-369
*120"	VKS-2410	VKS-3010	VKS-3610
*132"	VKS-2411	VKS-3011	VKS-3611
*144"	VKS-2412	VKS-3012	VKS-3612

**VKG-Series:
Galvanized Steel Legs & Undershelf**

L	24" Wide	30" Wide	36" Wide
30"	VKG-240	VKG-300	
24"	VKG-242	VKG-302	VKG-362
36"	VKG-243	VKG-303	VKG-363
48"	VKG-244	VKG-304	VKG-364
60"	VKG-245	VKG-305	VKG-365
72"	VKG-246	VKG-306	VKG-366
84"	VKG-247	VKG-307	VKG-367
*96"	VKG-248	VKG-308	VKG-368
*108"	VKG-249	VKG-309	VKG-369
*120"	VKG-2410	VKG-3010	VKG-3610
*132"	VKG-2411	VKG-3011	VKG-3611
*144"	VKG-2412	VKG-3012	VKG-3612



*Units 8 ft. and larger are furnished with six (6) legs

Create Your Own Efficient Workstation with the Available Standard Accessories (Visit Section K)



Customer Service Available To Assist You 1-800-645-3166 8:30 am - 7:00 pm E.S.T.

For Orders & Customer Service:

Email: customer@advancetabco.com or Fax: 631-242-6900

For Smart Fabrication™ Quotes:

Email: smartfab@advancetabco.com or Fax: 631-586-2933

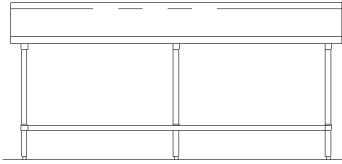
DETAILS and SPECIFICATIONS

ALL DIMENSIONS ARE TYPICAL TOL ± .500"

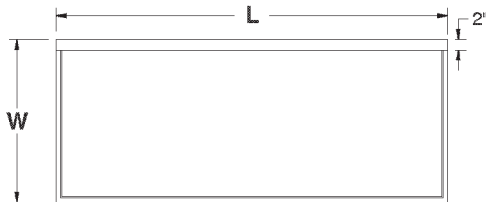
All Units Shipped Unassembled (KD) for Reduced Shipping Costs.

VKS & VKG Series Undershelf Style 10" Backsplash

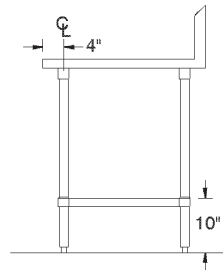
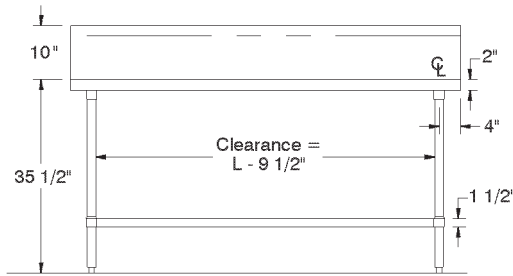
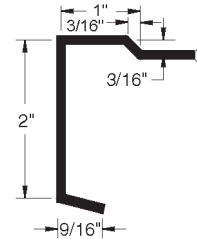
Finished size of undershelf = Length minus 5 3/4"
Width minus 5 3/4"



Units 8 ft. and larger are furnished with six (6) legs



COUNTERTOP EDGE DETAIL



VKS-Series: Stainless Steel Legs & Undershelf

L	24" Wide	Wt.	30" Wide	Wt.	36" Wide	Wt.
30"	VKS-240	55 lbs.	VKS-300	70 lbs.		
24"	VKS-242	50 lbs.	VKS-302	56 lbs.	VKS-362	86 lbs.
36"	VKS-243	66 lbs.	VKS-303	77 lbs.	VKS-363	92 lbs.
48"	VKS-244	81 lbs.	VKS-304	92 lbs.	VKS-364	101 lbs.
60"	VKS-245	95 lbs.	VKS-305	111 lbs.	VKS-365	121 lbs.
72"	VKS-246	113 lbs.	VKS-306	129 lbs.	VKS-366	142 lbs.
84"	VKS-247	135 lbs.	VKS-307	153 lbs.	VKS-367	169 lbs.
96"	VKS-248	150 lbs.	VKS-308	171 lbs.	VKS-368	189 lbs.
108"	VKS-249	165 lbs.	VKS-309	289 lbs.	VKS-369	260 lbs.
120"	VKS-2410	268 lbs.	VKS-3010	294 lbs.	VKS-3610	315 lbs.
132"	VKS-2411	301 lbs.	VKS-3011	331 lbs.	VKS-3611	358 lbs.
144"	VKS-2412	316 lbs.	VKS-3012	346 lbs.	VKS-3612	373 lbs.

VKG-Series: Galvanized Steel Legs & Undershelf

L	24" Wide	Wt.	30" Wide	Wt.	36" Wide	Wt.
30"	VKG-240	55 lbs.	VKG-300	70 lbs.		
24"	VKG-242	50 lbs.	VKG-302	56 lbs.	VKG-362	86 lbs.
36"	VKG-243	66 lbs.	VKG-303	77 lbs.	VKG-363	92 lbs.
48"	VKG-244	81 lbs.	VKG-304	92 lbs.	VKG-364	101 lbs.
60"	VKG-245	95 lbs.	VKG-305	111 lbs.	VKG-365	121 lbs.
72"	VKG-246	113 lbs.	VKG-306	129 lbs.	VKG-366	142 lbs.
84"	VKG-247	135 lbs.	VKG-307	153 lbs.	VKG-367	169 lbs.
96"	VKG-248	150 lbs.	VKG-308	171 lbs.	VKG-368	189 lbs.
108"	VKG-249	165 lbs.	VKG-309	195 lbs.	VKG-369	260 lbs.
120"	VKG-2410	268 lbs.	VKG-3010	294 lbs.	VKG-3610	315 lbs.
132"	VKG-2411	301 lbs.	VKG-3011	331 lbs.	VKG-3611	358 lbs.
144"	VKG-2412	316 lbs.	VKG-3012	346 lbs.	VKG-3612	373 lbs.

