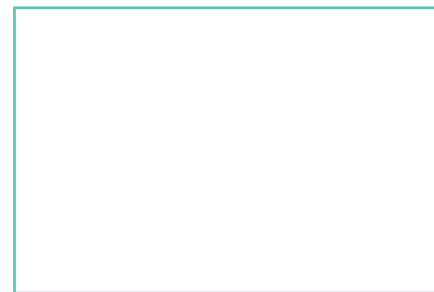




48" x 32" HPL Compact Top



Length: 48"
Width: 32"
Weight: -

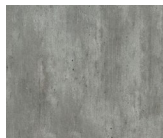
Product Specifications

Product Description	Reference Number	Color	UPC Code 014306	Weight Each (lbs.)	Master Pack	Master Pack Volume (cu. ft)
48" x 32" HPL Compact Top	UT330038	Granite	930190	38.85	1	1.84
	US48H325	Vintage Pine	930213	38.85	1	1.84
	US48H727	Slate	930206	38.85	1	1.84
	US48H790	Kandia Gr. Marble	934495	38.85	1	1.84
	US48H722	Walnut	934532	38.85	1	1.84
	UT330727	Gray Slate	936567	38.85	1	1.84
	UT330245	Drifted Pine	936574	38.85	1	1.84

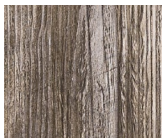
Features & Benefits Warranty: 2 Yrs.

- Durable and impact resistant
- Water resistant – even when chipped!
- Easy to clean with soap and water – ideal for the foodservice environment
- Strong – the density of HPL is similar to the density of concrete

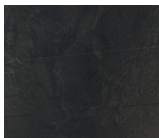
Grosfillex HPL Compact tabletops are perfect for fine dining, indoors or out! They provide the ultimate in strength and beauty along with their easy-to-clean finishes. They are available in attractive decors that feature a realistic “touch” effect. They are fitted with rails for easy installation on our bases, and pair beautifully with our X-One tilting table bases. Now introducing two new colors - Gray Slate and Drifted Pine!



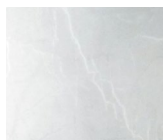
Granite



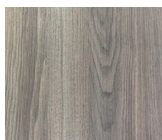
Vintage Pine



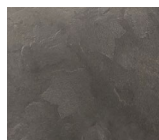
Slate



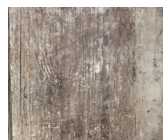
Kandia Gray
Marble



Walnut



Gray Slate



Drifted Pine



No Spare Parts